

**KINGDOM OF CAMBODIA**

**Nation Religion King**



**Forestry Administration**

**Community Forestry Statistic  
in Cambodia 2013**

**June 2013**

## Fore more Information, please contact address below:

Forestry Administration

**Department of Forest and Community Forestry**

Appartment # 40, Preah Norodom Blvd., Daun Penh, Phnom Penh

CAMBODIA

Email: [cf.statistic@gmail.com](mailto:cf.statistic@gmail.com)

Website: [forestry.gov.kh](http://forestry.gov.kh)

**This publication has been made possible through the support by:**





## PREFACE

Forest resources have been benefiting our national society to a great extent. Forest is not only beneficial economically; it contains such indispensable characteristics as maintaining natural environment, improving climate, making the air fresh, maintaining regularity of water source, protecting slopes and biodiversity, contributing to the reduction of green house gas emission into the atmosphere and helping support the livelihoods of millions of people who rely on forest products and non timber forest products. Therefore, all people are obliged to maintain the sources that support their lives through contributing to maintaining, protecting, conserving and developing forest in an effective and sustainable manner to serve human beings of current and next generations.

Due to the great benefits of the forest, the Forestry Administration of the Ministry of Agriculture, Forestry and Fisheries has been implementing forestry reform program as stated in the royal government rectangular strategy, which, under the uppermost correct and wise leadership and wisdom of **Samdech Akak Moha Sena Padei Techo HUN SEN**, Prime Minister of the Kingdom of Cambodia, considers community forestry as the priority for forestry management.

The Forestry Administration is pleased to present community forestry data in Cambodia through “Cambodian Community Forestry Statistics 2013” for the preparation of community forestry development program and plan of action as well as development, conservation, research, utilization of non timber forest products and other services.

The Forestry Administration is extremely honored and appreciative to the Royal Danish Embassy and Danish Agency for International Development in Cambodia and development partners, national and international non-governmental organizations, relevant stakeholders, local authority at all levels and local community contributed to supporting the successful community forestry development process in Cambodia.

**CHHENG Kimsun**

**Delegate of the Royal Government**

**In Charge of Forestry Administration**



## CONTENT

	Page
1. Introduction	1
2. Community Forestry Statistics	1
2.1. The Community Forestry in Kep province	4
2.2. The Community Forestry in Koh Kong province	4
2.3. The Community Forestry in Kratie province	5
2.4. The Community Forestry in Kampong Cham province	7
2.5. The Community Forestry in Kampong Chhnang province	8
2.6. The Community Forestry in Kampong Thom province	10
2.7. The Community Forestry in Kampong Speu province	12
2.8. The Community Forestry in Kampot province	14
2.9. The Community Forestry in Takeo province	15
2.10. The Community Forestry in Banteay Meanchey province	16
2.11. The Community Forestry in Battambang province	17
2.12. The Community Forestry in Pailin province	18
2.13. The Community Forestry in Pursat province	19
2.14. The Community Forestry in Preah Vihear province	21
2.15. The Community Forestry in Preah Sihanouk	22
2.16. The Community Forestry in Mondul Kiri province	23
2.17. The Community Forestry in Ratanak Kiri province	24
2.18. The Community Forestry in Siem Reap province	26
2.19. The Community Forestry in Stung Treng province	27
2.20. The Community Forestry in Svay Rieng province	28
2.21. The Community Forestry in Oddar Meanchey province	29



## FIGURES

	<b>Page</b>
Figure 1. The Community Forest Area by Province, June 2013	3
Figure 2. The Map of Community Forest in Cambodia, June 2013	3
Figure 3. The Map of Community Forest in Kep Province, June 2013	4
Figure 4. The Map of Community Forest in Koh Kong Province, June 2013	5
Figure 5. The Map of Community Forest in Kratie Province, June 2013	7
Figure 6. The Map of Community Forest in Kampong Cham Province, June 2013	8
Figure 7. The Map of Community Forest in Kampong Chhnang Province, June 2013	9
Figure 8. The Map of Community Forest in Kampong Thom Province, June 2013	12
Figure 9. The Map of Community Forest in Kampong Speu Province, June 2013	13
Figure 10. The Map of Community Forest in Kampot Province, June 2013	15
Figure 11. The Map of Community Forest in Takeo Province, June 2013	16
Figure 12. The Map of Community Forest in Banteay Meanchey Province, June 2013	17
Figure 13. The Map of Community Forest in Battambang Province, June 2013	18
Figure 14. The Map of Community Forest in Pailin Province, June 2013	19
Figure 15. The Map of Community Forest in Pursat Province, June 2013	21
Figure 16. The Map of Community Forest in Preah Vihear Province, June 2013	22
Figure 17. The Map of Community Forest in Preah Sihanouk Province, June 2013	23
Figure 18. The Map of Community Forest in Mondulkiri Province, June 2013	24
Figure 19. The Map of Community Forest in Ratanakiri Province, June 2013	25
Figure 20. The Map of Community Forest in Siem Reap Province, June 2013	27
Figure 21. The Map of Community Forest in Stung Treng Province, June 2013	28
Figure 22. The Map of Community Forest in Svay Rieng Province, June 2013	29
Figure 23. The Map of Community Forest in Oddar Meanchey Province, June 2013	30



## TABLES

	<b>Page</b>
Table 1. The Existing Community Forestry Statistics in Cambodia, June 2013	2
Table 2. The CF Statistics Approved by MAFF and Signed CF Agreements	2
Table 3. The CF Statistics in Kep province, June 2013	4
Table 4. The CF Statistics in Koh Kong province, June 2013	5
Table 5. The CF Statistics in Kratie province, June 2013	6
Table 6. The CF Statistics in Kampong Cham province, June 2013	7
Table 7. The CF Statistics in Kampong Chhnang province, June 2013	8
Table 8. The CF Statistics in Kampong Thom province, June 2013	10
Table 9. The CF Statistics in Kampong Speu province, June 2013	12
Table 10. The CF Statistics in Kampot province, June 2013	14
Table 11. The CF Statistics in Takeo province, June 2013	15
Table 12. The CF Statistics in Banteay Meanchey province, June 2013	16
Table 13. The CF Statistics in Battambang province, June 2013	17
Table 14. The CF Statistics in Pailin province, June 2013	18
Table 15. The CF Statistics in Pursat province, June 2013	19
Table 16. The CF Statistics in Preah Vihear province, June 2013	21
Table 17. The CF Statistics in Preah Sihanouk, June 2013	22
Table 18. The CF Statistics in Mondul Kiri province, June 2013	23
Table 19. The CF Statistics in Ratanak Kiri province, June 2013	24
Table 20. The CF Statistics in Siem Reap province, June 2013	26
Table 21. The CF Statistics in Stung Treng province, June 2013	27
Table 22. The CF Statistics in Svay Rieng province, June 2013	28
Table 23. The CF Statistics in Oddar Meanchey province, June 2013	29



## 1. INTRODUCTION

Community-based forest management was initiated since mid 1990s and it is currently very impressive and strongly supported by relevant stakeholders, national and international non-organizations, development partners, especially the Royal Government of Cambodia, as it has developed clear policies and various regulations as the basis to promote community forestry development, aiming at ensuring the sustainability of forest resources and utilization of those resources to enhance the living standards of rural populations and taking part in boosting economic growth and addressing the issues of climate change and global warming.

The law on forest has been adopted by the national assembly and promulgated by the Royal Kram No. ៩៥៤/រ៉័ម/០៨០២/០១៦ dated 31 August 2002. The adoption of the Sub-Decree on Community Forestry (CF) Management dated 02 December 2003, Prakas (Proclamation) on Community Forestry Guidelines dated 21 July 2006 of the Ministry of Agriculture, Forestry and Fisheries is an important turning point which shifts from informal community-based forest management to a formal one to prepare for decentralized community-based forest management in which local community take part in the management, conservation and development of forest in a sustainable manner through equitable benefit sharing and improving living condition, contributing to current and future of poverty of the people of next generation, especially that of rural population. The National Forest Program (NFP) was adopted by the Royal Government of Cambodia on 18 October 2010. The NFP will render an appropriate and transparent mechanism to determine strategic goals, develop action plan and assess all forest activities in the priority areas and harmonize with other sectors to develop national economy. Operational project of the NFP is for 30 years (2010-2029) contains 6 programs, each of which contains 2 to 9 sub-programs.

Community Forestry Program (CFP) came fourth amongst the six programs of the NFP. The CFP contains three sub-programs which include:

- (1)- Determination of potential areas and establishment of community forestry
- (2)- Community development and livelihood improvement and
- (3)- Service delivery to community forestry development.

## 2. COMMUNITY FORESTRY STATISTIC

Rectangular strategy phase 2 considers community forestry as the priority for forest management which contributes to poverty reduction, maintaining forest sustainability and enhancing more extensive practice of community forestry. Furthermore, a number of community forestry related indicators have been stated in the community forestry program for long term follow-up of the implementation of national forest program by 2029 “Two million hectares of forest have been determined as community forestry.”

With the supports of national and international non-organizations, development partners, relevant stakeholders, civil society, local community and local authority at all levels, the Forestry Administration has been proposing to the Ministry of Agriculture, Forestry and Fisheries to adopt the Prakas (Proclamation) on the establishment and management of community forestry areas. As a result, currently there are 457 CF sites were established covering 400,167.02 hectares of forest area which located in 21 provinces. Inside these, the Ministry of Agriculture, Forestry and Fisheries has approved 345 community forestry sites covering 308,563.02 hectares of forest area located in 21 provinces and 253 community forestry sites covering 207,298.61 hectares of forest area located in 20 provinces were signed community forestry agreement between respective Forestry Administration Cantonment (FAC) and the Community Forestry Management Committee (CFMC).

**Table 1: The Existing Community Forestry Statistic in Cambodia, June 2013**

No.	Provinces	No. of CF	CF Areas (Ha.)	No. of Village	No. of Commune	No. of District	Family Member
1	Kep	3	1,009.00	4	2	2	1,048
2	Kohkong	13	17,514.41	19	8	4	451
3	Kratie	41	59,042.00	51	17	7	10,844
4	Kampong Cham	11	3,521.00	11	3	2	2,027
5	Kampong Chhnang	33	10,909.70	61	15	5	10,529
6	Kampong Thom	82	80,907.91	111	27	7	13,107
7	Kampong Speu	25	13,779.00	76	18	5	6,504
8	Kampot	27	12,530.00	63	18	7	15,806
9	Takeo	13	10,791.00	106	14	2	12,601
10	Banteay Meanchey	12	4,970.00	26	9	4	3,850
11	Battambang	17	5,415.00	25	8	7	2,551
12	Pailin	4	858.00	12	4	2	1,024
13	Pursat	56	7,286.00	56	17	6	7,428
14	Preah Vihear	21	45,344.00	28	11	4	2,809
15	Preah Sihanouk	2	1,274.00	3	2	1	492
16	Mundulkiri	4	4,176.00	4	2	2	315
17	Ratanakiri	32	20,838.00	50	17	7	4,400
18	Siem Reap	37	18,122.00	62	23	12	9,599
19	Stung Treng	8	16,208.00	20	6	3	2,092
20	Svay Rieng	2	504.00	6	2	2	961
21	Oddar Meanchey	14	65,168.00	60	9	4	5,091
	<b>TOTAL</b>	<b>457</b>	<b>400,167.02</b>	<b>854</b>	<b>232</b>	<b>95</b>	<b>113,529</b>

**Table 2: The CF Statistic Approved by MAFF and Signed CF Agreement**

No.	Provinces	Approved by MAFF		Signed CF Agreement	
		No. of CF	CF Area (Ha.)	No. of CF	CF Area (Ha.)
1	Kep	3	1,009.00	1	60.00
2	Kohkong	13	17,514.41	1	3,046.00
3	Kratie	19	29,397.00	10	17,351.00
4	Kampong Cham	6	1,824.00	5	1,783.00
5	Kampong Chhnang	15	6,714.70	15	6,714.70
6	Kampong Thom	64	53,902.91	57	48,478.91
7	Kampong Speu	18	8,280.00	15	5,877.00
8	Kampot	21	8,703.00	11	5,720.00
9	Takeo	13	10,791.00	4	1,843.00
10	Banteay Meanchey	12	4,970.00	12	4,970.00
11	Battambang	13	3,531.00	13	3,531.00
12	Pailin	4	858.00	4	858.00
13	Pursat	40	2,841.00	35	2,504.00
14	Preah Vihear	18	37,063.00	8	19,347.00
15	Preah Sihanouk	2	1,274.00	1	592.00
16	Mundulkiri	4	4,176.00	0	0
17	Ratanakiri	19	15,712.00	9	908.00
18	Siem Reap	37	18,122.00	35	17,523.00
19	Stung Treng	8	16,208.00	2	1,370.00
20	Svay Rieng	2	504.00	2	504.00
21	Oddar Meanchey	14	65,168.00	13	64,318.00
	<b>TOTAL</b>	<b>345</b>	<b>308,563.02</b>	<b>253</b>	<b>207,298.61</b>

**Note:** CF : Community Forestry; MAFF : Ministry of Agriculture, Forestry and Fisheries;

Ha. : Hectar



Figure 1: The Community Forest Area by Provinces, June 2013

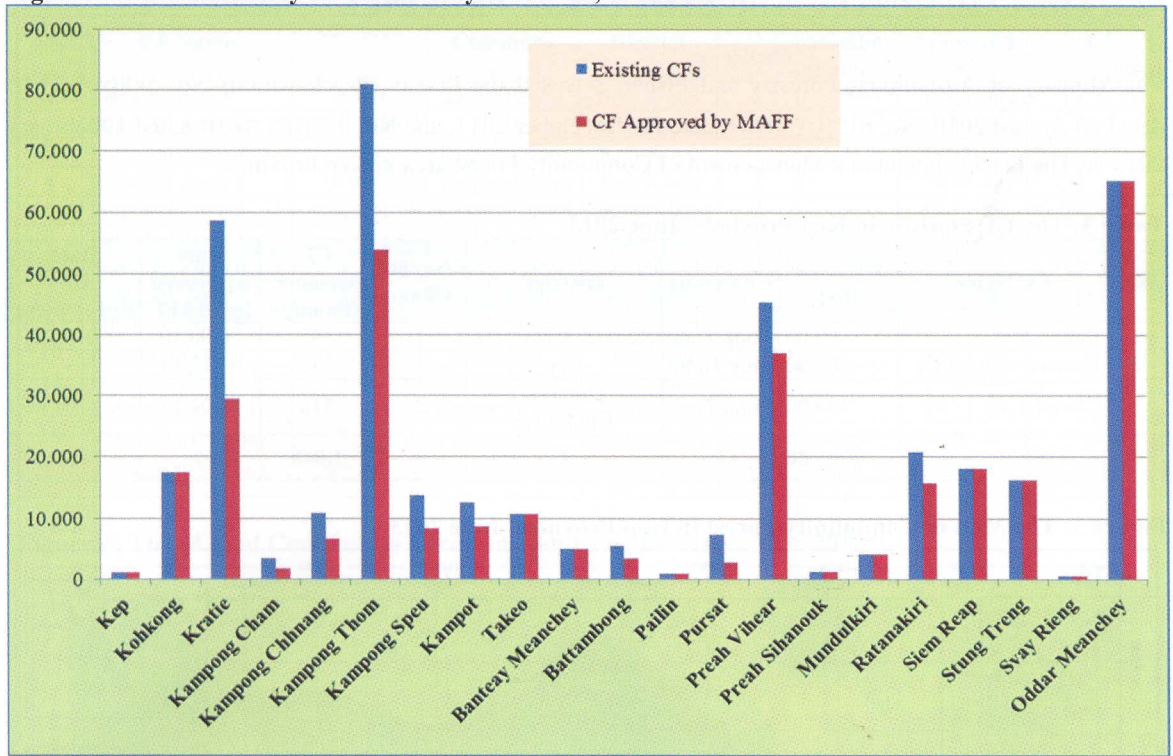
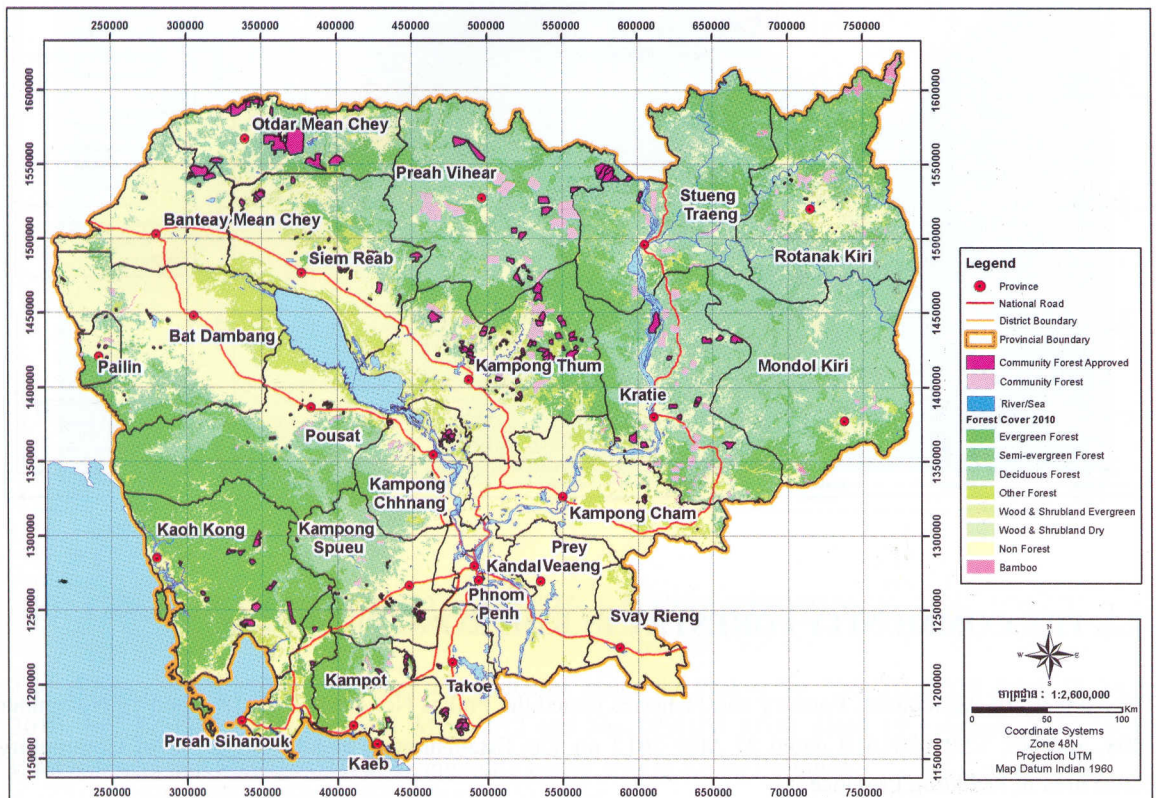


Figure 2: The Map of Community Forest in Cambodia, June 2013



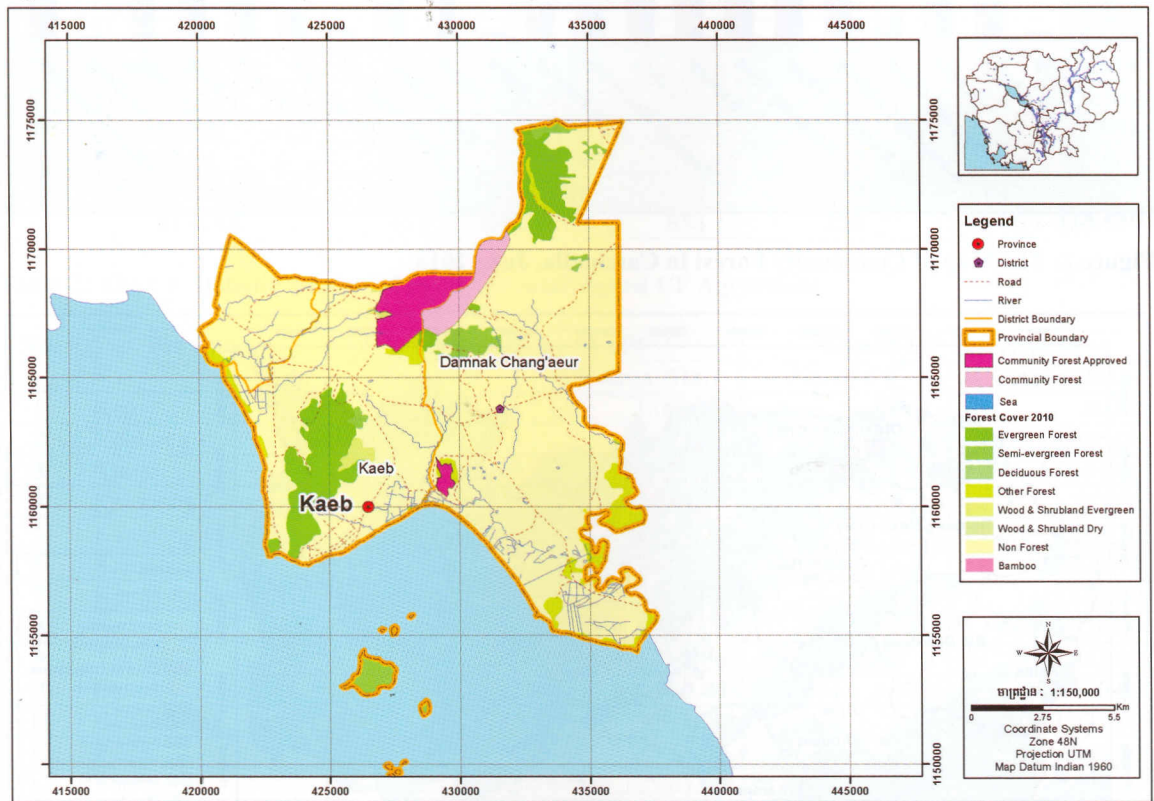
## 2.1. THE COMMUNITY FORESTRY IN KEP PROVINCE

The Ministry of Agriculture, Forestry and Fisheries issued the Prakas (Proclamation) No. 548ប្រកាសកំណត់ dated 20 August 2010, No. 612ប្រកាសកំណត់ dated 05December 2011, and No. 072ប្រកាសកំណត់ dated 19February 2013 on The Establishment and Management of Community Forest area in Kep Province.

**Table 3: The CF Statistic in Kep Province, June 2013**

No.	CF Name	CF Area (ha)	Commune	District	No. of village	CF Member (Family)	Date Approved by MAFF	Date CF Agreement
1	Phnom Poun	60.00	Pong Toek	Domnak Chong Ae	1	345	20.08.10	17.12.10
2	Domnak Chong Ea	583.00	Prey Thom	Kep	1	385	05.12.11	
3	Chomka 3	366.00	Pong Toek	Domnak Chong Ae	2	318	19.02.13	
<b>Total</b>		<b>1,009.00</b>	<b>2</b>	<b>2</b>	<b>4</b>	<b>1,048</b>	<b>3</b>	<b>1</b>

**Figure 3: The Map of Community Forest in Kep Province, June 2013**



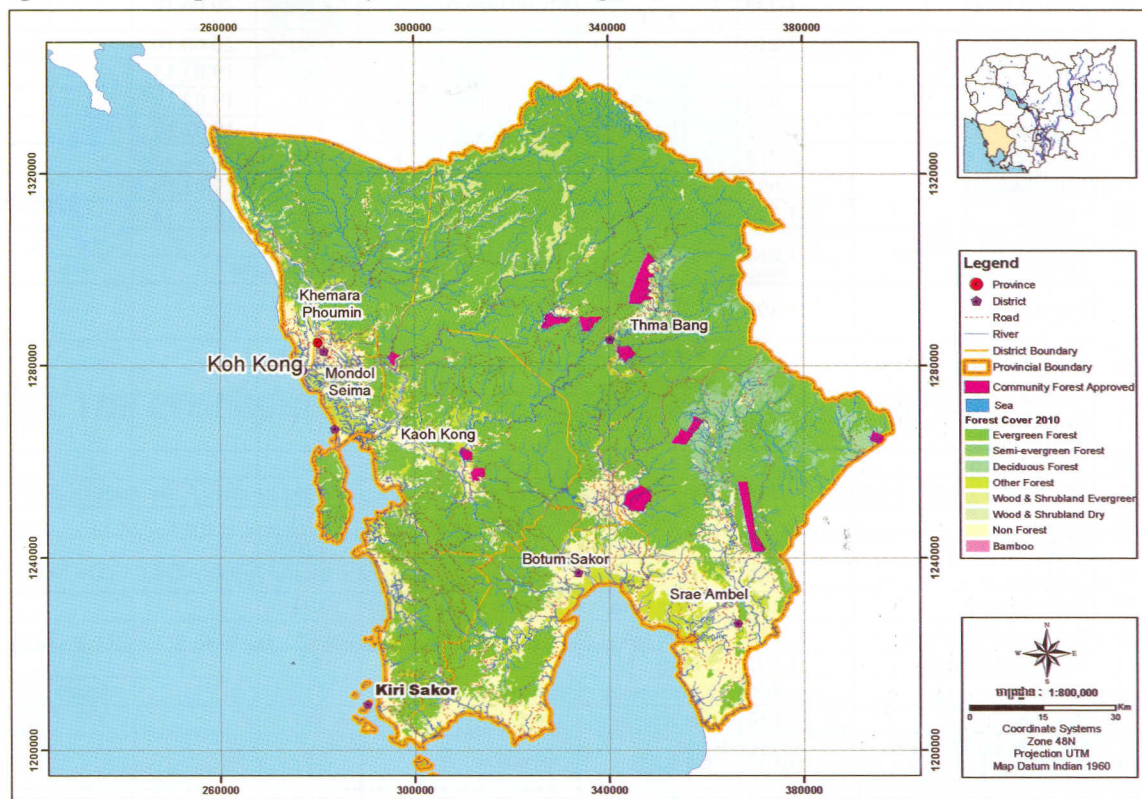
## 2.2. THE COMMUNITY FORESTRY IN KOH KONG PROVINCE

The Ministry of Agriculture, Forestry and Fisheries issued the Prakas No. 486ប្រកាសកំណត់ dated 19 November 2008, and No. 322ប្រកាសកំណត់ dated 21 May 2012 on The Establishment and Management of Community Forest area in Kohkong Province.

**Table 4: The CF Statistic in Koh Kong Province, June 2013**

No.	CF Name	CF Area (ha)	Commune	District	No. of village	CF Member (Family)	Date Approved by MAFF	Date CF Agreement
1	Tob Cheang	3,046.00	Dong Peang	Sre Ombel	2	264	19.11.08	13.12.10
2	Potential Zone 1	384.02	Tatai	Koh Kong	1		19.11.08	
3	Potential Zone 2	535.46	Tropeng Rong	Koh Kong	1		19.11.08	
4	Potential Zone 3	605.39	TropengRong	Koh Kong	1		19.11.08	
5	Potential Zone 4	1,081.70	RusseyChrom	Thmor Bang	2		19.11.08	
6	Potential Zone 5	911.48	Chomnob	Thmor Bang	1		19.11.08	
7	Potential Zone 6	1,164.49	Dong Peang	Sre Ombel	2		19.11.08	
8	Potential Zone 7	1,694.41	Dong Peang	Srer Ombel	2		19.11.08	
9	Potential Zone 8	877.53	Dong Peang	Sre Ombel	1		19.11.08	
10	Potential Zone 9	2,191.69	Chi Kor	Sre Ombel	2		19.11.08	
11	Potential Zone 10	1,480.86	Dong Peang	Srer Ombel	2		19.11.08	
12	Potential Zone 11	528.38	Kampong Sela	Srer Ombel	1		19.11.08	
13	Sovanabaiy Torng	3,013.00	Kandal	Batumsakour	1	187	21.05.12	
<b>Total</b>		<b>17,514.41</b>	<b>8</b>	<b>4</b>	<b>19</b>	<b>451</b>	<b>13</b>	<b>1</b>

**Figure 4: The Map of Community Forest in Koh Kong Province, June 2013**



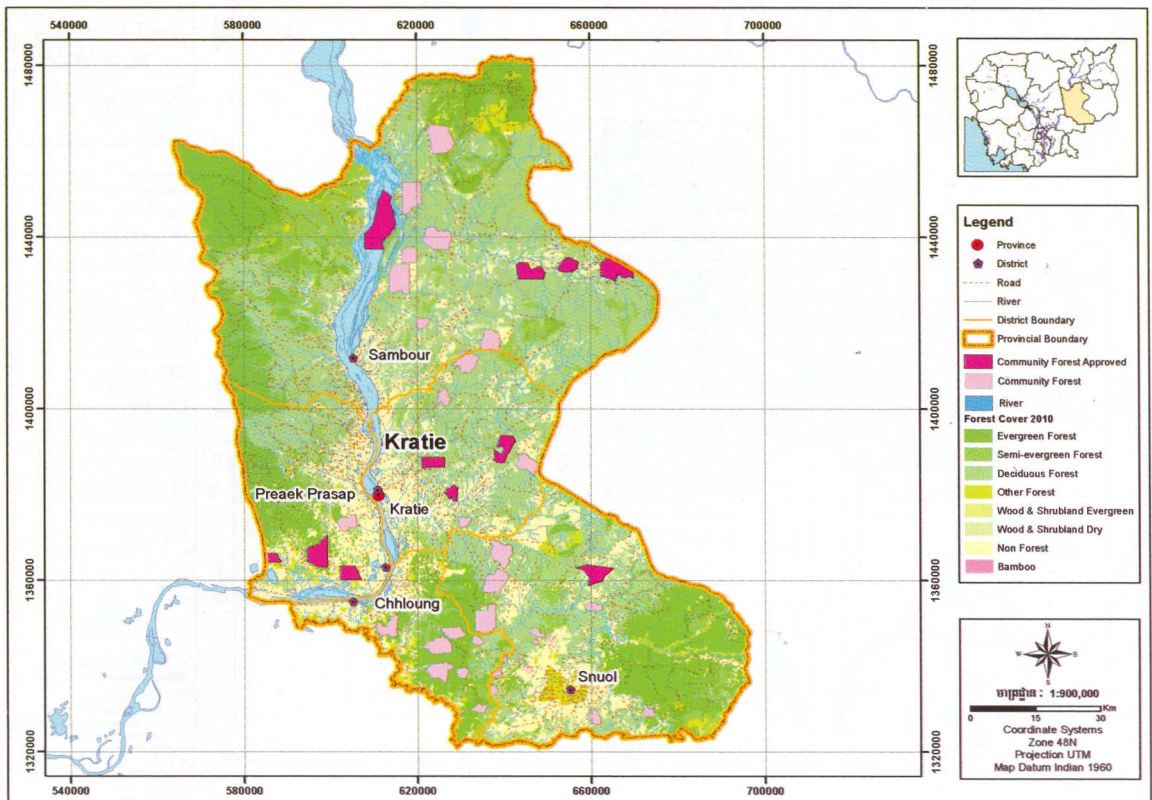
### 2.3. THE COMMUNITY FORESTRY IN KRATIE PROVINCE

The Ministry of Agriculture, Forestry and Fisheries issued the Prakas No. 556ប្រកាសក្រសួងកសិកម្ម រុក្ខាប្រមាញ់ និងនេសាទ dated 20 August 2010, No. 323ប្រកាសក្រសួងកសិកម្ម រុក្ខាប្រមាញ់ និងនេសាទ dated 21 May 2012 and No. 079ប្រកាសក្រសួងកសិកម្ម រុក្ខាប្រមាញ់ និងនេសាទ dated 19 February 2013 on The Establishment and Management of Community Forest area in Kratie Province.

**Table 5: The CF Statistic in Kratie Province, June 2013**

No.	CF Name	CF Area (ha)	Commune	District	No. of village	CF Member (Family)	Date Approved by MAFF	Date CF Agreement
1	Tichhumreal Lomhelkomsan	122	Chom Bork	Preak Brosop	2	149	21.05.12	28.12.12
2	Outannoeng	613	Kbal Domrey	Sombor	1	92	21.05.12	28.12.12
3	Sre Roneam	2,021	Khsoem	Snoul	1	199	20.08.10	09.12.11
4	Steung Thom	638	Chom Bork	Preak Brosob	1	228	20.08.10	09.12.11
5	Sre Chis	2,730	Sre Chis	Sombor	4	138	20.08.10	09.12.11
6	Roluos	1,163	Roluos Meanchey	Sombor	1	315	20.08.10	09.12.11
7	Pha klae	1,940	Roluos Meanchey	Sombor	1	182	20.08.10	09.12.11
8	boengcha	5,584	Boeng Cha	Sombor	1	512	20.08.10	09.12.11
9	Kontout	716	Kontout	Chet Borey	1	121	20.08.10	09.12.11
10	Phnom Meas	1,824	Thmey	Chet Borey	1	159	20.08.10	09.12.11
11	Stoeng Tror	2,392	Ta mao	Prek Brosob	1	329	20.08.10	
12	Phnom Louk	1,334	Kampong Kor	PreakBrosob	1	1,321	20.08.10	
13	Chrova	1,216	Kuoleap	Kratie	1	306	20.08.10	
14	Antongvien	692	Kontout	Chet Borey	1	183	19.02.13	
15	Tava	982	Thmey	Chet Borey	1	74	19.02.13	
16	Chamroeun	825	Thmey	Chet Borey	3	122	19.02.13	
17	Ou Kreang	2,713	Ou Kreang	Sombor	1	361	19.02.13	
18	Chronoul	692	Thmey	Chet Borey	1	131	19.02.13	
19	Ou kok	1,200	Ou Kreang	Sombor	1	28	19.02.13	
20	Domborn 2 Khum Domrey Phung	1,017	Domrey Pung	Chhloung	1	341		
21	Pruma	393	Kampong domrey	Chhloung	1	140		
22	Veal Kanseng	1,022	Kampong domrey	Chhloung	1	153		
23	Roleak	541	Kampong domrey	Chhloung	1	135		
24	Sre Nornkrov	367	Kontout	Kratie	1	124		
25	Sre Norn	843	Svay Chhrus	Snoul	2	446		
26	Treab	1,587	Thmey	Kratie	1	310		
27	Prek Broloung	574	Saop	PreakBrosob	1	129		
28	Angkor Ent	1,307	Beng Cha	Sombor	1	153		
29	Koh Entchey	1,380	Beng Cha	Sombor	1	104		
30	Kampong Kboeung	981	Beng Cha	Sombor	1	79		
31	Kampong Domrey	1,302	Beng Cha	Sombor	1	62		
32	Sompung	406	Koh Khmer	Sombor	2	280		
33	Punchea	2,132	Ou Kreang	Sombor	1	89		
34	Prey Choeru Daiy Ku Khum Ou Kreang	3,163	Ou Kreang	Sombor	1	433		
35	Phnom Bak	7,204	Ou Kreang	Sombor	1	133		
36	Thmor Tonlea	2,228	Ou Kreang	Sombor	1	49		
37	Phtol	634	Khsem	Snoul	1	128		
38	Tungtek	161	Srer Cha	Snoul	1	99		
39	8 Phum (Svaychis)	979	Svay Chhrus	Snoul	2	1,905		
40	Romeas Pon MaChul	543	Kontout	Chet Borey	1	235		
41	Phnom Krung	881	Thmey	Chet Borey	2	367		
<b>Total</b>		<b>59,042</b>	<b>17</b>	<b>7</b>	<b>51</b>	<b>10,844</b>	<b>19</b>	<b>10</b>

Figure 5: The Map of Community Forest in Kratie Province, June 2013



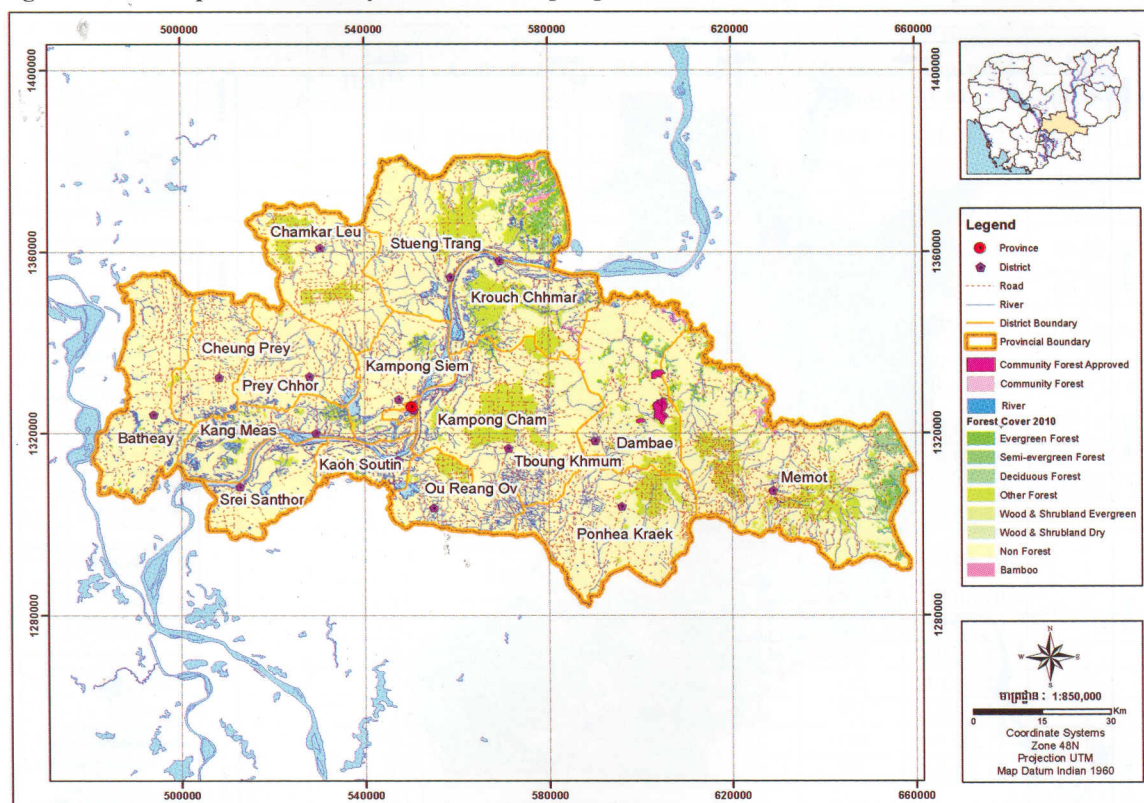
## 2.4. THE COMMUNITY FORESTRY IN KAMPONG CHAM PROVINCE

The Ministry of Agriculture, Forestry and Fisheries issued the Prakas No. 554្រ្រកិ.កសក dated 20 August 2010, and No. 320្រ្រកិ.កសក dated 21 May 2012 on The Establishment and Management of Community Forest area in Kampong Cham Province.

Table 6: The CF Statistic in Kampong Cham Province, June 2013

No.	CF Name	CF Area (ha)	Commune	District	No. of village	CF Member (Family)	Date Approved by MAFF	Date CF Agreement
1	Tropeng Preng	390	Tropeng Preng	Dom Bae	1	281	20.08.10	08.12.11
2	Chom Bork	216	Tropeng Preng	Dom Bae	1	91	20.08.10	08.12.11
3	Sre Kork	287	Tropeng Preng	Dom Bae	1	354	20.08.10	08.12.11
4	Veal Andaek	141	Kuk Srok	Dom Bae	1	143	20.08.10	08.12.11
5	Banghous Kleng	749	Tropeng Preng	Dom Bae	1	548	20.08.10	08.12.11
6	Phum Robongchus	41	Chorm Krovean	Mea Mut	1	98	21.05.12	
7	Sre Brang	402	Tropeng Preng	Dom Bae	1	140		
8	Kompraes	354	Tropeng Preng	Dom Bae	1	172		
9	Bousnour	167	Tropeng Preng	Dom Bae	1	66		
10	BroLou	318	Tropeng Preng	Dom Bae	1	71		
11	Toul Sombor	456	Tropeng Preng	Dom Bae	1	63		
<b>Total</b>		<b>3,521</b>	<b>2</b>	<b>2</b>	<b>11</b>	<b>2,027</b>	<b>6</b>	<b>5</b>

Figure 6. The Map of Community Forest in Kampong Cham Province, June 2013



## 2.5. THE COMMUNITY FORESTRY IN KAMPONG CHHNANG PROVINCE

The Ministry of Agriculture, Forestry and Fisheries issued the Prakas No. 485ប្រក.កំសក dated 18 November 2008, and No. 553ប្រក.កំសក dated 20 August 2010 on The Establishment and Management of Community Forest area in Kampong Chhnang Province.

Table 7: The CF Statistic in Kampong Chhnang Province, June 2013

No.	CF Name	CF Area (ha)	Commune	District	No. of village	CF Member (Family)	Date Approved by MAFF	Date CF Agreement
1	Pouhchrok Chomrok Pourtisen	1,366.43	Pou	Kampong Leng	6	530	19.11.08	03.12.10
2	Keoepch Ponreay	1,226.24	Chronok	Kampong Leng	4	1,104	19.11.08	03.12.10
3	Daraingsey ReaksmeY Toukmeas	1,241.29	Dar	Kampong Leng	5	638	19.11.08	03.12.10
4	Phnom Toekdos Srosbomprong	769.60	Svay Rompea	Kampong Leng	5	765	19.11.08	03.12.10
5	Kongrey Poubaing Krosantengkhlun	907.14	Trongoel	Kampong Leng	7	1,663	19.11.08	03.12.10
6	185 Kati Chombok Thom	631	Tropeng Chan	Boribo	3	559	20.08.10	23.08.11
7	Phnom Bongkok	112	Longveak	Kampong Trolach	1	190	20.08.10	08.09.11
8	Chea Rov	51	Rolea Pha Ea	Rolea Pha Ea	1	118	20.08.10	23.08.11
9	Chomkar Prey Sne Kanhchong	45	Chres	Kampong Trolach	1	204	20.08.10	08.09.11
10	Ouleach	30	Banteay Preal	Rolea Pha Ea	1	60	20.08.10	23.08.11
11	Chomkar Prey Sne Ou Rong	15	Ta Ches	Kampong Trolach	1	64	20.08.10	08.09.11
12	Chomkar Prey Sne Saray Anded	20	Chres	Kampong Trolach	1	104	20.08.10	08.09.11

No.	CF Name	CF Area (ha)	Commune	District	No. of village	CF Member (Family)	Date Approved by MAFF	Date CF Agreement
13	Chomkar Preay Sne Svaypakav	70	Taches	Kampong Trolach	1	329	20.08.10	08.09.11
14	Chomkar Sne Svay Krom	29	Taches	Kampong Trolach	1	135	20.08.10	08.09.11
15	Phum Tropengchan	201	Tropengchan	Boribo	1	295	20.08.10	23.08.11
16	Stung Khsacsor	1,460	Anhchanhrong	Boribo	5	912		
17	Phum Tropeng Phkom	71	Bontey Preal	Rolea PhaEa	1	118		
18	Phum Roseydos	62	Bontey Preal	Rolea PhaEa	1	51		
19	Taing Bompong	86	Choengkrea	Rolea PhaEa	1	178		
20	Phum OuToekchanh	28	Choengkrea	Rolea PhaEa	1	224		
21	Oupeam Reach	48	Brasnep	Rolea PhaEa	1	94		
22	Nortirokatevea	90	Brasnep	Rolea PhaEa	1	-192		
23	Oukombot	144	Brasnep	Rolea PhaEa	1	58		
24	Phum Brasnep	483	Brasnep	Rolea PhaEa	1	160		
25	Phum SaAng	522	Brasnep	Rolea PhaEa	1	184		
26	Phum Tropeng Ampoel	204	Brasnep	Rolea PhaEa	1	174		
27	Tropeng Romaing Meeunkor	274	Brasnep	Rolea PhaEa	1	149		
28	Krours	177	Rolea PhaEa	Rolea PhaEa	1	538		
29	Trpeng Trach	48	Rolea PhaEa	Rolea PhaEa	1	129		
30	Andoung Chros	90	Rolea PhaEa	Rolea PhaEa	1	152		
31	Phum TourlSomroung	198	Kraing Skuor	Toek Phos	1	123		
32	Chan Trok	56	Kraing Skuor	Toek Phos	1	180		
33	Phnom Banorn	154	Kraing Skuor	Toek Phos	1	155		
<b>Total</b>		<b>10,909.70</b>	<b>15</b>	<b>5</b>	<b>61</b>	<b>10,529</b>	<b>61</b>	<b>15</b>

Figure 7. The Map of Community Forest in Kampong Chhnang Province, June 2013



## 2.6. THE COMMUNITY FORESTRY IN KAMPONG THOM PROVINCE

The Ministry of Agriculture, Forestry and Fisheries issued the Prakas No. 489ប្រកាសកំណត់ dated 19 November 2008, No. 555ប្រកាសកំណត់ dated 20 August 2010 and No. 078ប្រកាសកំណត់ dated 19 February 2013 on The Establishment and Management of Community Forest area in Kampong Thom Province.

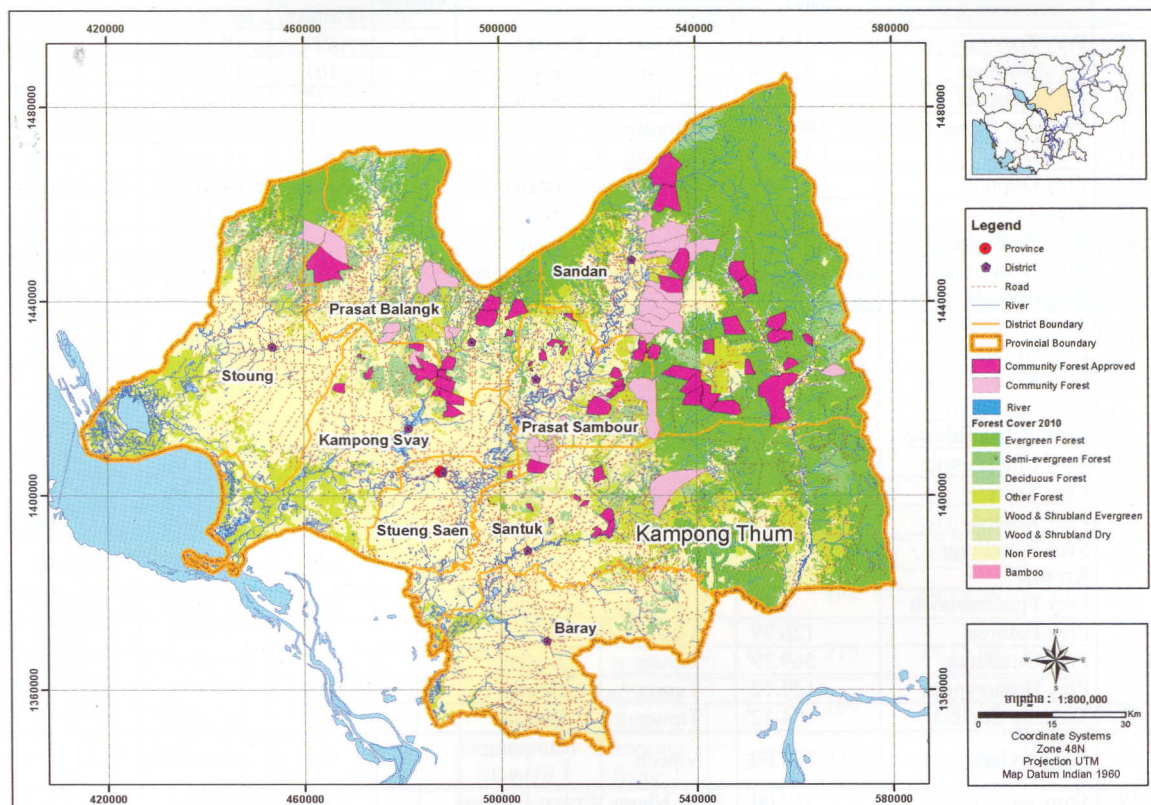
**Table 8: The CF Statistic in Kampong Thom Province, June 2013**

No.	CF Name	CF Area (ha)	Commune	District	No. of village	CF Member (Family)	Date Approved by MAFF	Date CF Agreement
1	Prey Sre Pring	309.00	Sochet	Sondan	1	24	20.08.10	29.06.12
2	Prey Pumrumchek	497.00	Sochet	Sondan	1	43	20.08.10	29.06.12
3	Lbos Srol	1,123.00	Sochet	Sondan	1	61	20.08.10	25.08.11
4	Prey Hongchotet	1,016.00	Meanrith	Sondan	2	65	20.08.10	25.08.11
5	Obosleav	1,359.00	Tomring	Sondan	1	98	20.08.10	25.08.11
6	Ou Daskor	1,135.00	Meanrith	Sondan	1	143	20.08.10	25.08.11
7	Prey Oula	605.00	Tomring	Sondan	1	77	20.08.10	29.06.12
8	Kokoh Paoup	438.00	Tomring	Sondan	1	104	20.08.10	29.06.12
9	Oukro Gnong	1,131.00	Meanrith	Sondan	1	120	20.08.10	29.06.12
10	Kmomsrokor Thlokrusey	675.09	Tropeng Russey	Kampong Svay	2	198	19.11.08	11.11.09
11	Ouchrangsor	1,702.33	Nipech	Kampong Svay	1	215	19.11.08	11.11.09
12	Prey Tapreas	239.07	Nipech	Kampong Svay	1	169	19.11.08	27.03.09
13	Thlok Popel	285.13	Domrey Slab	Kampong Svay	2	234	19.11.08	11.11.09
14	Tropeng Roung	977.53	Chey	Kampong Svay	4	427	19.11.08	11.11.09
15	Tropeng Lpeak	383.39	Nipech	Kampong Svay	1	195	19.11.08	11.11.09
16	Preyhom	407.74	Domrey Slab	Kampong Svay	1	321	19.11.08	27.03.09
17	Tropeng Trom Tropengkep	62.71	Domrey Slab	Kampong Svay	1	173	19.11.08	27.03.09
18	Chrang Krohorm	898.25	Kampong Svay	Kampong Svay	1	130	19.11.08	27.03.09
19	Prey Tboundg Domrey	153,64	Tboundg Kropeu	Steung Sen	1	153	19.11.08	27.03.09
20	Bos Lpeak	168,98	Sala Visay	Prasat Balang	1	133	19.11.08	27.03.09
21	Konseng Viel	1,263.49	Sala Visay	Prasat Balang	1	54	19.11.08	27.03.09
22	Monty Knong	940.19	Sala Visay	Prasat Balang	1	102	19.11.08	27.03.09
23	Oukla Dek	330.85	Sala Visay	Prasat Balang	1	132	19.11.08	27.03.09
24	Oupong Roung	677.69	Sala Visay	Prasat Balang	1	121	19.11.08	27.03.09
25	Sala Chdau	1,005.73	Sala Visay	Prasat Balang	1	87	19.11.08	27.03.09
26	Tropeng Kbalkmouch	907.51	Sala Visay	Prasat Balang	1	77	19.11.08	27.03.09
27	Khom Samaky	3,518.15	Samaky	Prasat Balang	5	730	19.11.08	11.11.09
28	Prey Pumchas	452.82	Sraeng	Prasat Sobor	1	118	19.11.08	27.03.09
29	Preyroung Knong	280.81	Sraeng	Prasat Sobor	1	77	19.11.08	27.03.09
30	Prey Oukombot	389.13	Kaul	Prasat Sobor	1	46	19.11.08	27.03.09
31	Samaky	623.97	Kaul	Prasat Sobor	2	93	19.11.08	27.03.09
32	Sre Preiy	825.05	Kaul	Prasat Sobor	1	62	19.11.08	27.03.09
33	Oucham Srey trodokpong	1,394.31	Sraeng	Prasat Sobor	1	120	19.11.08	27.03.09
34	Sombor	97.23	Somrbor	Prasat Sobor	1	190	19.11.08	27.03.09
35	Srey Yol	248.76	Somrbor	Prasat Sobor	1	107	19.11.08	27.03.09
36	Tropeng Preiy	161.81	Chouk	Prasat Sobor	1	99	19.11.08	27.03.09



No.	CF Name	CF Area (ha)	Commune	District	No. of village	CF Member (Family)	Date Approved by MAFF	Date CF Agreement
37	Prey Pos	164.64	Chouk	Prasat Sobor	1	199	19.11.08	27.03.09
38	Preah Sophea	325.30	Sorbor	Prasat Sobor	1	161	19.11.08	27.03.09
39	Khom Sochet	4,571.72	Sochet	Sandan	4	935	19.11.08	11.11.09
40	Prey Ou Thmor	1,064.97	Tomring	Sandan	1	59	19.11.08	11.11.09
41	Ou Meas	1,355.70	Tomring	Sandan	1	87	19.11.08	11.11.09
42	Prey Oupum	1,119.93	Tomring	Sandan	1	52	19.11.08	11.11.09
43	Prey Tatey	1,395.44	Meanrith	Sandan	1	91	19.11.08	11.11.09
44	Prey Neaktala	1,301.05	Tomring	Sandan	1	90	19.11.08	11.11.09
45	Prey Kbal Oukronhach	1,592.71	Meanrith	Sandan	1	219	19.11.08	11.11.09
46	Tombon Prey Choumsmach	1,445.65	Tomring	Sandan	1	114	19.11.08	11.11.09
47	Prey Kbal Ou Thnong	2,891.63	Dong Kombet	Sandan	3	244	19.11.08	30.06.10
48	Preay Kbal Takong	2,207.33	Dong Kombet	Sandan	2	140	19.11.08	30.06.10
49	Prey Chaengpum	143.86	Tipuor	Sontuk	1	84	19.11.08	27.03.09
50	Prey Tayong	528.18	Tipuor	Sontuk	1	131	19.11.08	27.03.09
51	Prey Kbalbey	760.86	Tipuor	Sontuk	1	61	19.11.08	27.03.09
52	Prey Pumbong Kropeu	9.87	KorKoh	Sontuk	1	155	19.11.08	27.03.09
53	Prey Phnomsruoch	6.99	KorKoh	Sontuk	1	117	19.11.08	27.03.09
54	Prey Puthrea	126.99	Tipuor	Sontuk	1	43	19.11.08	27.03.09
55	Prey Outakreas	569.29	Tipuor	Sontuk	1	102	19.11.08	27.03.09
56	Prey Bossreypeov	127.72	Tipuor	Sontuk	1	122	19.11.08	27.03.09
57	Tropeng Sondan	84.72	Tipuor	Sontuk	1	62	19.11.08	27.03.09
58	Ouphlovork	528.00	Nipech	Kampong Svay	1	89	19.02.13	
59	Tropeng Armperl	527.00	Phan Nhem	Prasat Balang	1	108	19.02.13	
60	Yeark Saim	641.00	Phan Nhem	Prasat Balang	1	122	19.02.13	
61	Oudombongdek	1,587.00	Tuol Krerl	Prasat Balang	1	112	19.02.13	
62	Pichtachea	1,850.00	Tuol Krerl	Prasat Balang	1	74	19.02.13	
63	OudonSauo	161.00	Sraeng	Prasat Sobor	2	67	19.02.13	
64	Prey Bontey	130.00	Tang Krosao	Prasat Sobor	5	370	19.02.13	
65	Bous Yey Nhep	111.00	Sala Visay	Prasat Balang	1	44		
66	Ouengkob Thom	378.00	Sala Visay	Prasat Balang	1	95		
67	Ousorm	308.00	Sala Visay	Prasat Balang	1	184		
68	Domnak Troseng	3,938.00	Sraeng	Prasat Sobor	3	637		
69	Boeng Romdourl	1,201.00	Chher Teal	Sandan	1	96		
70	Ke Rong	1,572.00	Chher Teal	Sandan	1	140		
71	Orngdong Preng	1,945.00	Chher Teal	Sandan	1	133		
72	Prey Kleng	2,085.00	Kleng	Sandan	1	203		
73	Prey Chor	647.00	Kleng	Sandan	1	69		
74	Kompou Chhouk	1,311.00	Kleng	Sandan	1	60		
75	Prey kbal Doungtey	1,812.00	Meanrith	Sandan	1	77		
76	Svay	1,786.00	Sandan	Sandan	1	105		
77	Kbal Khla	2,533.00	Sandan	Sandan	1	36		
78	Prey Krang	795.00	Sochet	Sandan	1	69		
79	Trob Nhok	41.00	KorKoh	Sontuk	1	150		
80	Vealou kdey	4,450.00	Kroyea	Sontuk	6	1,132		
81	Srel Krosang	1,853.00	Porpok	Stong	1	204		
82	Prey Orngdong	239.00	Trea	Stong	1	185		
<b>Total</b>		<b>80,907.91</b>	<b>27</b>	<b>7</b>	<b>111</b>	<b>13,107</b>	<b>64</b>	<b>57</b>

Figure 8. The Map of Community Forest in Kampong Thom Province, June 2013



## 2.7. THE COMMUNITY FORESTRY IN KAMPONG SPEU PROVINCE

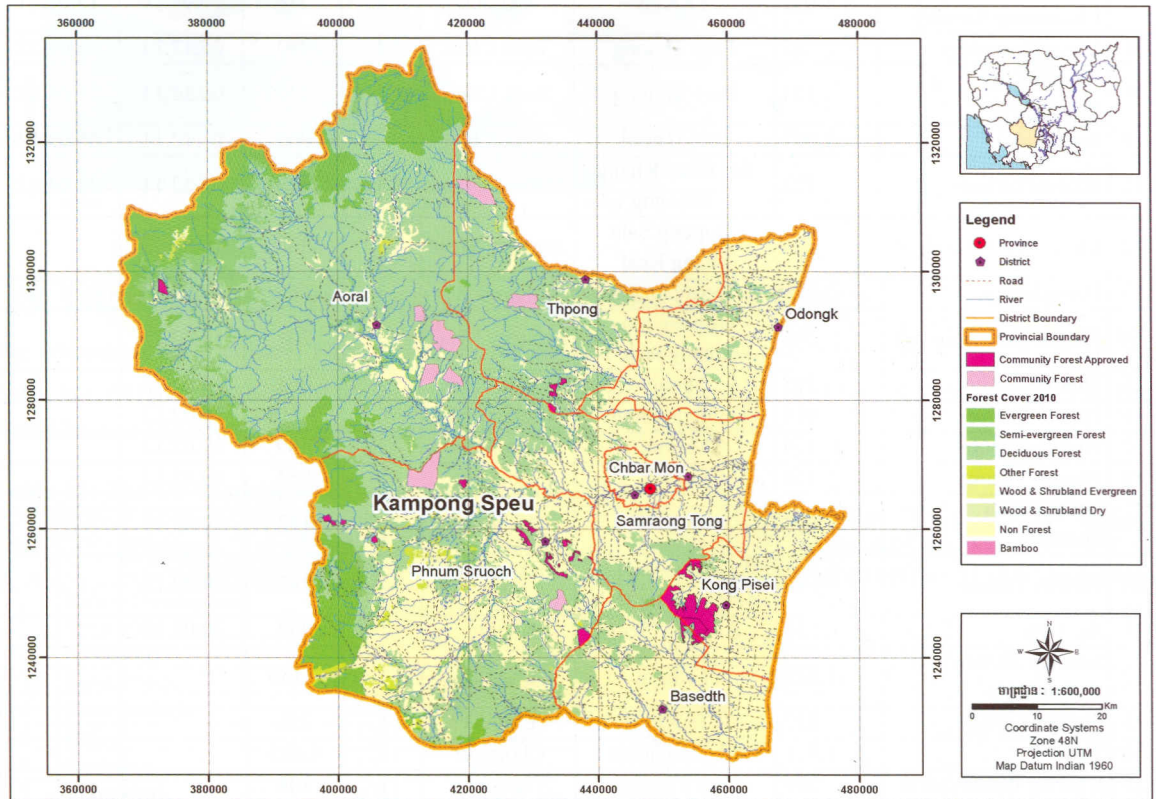
The Ministry of Agriculture, Forestry and Fisheries issued the Prakas No. 551ប្រក.កសក dated 20 August 2010, and No. 080ប្រក.កសក dated 19 February 2013 on The Establishment and Management of Community Forest area in Kampong Speu province.

Table 9: The CF Statistic in Kampong Speu Province, June 2013

No.	CF Name	CF Area (ha)	Commune	District	No. of village	CF Member (Family)	Date Approved by MAFF	Date CF Agreement
1	Chombok	286	Chombok	Phnom Srouch	3	146	20.08.10	14.10.11
2	Chong Eu Toch	425	Srong	Korng Pisey	4	219	20.08.10	09.12.10
3	Deykrohoh Kirivon	65	Kirivon	Phnom Srouch	2	208	20.08.10	14.10.11
4	Deykrohoh Mohasang	154	Mohasang	Phnom Srouch	5	447	20.08.10	14.10.11
5	Kompuolpich	119	Kirivon	Phnom Srouch	2	244	20.08.10	14.10.11
6	Kontuot Chrom	37	Kirivon	Phnom Srouch	1	57	20.08.10	14.10.11
7	Kirireaksmey Deydos	139	Tang Sya	Phnom Srouch	3	260	20.08.10	14.10.11
8	Krang Serey	93	Kirivon	Phnom Srouch	1	57	20.08.10	09.12.10
9	Krouchbuong	351	Chom Songke	Phnom Srouch	1	166	20.08.10	09.12.10
10	Leap Kuy	107	Tang Somrong	Phnom Srouch	3	185	20.08.10	14.10.11
11	Phnom Srong	2,406	Srong	Korng Pisey	14	1,324	20.08.10	09.12.10

No.	CF Name	CF Area (ha)	Commune	District	No. of village	CF Member (Family)	Date Approved by MAFF	Date CF Agreement
12	Rieng Pean	191	Prey Romdoul	Phnom Srouch	7	619	20.08.10	14.10.11
13	Svay Rompea	913	Svay Rompea	Borseth	6	575	20.08.10	09.12.10
14	Tang Bopong	240	Tasal	Oral	1	50	20.08.10	04.12.11
15	Torbmean	351	Torbmean	Thporng	6	286	20.08.10	04.12.11
16	Sen Monorom	447	Huong Somnorm	Oral	1	82	19.02.13	
17	Domrey Chakthlork	1,452	Kraing Deyvaiy	Phnom Srouch	1	183	19.02.13	
18	Chhrus Dombong	504	Chhom Sangke	Phnom Srouch	1	103	19.02.13	
19	Ouprech	660	HuongSomnorm	Oral	3	182		
20	Ouprean Mork	1,705	SangkeSatorp	Oral	4	267		
21	Amlaing	906	Amlaing	Thporng	3	215		
22	Brambey Mom	862	BrambeyMom	Thporng	1	267		
23	Phnom Pornhea Kong	489	Svay Chorchet	Bor Sed	1	112		
24	Chonguo Thom	622	Svay Chorchet	Bor Sed	1	180		
25	Chhros Chomchrey	255	Svay Chorchet	Bor Sed	1	70		
<b>Total</b>		<b>13,779</b>	<b>18</b>	<b>5</b>	<b>76</b>	<b>6,504</b>	<b>18</b>	<b>15</b>

Figure 9. The Map of Community Forest in Kampong Speu Province, June 2013



## 2.8. THE COMMUNITY FORESTRY IN KAMPOT PROVINCE

The Ministry of Agriculture, Forestry and Fisheries issued the Prakas No. 549ប្រកាស.កសិករ dated 20 August 2010, No. 610ប្រកាស.កសិករ dated 05 December 2011, and No. 075ប្រកាស.កសិករ dated 19 February 2013 on The Establishment and Management of Community Forest area in Kampot province.

**Table 10: The CF Statistic in Kampot Province, June 2013**

No.	CF Name	CF Area (ha)	Commune	District	No. of village	CF Member (Family)	Date Approved by MAFF	Date CF Agreement
1	Phnom Chong Ek	69	Ta Ken	Chhouk	1	100	20.08.10	15.08.11
2	Prey Kmao	197	Sre Knong	Chomkiri	1	143	20.08.10	16.12.10
3	Tropeng Sdao	341	Tropeng Pleng	Chhouk	1	225	20.08.10	15.08.11
4	Thmosor ROUNGkla	590	Sre Cheng	Chomkiri	3	1,139	20.08.10	16.12.10
5	Domnak nakta Thmor Pon	985	Ser Knong	Chomkiri	3	785	20.08.10	16.12.10
6	Domnak Rolous Bovor Thmor Thom	587	Sre Somrong	Chomkiri	5	970	20.08.10	16.12.10
7	Phnom Thom Chomnong Samaky	1,015	Ta Ken	Chhouk	1	216	20.08.10	15.08.11
8	Chros Korngkep	85	Prey Thnong	Toek Chhu	2	493	05.12.11	26.04.12
9	Phnom Koupp Tyuong	121	Prey Thnong	Toek Chhu	1	233	05.12.11	26.04.12
10	Prey Tnuot	1,007	Prey Tnuot	Toek Chhu	4	969	05.12.11	26.04.12
11	Phnom Tortoep	723	Sre Chea Khang Thboun	Dong Tong	3	673	05.12.11	26.04.12
12	Chrey Broteakkrola	154	Tropeng Sala khang Keat	Bontey Meas	3	372	19.02.13	
13	DermDoung	289	DermDoung	Angkor Chey	3	659	19.02.13	
14	Phnom Dounbun	206	Tropeng Sala khang lech	Bontey Meas	3	207	19.02.13	
15	Phnom Chup	295	Thmey	Toek Chhu	4	661	19.02.13	
16	Phnom Senhan	914	Dombok khpus	Angkor Chey	6	1,118	19.02.13	
17	Phnom Marom	134	Marom	Angkor Chey	3	389	19.02.13	
18	Phnom Thnout	458	Laback	Chhouk	3	954	19.02.13	
19	Phnom Khla khampen	453	Ta Ken	Chhouk	1	152	19.02.13	
20	Phnom Thakao	49	Kampong Trach khang lech	Kampong Trach	3	293	19.02.13	
21	Sre Leav	31	Tropeng Pleng	Chhouk	1	273	20.08.10	
22	Samaky Phnom chorm Malu	1,629	Ta Ken	Chhouk	1	2,136		
23	Phnom Krong	122	Ta Ken	Chhouk	1	258		
24	Tatoun	1,171	SnaOrnchoeut	Chomkiri	3	1,495		
25	Khong PhnomTakul	586	Sre Cheng	Chomkiri	1	308		
26	Phnom Tortoeng	115	Thmey	Toek Chhu	1	269		
27	Konsat	204	Thmey	Toek Chhu	1	318		
<b>Total</b>		<b>12,530</b>	<b>17</b>	<b>7</b>	<b>63</b>	<b>15,806</b>	<b>21</b>	<b>11</b>

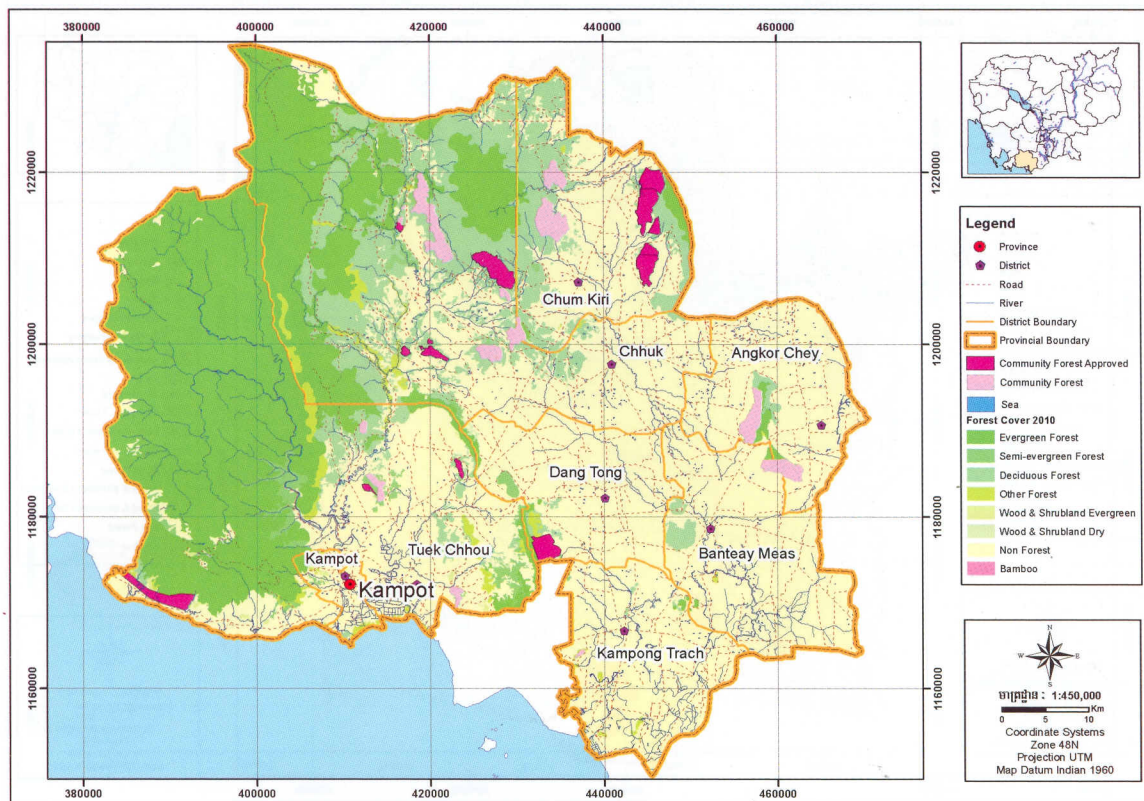
## 2.8. THE COMMUNITY FORESTRY IN KAMPOT PROVINCE

The Ministry of Agriculture, Forestry and Fisheries issued the Prakas No. 549ប្រក.កសក dated 20 August 2010, No. 610ប្រក.កសក dated 05 December 2011, and No. 075ប្រក.កសក dated 19 February 2013 on The Establishment and Management of Community Forest area in Kampot province.

**Table 10: The CF Statistic in Kampot Province, June 2013**

No.	CF Name	CF Area (ha)	Commune	District	No. of village	CF Member (Family)	Date Approved by MAFF	Date CF Agrement
1	Phnom Chong Ek	69	Ta Ken	Chhouk	1	100	20.08.10	15.08.11
2	Prey Kmao	197	Sre Knong	Chomkiri	1	143	20.08.10	16.12.10
3	Tropeng Sdao	341	Tropeng Pleng	Chhouk	1	225	20.08.10	15.08.11
4	Thmosor ROUNGKla	590	Sre Cheng	Chomkiri	3	1,139	20.08.10	16.12.10
5	Domnak nakta Thmor Pon	985	Sre Knong	Chomkiri	3	785	20.08.10	16.12.10
6	Domnak Rolous Bovor Thmor Thom	587	Sre Somrong	Chomkiri	5	970	20.08.10	16.12.10
7	Phnom Thom Chomnong Samaky	1,015	Ta Ken	Chhouk	1	216	20.08.10	15.08.11
8	Chros Korngkep	85	Prey Thnong	Toek Chhu	2	493	05.12.11	26.04.12
9	Phnom Koup Tyuong	121	Prey Thnong	Toek Chhu	1	233	05.12.11	26.04.12
10	Prey Tnuot	1,007	Prey Tnuot	Toek Chhu	4	969	05.12.11	26.04.12
11	Phnom Tortoep	723	Sre Chea Khang Thboun	Dong Tong	3	673	05.12.11	26.04.12
12	Chrey Broteakkrola	154	Tropeng Sala khang Keat	Banteay Meas	3	372	19.02.13	
13	DermDoung	289	DermDoung	Angkor Chey	3	659	19.02.13	
14	Phnom Dounbun	206	Tropeng Sala khang lech	Banteay Meas	3	207	19.02.13	
15	Phnom Chup	295	Thmey	Toek Chhu	4	661	19.02.13	
16	Phnom Senhan	914	Dombok khpus	Angkor Chey	6	1,118	19.02.13	
17	Phnom Marom	134	Marom	Angkor Chey	3	389	19.02.13	
18	Phnom Thnout	458	Labaek	Chhouk	3	954	19.02.13	
19	Phnom Khla khampen	453	Ta Ken	Chhouk	1	152	19.02.13	
20	Phnom Thakao	49	Kampong Trach khang lech	Kampong Trach	3	293	19.02.13	
21	Sre Leav	31	Tropeng Pleng	Chhouk	1	273	20.08.10	
22	Samaky Phnom chorm Malu	1,629	Ta Ken	Chhouk	1	2,136		
23	Phnom Krong	122	Ta Ken	Chhouk	1	258		
24	Tatoun	1,171	SnaOrnchoeut	Chomkiri	3	1,495		
25	Khong PhnomTakul	586	Sre Cheng	Chomkiri	1	308		
26	Phnom Tortoeng	115	Thmey	Toek Chhu	1	269		
27	Konsat	204	Thmey	Toek Chhu	1	318		
<b>Total</b>		<b>12,530</b>	<b>17</b>	<b>7</b>	<b>63</b>	<b>15,806</b>	<b>21</b>	<b>11</b>

Figure 10. The Map of Community Forest in Kampt Province, June 2013



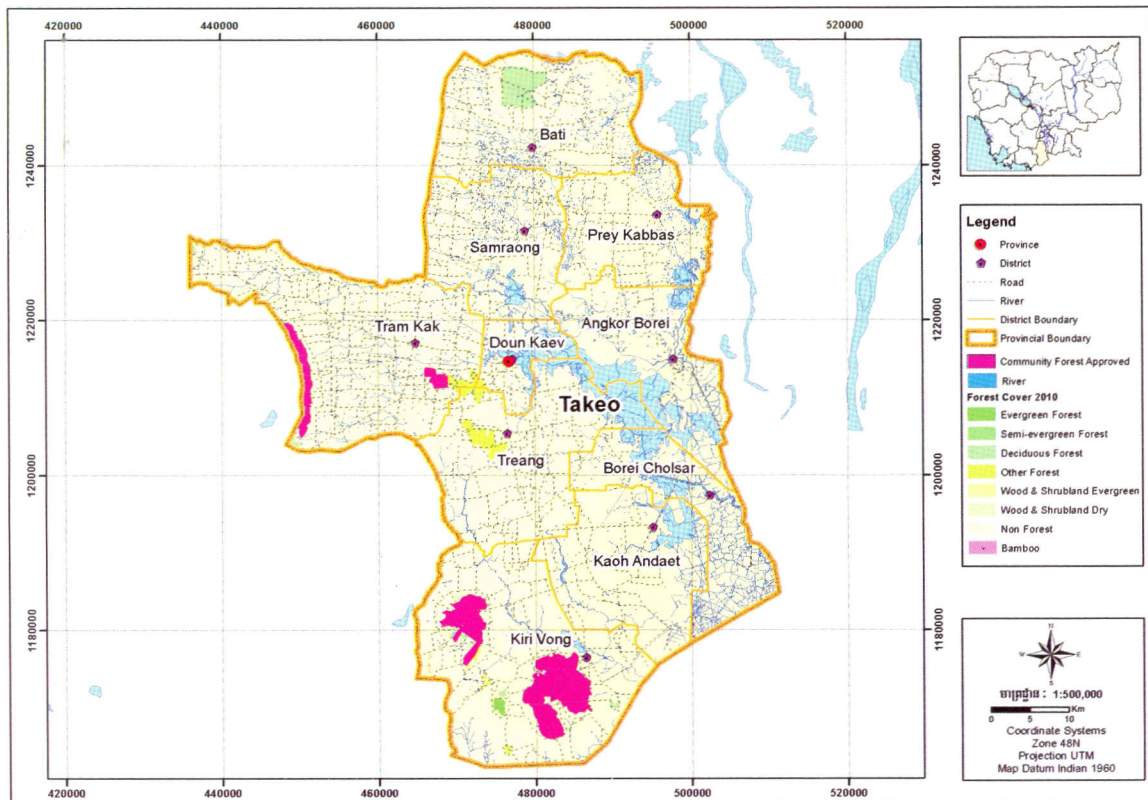
## 2.9. THE COMMUNITY FORESTRY IN TAKEO PROVINCE

The Ministry of Agriculture, Forestry and Fisheries issued the Prakas No. 550ប្រក.កសក dated 20 August 2010, No. 611ប្រក.កសក dated 05 December 2011, and No. 074ប្រក.កសក dated 19 February 2013 on The Establishment and Management of Community Forest area in Takeo province.

Table 11: The CF Statistic in Takeo Province, June 2013

No.	CF Name	CF Area (ha)	Commune	District	No. of village	CF Member (Family)	Date Approved by MAFF	Date CF Agreement
1	Diverse Development Association	557	Sre Ronong, Leaybor	Tram Kork	10	780	20.08.10	20.03.12
2	Kompeng	654	Kompeng	Kirivong	13	1,019	05.12.11	
3	Kouk Prech	1,270	Kouk Prech	Kirivong	10	1,567	05.12.11	
4	Rom Andaek	692	Rom Andaek	Kirivong	5	658	05.12.11	
5	Kous	520	Kous	Tram Kork	7	571	05.12.11	20.03.12
6	Somrong	332	Somrong	Tram Kork	5	405	05.12.11	20.03.12
7	Tram Kork	434	Tram Kork	Tram Kork	5	424	05.12.11	20.03.12
8	Tropeng KhangTboung	583	Tropeng Khang Tboung	Tram Kork	7	712	19.02.13	
9	Maharsey	1,581	Prey Ampork	Kirivong	9	1,176	19.02.13	
10	Payangkao	875	Preah Bart Chon Chum	Kirivong	8	1,498	19.02.13	
11	Chrus Pha oak	1,587	Kiri Chung Koh	Kirivong	6	582	19.02.13	
12	Ou Tavan	1,168	Saom	Kirivong	12	1,565	19.02.13	
13	Preah Sork Chrok Ta men	538	Ta Ou	Kirivong	9	1,644	19.02.13	
<b>Total</b>		<b>10,791</b>	<b>14</b>	<b>2</b>	<b>106</b>	<b>12,601</b>	<b>13</b>	<b>4</b>

Figure 11. The Map of Community Forest in Takeo Province, June 2013



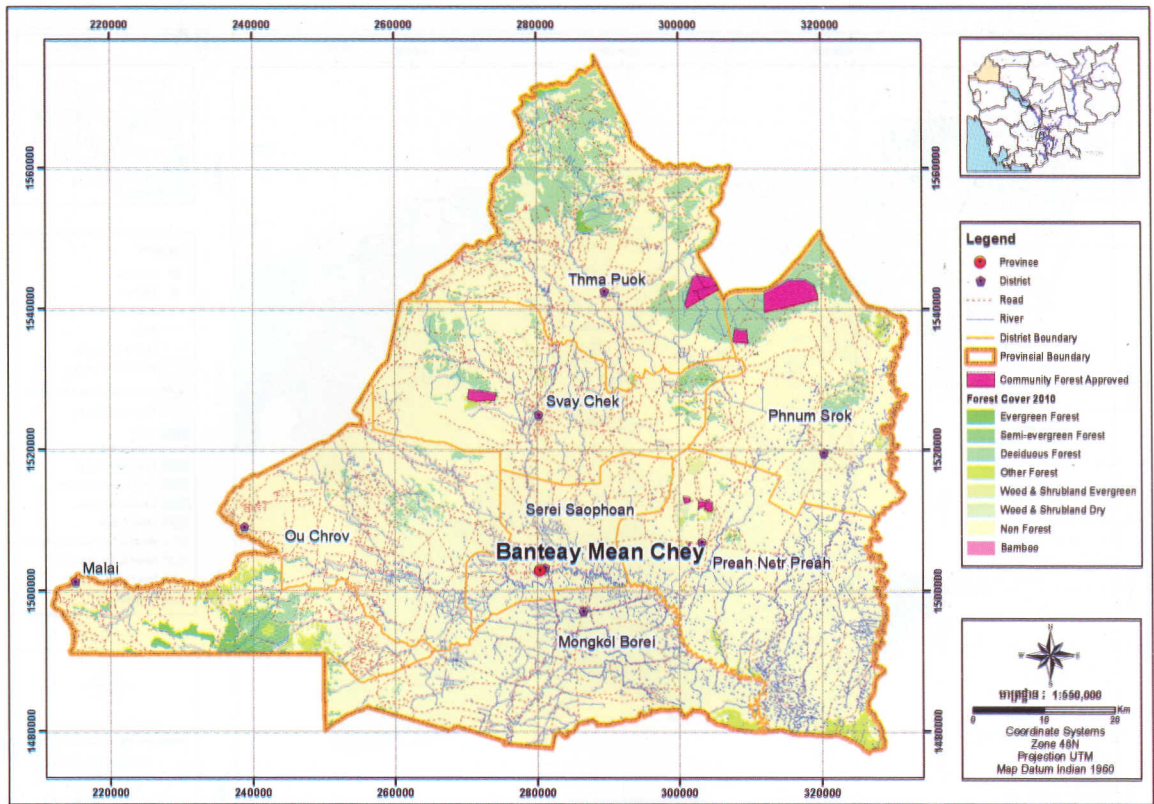
## 2.10. THE COMMUNITY FORESTRY IN BANTEAY MEANCHHEY PROVINCE

The Ministry of Agriculture, Forestry and Fisheries issued the Prakas No. 488្រ្រក.កំសកំ dated 19 November 2008 on The Establishment and Management of Community Forest area in Banteay Meanchey province.

Table 12: The CF Statistic in Banteay Meanchey Province, June 2013

No.	CF Name	CF Area (ha)	Commune	District	No. of village	CF Member (Family)	Date Approved by MAFF	Date CF Agreement
1	Kirikanop Trop	143	Chup Veary	Preah Net Preah	1	132	19.11.08	25.11.09
2	Tropeng Russey Kaet	93	Chup Veary	Preah Net Preah	1	175	19.11.08	25.11.09
3	Tropeng Russey Lech	70	Chob Veary	Preah Net Preah	1	175	19.11.08	25.11.09
4	Pacy Tapen	110	Preah Net Preah	Preah Net Preah	1	88	19.11.08	25.11.09
5	Phnom Chunh Chang	28	Chup Veary	Preah Net Preah	2	339	19.11.08	25.11.09
6	Punsay Choeng	531	Svay Chek	Svay Chek	1	100	19.11.08	25.11.09
7	Prasat Veau	360	Pkom	Svay Chek	1	68	19.11.08	25.11.09
8	Kon Klaeng	2,373	Poycha	Phnom Srok	3	432	19.11.08	25.11.09
9	Phnom Preah Khum Banteay Chhma	314	Banteay Chhma	Thmor Pouk	4	104	19.11.08	25.11.09
10	Phnom Preah Khum Phumthmey	323	Pom Thmey	Thmor Pouk	4	1,075	19.11.08	25.11.09
11	Phnom Preah Khum Thmor Pouk	315	Thmor Pouk	Thmor Pouk	4	391	19.11.08	25.11.09
12	Phnom Preah Khum Kok Kothen	310	Kork Kathen	Thmor Pouk	3	771	19.11.08	25.11.09
<b>Total</b>		<b>4,970</b>	<b>9</b>	<b>4</b>	<b>26</b>	<b>3,875</b>	<b>12</b>	<b>12</b>

Figure 12. The Map of Community Forest in Banteay Meanchey Province, June 2013



## 2.11. THE COMMUNITY FORESTRY IN BATTAMBONG PROVINCE

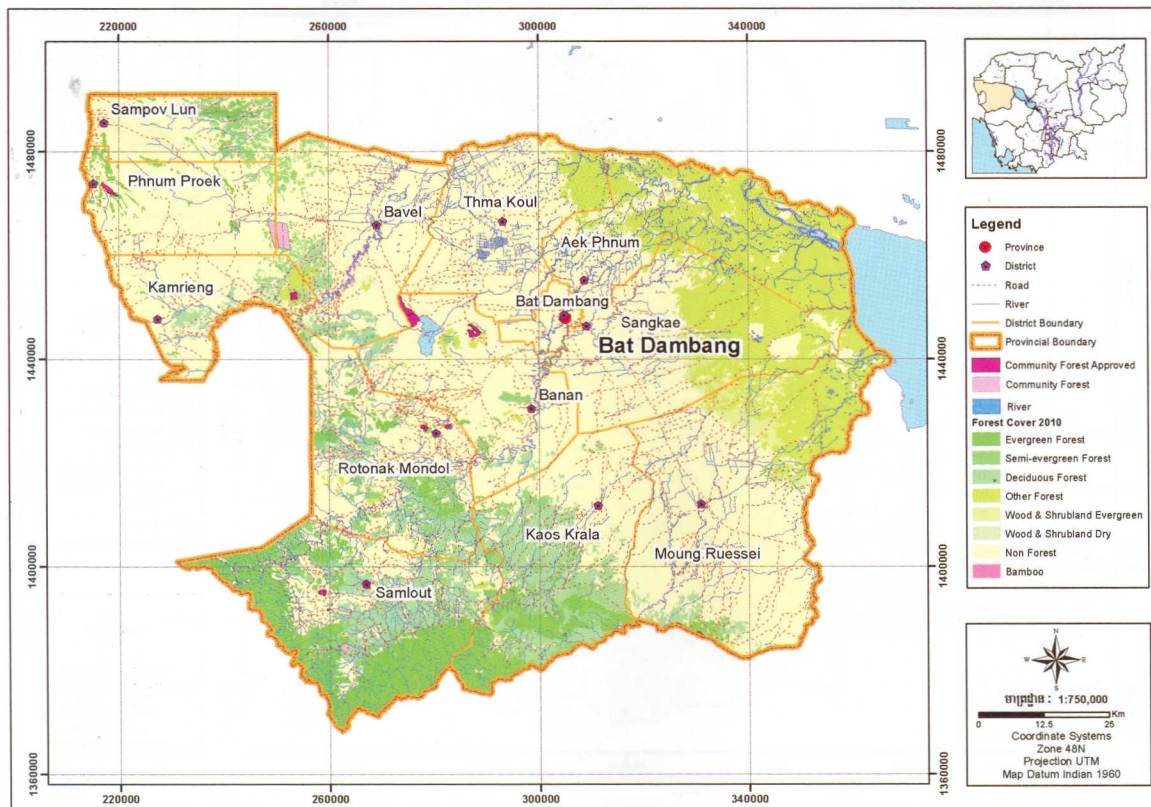
The Ministry of Agriculture, Forestry and Fisheries issued the Prakas No. 210ប្រកាសកំណត់ dated 15 June 2010 on The Establishment and Management of Community Forest area in Battambang province.

Table 13: The CF Statistic in Battambang Province, June 2013

No.	CF Name	CF Area (ha)	Commune	District	No. of village	CF Member (Family)	Date Approved by MAFF	Date CF Agreement
1	Kiriseila Keo	366	Ta Kream	Banon	1	161	15.03.10	21.12.11
2	Pheakdeay	370	Ta Kream	Banon	1	219	15.03.10	21.12.11
3	Phum Thmey	315	Ta Kream	Banon	1	347	15.03.10	21.12.11
4	Kok Chor	47	Sdoa	Ratanak Mondul	1	44	15.03.10	21.12.11
5	Phnom Dong Kot	65	Sdoa	Ratanak Mondul	1	47	15.03.10	21.12.11
6	Phnom Sloek	91	Sdoa	Ratanak Mondul	1	90	15.03.10	21.12.11
7	Pom Kondal	130	Sung	Somlot	1	189	15.03.10	21.12.11
8	Sung 1	17	Sung	Somlot	1	147	15.03.10	21.12.11
9	BoengChreyKroem	163	Ta Krey	KomReang	1	81	15.03.10	15.11.12
10	Phnom Rong	377	Preay Trolach	Rokakiri	5	178	15.03.10	15.11.12
11	Preay Trolach	1,332	Preay Trolach	Rokakiri	5	514	15.03.10	15.11.12
12	Tuol Khpours	191	Phnom Proek	PhnomProek	1	130	15.03.10	15.11.12
13	Beng Sa Art	67	Phnom Proek	Phnom Proek	1	120	15.03.10	15.11.12
14	Phum Doung	562	Ampoel Pram Daem	Borvel	1	41		
15	Phom Bourun	541	Ampoel Pram Daem	Borvel	1	70		
16	Phum Sathaphor	574	Ampoel Pram Daem	Borvel	1	69		
17	Phum Phnom Rey	207	Ta Touk	Somlot	1	104		
<b>Total</b>		<b>5,415</b>	<b>8</b>	<b>7</b>	<b>25</b>	<b>2,551</b>	<b>13</b>	<b>13</b>



Figure 13. The Map of Community Forest in Battambang Province, June 2013



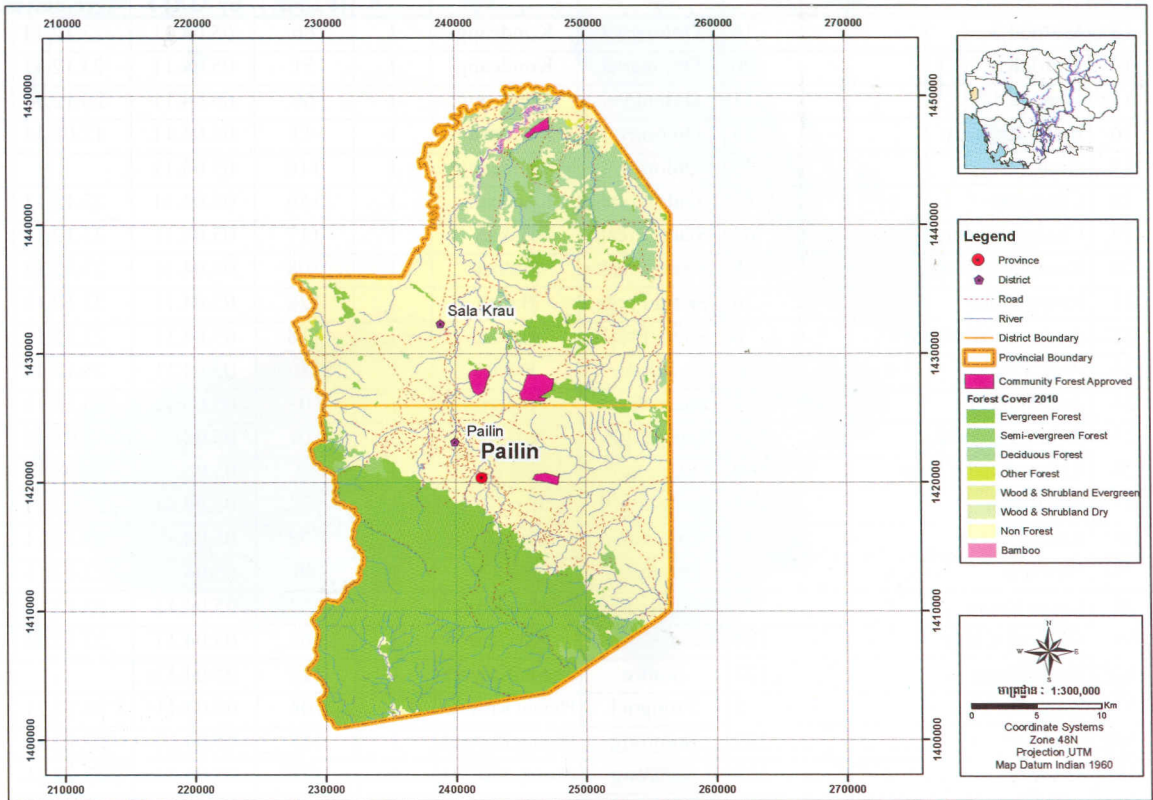
## 2.12. THE COMMUNITY FORESTRY IN PAILIN PROVINCE

The Ministry of Agriculture, Forestry and Fisheries issued the Prakas No. 102ប្រកាសកំណត់ dated 15 March 2010 on The Establishment and Management of Community Forest area in Pailin province.

Table 14: The CF Statistic in Pailin Province, June 2013

No.	CF Name	CF Area (ha)	Commune	District	No. of village	CF Member (Family)	Date Approved by MAFF	Date CF Agreement
1	Rotkros	118	Outavao	Pailin	1	150	15.03.10	29.05.13
2	Dos Kromom	230	Ou Onduong, Steungkach	Sala Krav	3	192	15.03.10	29.05.13
3	Phnom Srong	400	Ou Onduong, Steungkach	Sala Krav	7	562	15.03.10	29.05.13
4	Sre Anteak	110	Sala Krav	Sala Krav	1	120	15.03.10	29.05.13
<b>Total</b>		<b>858</b>	<b>4</b>	<b>2</b>	<b>12</b>	<b>1,024</b>	<b>4</b>	<b>4</b>

Figure 14. The Map of Community Forest in Pailin Province, June 2013



### 2.13. THE COMMUNITY FORESTRY IN PURSAT PROVINCE

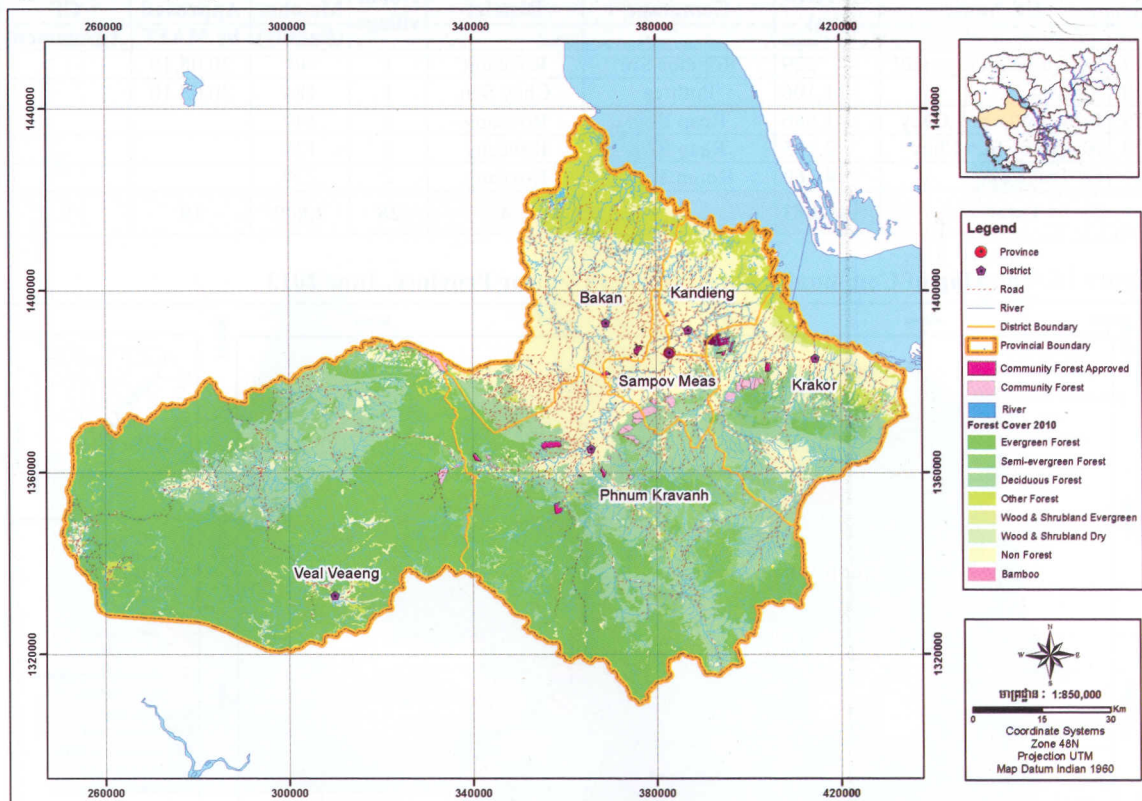
The Ministry of Agriculture, Forestry and Fisheries issued the Prakas No. 146ប្រក.កំសក dated 05 April 2011, and No. 073ប្រក.កំសក dated 19 February 2013 on The Establishment and Management of Community Forest area in Pursat province.

Table 15: The CF Statistic in Pursat Province, June 2013

No.	CF Name	CF Area (ha)	Commune	District	No. of village	CF Member (Family)	Date Approved by MAFF	Date CF Agreement
1	Prek Chhoeutrav	69	Onlongvel	Kondeang	1	79	05.04.11	12.08.11
2	Onlongvel	33	Onlongvel	Kondeang	1	39	05.04.11	12.08.11
3	Boeng Chouk	54	Onlongvel	Kondeang	1	47	05.04.11	12.08.11
4	Chhey Chhomnes	56	Onlongvel	Kondeang	1	88	05.04.11	12.08.11
5	Kanhchhoeu Baydach	26	Onlongvel	Kondeang	1	53	05.04.11	23.12.11
6	Koh Krosaing	41	Onlongvel	Kondeang	1	46	05.04.11	23.12.11
7	Kbal Romeas	73	Onlongvel	Kondeang	1	97	05.04.11	12.08.11
8	Phtas Kor	56	Onlongvel	Kondeang	1	107	05.04.11	12.08.11
9	Kampong Krobeay	26	Onlongvel	Kondeang	1	45	05.04.11	23.12.11
10	Prek Takong	38	Onlongvel	Kondeang	1	47	05.04.11	12.08.11
11	Prek Tavong	37	Onlongvel	Kondeang	1	58	05.04.11	12.08.11
12	Oubakrong	22	Onlongvel	Kondeang	1	48	05.04.11	23.12.11

No.	CF Name	CF Area (ha)	Commune	District	No. of village	CF Member (Family)	Date Approved by MAFF	Date CF Agreement
13	Watpou 2	16	Onlongvel	Kondeang	1	66	05.04.11	23.12.11
14	Tourlchar	20	Onlongvel	Kondeang	1	51	05.04.11	23.12.11
15	Watpou 1	11	Onlongvel	Kondeang	1	66	05.04.11	23.12.11
16	Palov Krobeay	35	Onlongvel	Kondeang	1	43	05.04.11	12.08.11
17	Aren	53	Onlongvel	Kondeang	1	116	05.04.11	
18	Chhreang	42	Onlongvel	Kondeang	1	156	05.04.11	23.12.11
19	Chaeng Ploeung	64	Snam Preah	Bakan	1	117	05.04.11	23.12.11
20	Kompheng Svay	88	Snam Preah	Bakan	1	108	05.04.11	23.12.11
21	Kropoeu Ro	36	Snam Preah	Bakan	1	128	05.04.11	23.12.11
22	Anduong Sombour	6	Snam Preah	Bakan	1	118	05.04.11	23.12.11
23	Prey Vaing	6	Talou	Bakan	1	180	05.04.11	23.12.11
24	Anlongmean	9	Snam Preah	Bakan	1	103	05.04.11	23.12.11
25	Rolours Kondal	128	KampongRo	Kro Kor	1	101	05.04.11	12.08.11
26	Roluos Khang Kaet	100	KampongRo	Kro Kor	1	71	05.04.11	12.08.11
27	Sna Reach	103	KampongRo	Kro Kor	1	68	05.04.11	12.08.11
28	Kraing Thom	99	Ousandan	Kro Kor	1	102	05.04.11	23.12.11
29	Thnoeng	81	Ousandan	Kro Kor	1	86	05.04.11	23.12.11
30	Takeo Krom	77	BoengKontourt	Kro Kor	1	153	05.04.11	23.12.11
31	Tropeng Khley	104	BeungKontuot	Kro Kor	1	162	05.04.11	23.12.11
32	Sre Porpeay	122	Sontre	PhnomKrovach	1	117	05.04.11	
33	Somrong Year	5	Prongoel	Phnom Krovach	1	106	05.04.11	23.12.11
34	Veal	285	Somrong	Phnom Krovach	1	145	05.04.11	23.12.11
35	Rovieng	139	Somrong	Phnom Krovach	1	171	05.04.11	23.12.11
36	Prek 1	511	Somrong	Phnom Krovach	1	237	05.04.11	23.12.11
37	Domnak Ampoel	104	Loloksor	Sompour Meas	1	167	05.04.11	
38	Veal Vong	8	Rokat	Phnom Krovach	1	201	05.04.11	23.12.11
39	Prohoh Kbal	18	Phtas ROUNG	Phnom Krovach	1	101	19.02.13	
40	Chamborkmeas	40	Snam Preah	Bakan	1	232	19.02.13	
41	Phum Ou achkok	126	Ou sondan	Kro Kor	1	118		
42	Phum Chorm makean	332	Thnot Chum	Kro Kor	1	89		
43	Phum Bangkorng Khmom	299	Thnot Chum	Kro Kor	1	128		
44	Prey Khla	261	Thnot Chum	Kro Kor	1	105		
45	Krobey Sor	167	Thnot Chum	Kro Kor	1	82		
46	Phum Chhoeuteal	471	Thnot Chum	Kro Kor	1	159		
47	Stung Thmey	502	Bromouy	Veal Veng	1	77		
48	Phum Kompeng	183	Prongoel	Phnom Krovach	1	213		
49	Prongoel	249	Prongoel	Phnom Krovach	1	372		
50	Phum Svaypak	172	Prongoel	Phnom Krovach	1	240		
51	Oubaktra	849	Prongoel	Phnom Krovach	1	360		
52	Ousrar	207	Prongoel	Phnom Krovach	1	209		
53	Phum Koltortoeng	39	Sontre	Phnom Krovach	1	209		
54	Phum Ksetborey	74	Sontre	Phnom Krovach	1	286		
55	Tourl Kruos	126	Chamraen Phal	Sompeov Meas	1	231		
56	Ou thakov	388	Roleap	SompeovMeas	1	324		
<b>Total</b>		<b>7,286</b>	<b>17</b>	<b>6</b>	<b>56</b>	<b>7,428</b>	<b>40</b>	<b>35</b>

Figure 15. The Map of Community Forest in Pursat Province, June 2013



## 2.14. THE COMMUNITY FORESTRY IN PRAEH VIHEAR PROVINCE

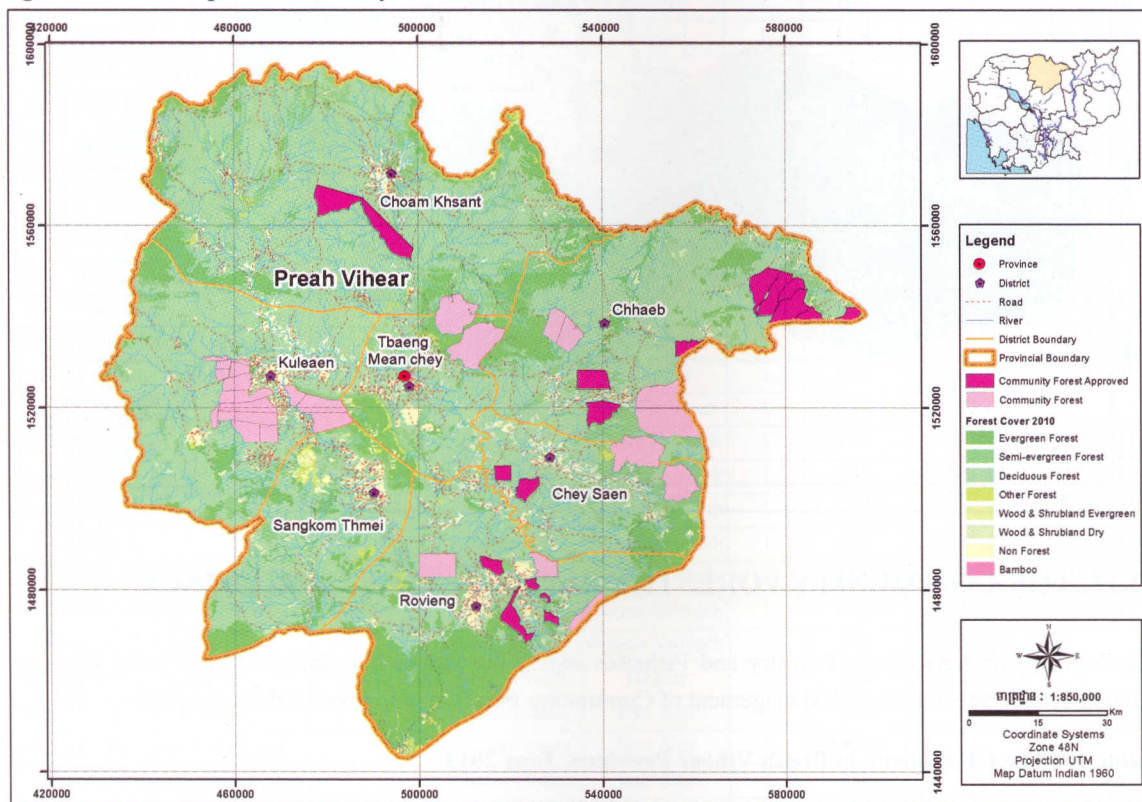
The Ministry of Agriculture, Forestry and Fisheries issued the Prakas No. 552ប្រក.កសិក. dated 20 August 2010 on The Establishment and Management of Community Forest area in Preah Vihear province.

Table 16: The CF Statistic in Preah Vihear Province, June 2013

No.	CF Name	CF Area (ha)	Commune	District	No. of village	CF Member (Family)	Date Approved by MAFF	Date CF Agreement
1	Chhep Lech	2,642	Chhep 1	Chhep	1	306	20.08.10	25.01.13
2	Kampong Sronos	3,130	Kampong Srolao 1	Chhep	1	118	20.08.10	25.01.13
3	Preah Lean	1,233	Kampong Srolao 2	Chhep	1	44	20.08.10	25.01.13
4	Preah Eanpkayreas	1,332	Kampong Srolao 2	Chhep	1	95	20.08.10	25.01.13
5	Prey Chongha Thom	1,592	Kampong Srolao 2	Chhep	1	51	20.08.10	25.01.13
6	Prey Niyuom Tropeng Chombok	3,682	Kampong Srolao 1	Chhep	3	56	20.08.10	25.01.13
7	Sangke	2,718	Sangke	Chhep	1	140	20.08.10	25.01.13
8	Tropeng Kbaldomrey	3,018	Kampong Srolao 2	Chhep	1	80	20.08.10	25.01.13
9	Romdos Sre 1	3,975	Romdos Sre	Chum Kasan	1	223	20.08.10	
10	Romdos Sre 2	4,507	Romdos Sre	Chum Kasan	1	195	20.08.10	
11	Sompreang	566	Rotanak	Roveang	1	38	20.08.10	
12	Khna	524	Rotanak	Roveang	3	57	20.08.10	
13	Kunapheap	1,526	Chhep 2	Chhep	1	98	20.08.10	
14	Phnom Kremorodok	2,313	Rotanak	Roveang	2	247	20.08.10	
15	Prey Khlong Tropeng Sa Ang	1,708	Puthrea	Chey Sen	3	191	20.08.10	
16	Kiri Meanchey	1,262	Rek Reay	Roveang	1	132	20.08.10	

No.	CF Name	CF Area (ha)	Commune	District	No. of village	CF Member (Family)	Date Approved by MAFF	Date CF Agreement
17	Sompreang Preysnuol	229	Romdos Sre	Roveang	1	40	20.08.10	
18	Krovan	1,106	Puthrea	Chey Sen	1	184	20.08.10	
19	Prey Long Sen Chey	1,986	Reap Roy	Roveang	2	147		
20	Reap Roy Sen Chey	2,135	Reap Roy	Roveang	1	138		
21	Or Trol Lork	4,160	Roum Tom	Roveang	2	229		
<b>Total</b>		<b>45,063</b>	<b>11</b>	<b>4</b>	<b>28</b>	<b>2,809</b>	<b>18</b>	<b>8</b>

Figure 16. The Map of Community Forest in Preah Vihear Province, June 2013



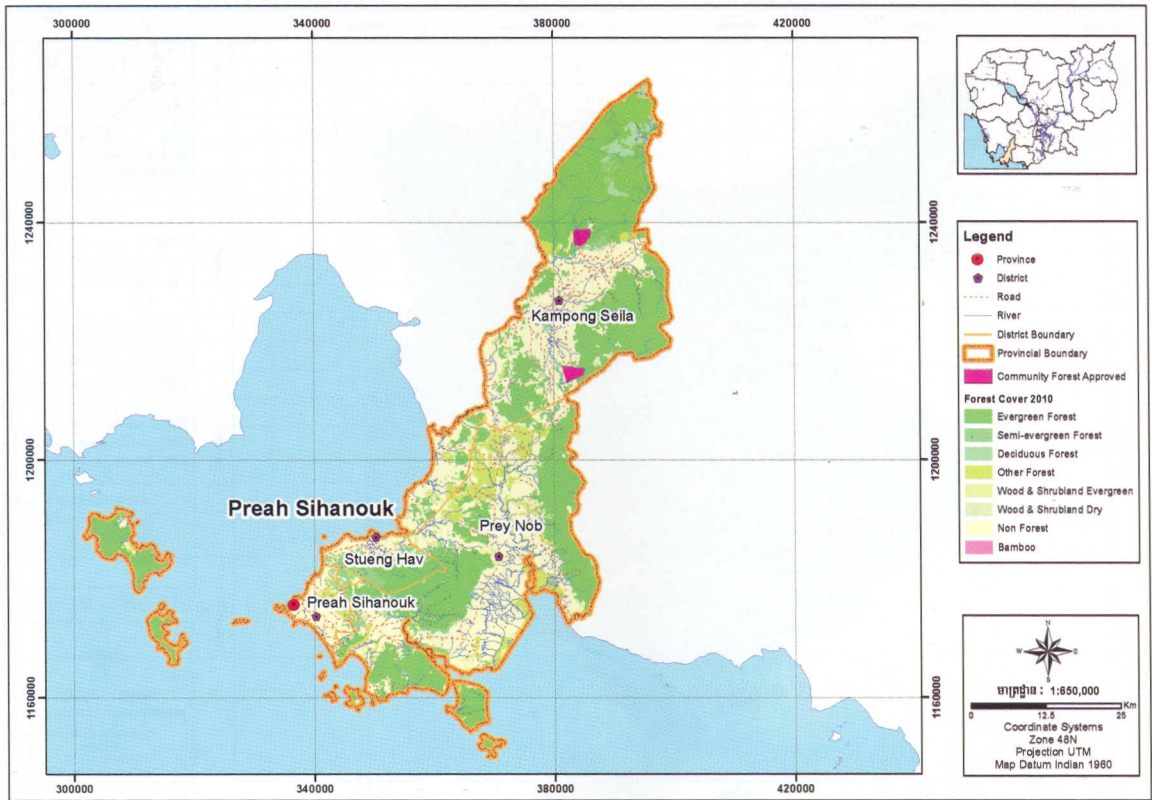
## 2.15. THE COMMUNITY FORESTRY IN PRAEH SIHANOUK PROVINCE

The Ministry of Agriculture, Forestry and Fisheries issued the Prakas No. 486ប្រក.កសក dated 19 November 2008, and No. 319ប្រក.កសក dated 21 May 2012 on The Establishment and Management of Community Forest area in Preah Sihanouk province.

Table 17: The CF Statistic in Preah Sihanouk Province, June 2013

No.	CF Name	CF Area (ha)	Commune	District	No. of village	CF Member (Family)	Date Approved by MAFF	Date CF Agreement
1	NaktathmorProng	592	Kampong Sela	KampongSela	1	239	19.11.08	19.12.10
2	Thmor Rong	682	Kampong Sela, Ou bakrotés	KampongSela	2	253	21.05.12	
<b>Total</b>		<b>1,274</b>	<b>2</b>	<b>1</b>	<b>3</b>	<b>492</b>	<b>2</b>	<b>1</b>

Figure 17. The Map of Community Forest in Preah Sihanouk Province, June 2013



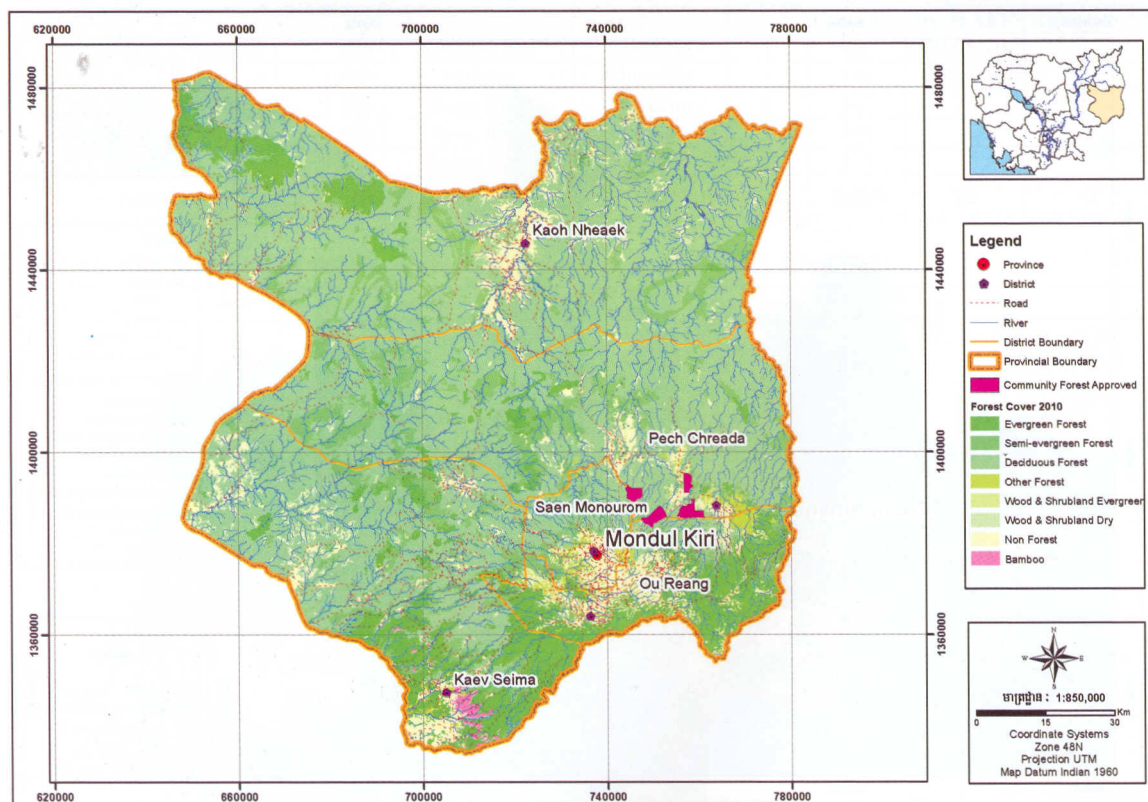
## 2.16. THE COMMUNITY FORESTRY IN MUNDULKIRI PROVINCE

The Ministry of Agriculture, Forestry and Fisheries issued the Prakas No. 076ប្រក្រឹត្យទី០៧៦ ចុះថ្ងៃទី១៩ ខែកុម្ភៈ ឆ្នាំ២០១៣ ចុះថ្ងៃទី១៩ ខែកុម្ភៈ ឆ្នាំ២០១៣ on The Establishment and Management of Community Forest area in Mondul Kiri province.

Table 18: The CF Statistic in Mondul Kiri Province, June 2013

No.	CF Name	CF Area (ha)	Commune	District	No. of village	CF Member (Family)	Date Approved by MAFF	Date CF Agreement
1	Phum Pou kroch	1,231	Sre ampoum	Pech Chreda	1	55	19.02.13	
2	Phum Poulung	944	Romanea	Sen Romanea	1	101	19.02.13	
3	Phum Poukrenge	678	Sre ampoum	Pech Chreda	1	82	19.02.13	
4	Phum Pouradet	1,323	Sre ampoum	Pech Chreda	1	77	19.02.13	
<b>Total</b>		<b>4,176</b>	<b>2</b>	<b>2</b>	<b>4</b>	<b>315</b>	<b>4</b>	<b>0</b>

Figure 18. The Map of Community Forest in Mondul Kiri Province, June 2013



## 2.17. THE COMMUNITY FORESTRY IN RATANAKIRI PROVINCE

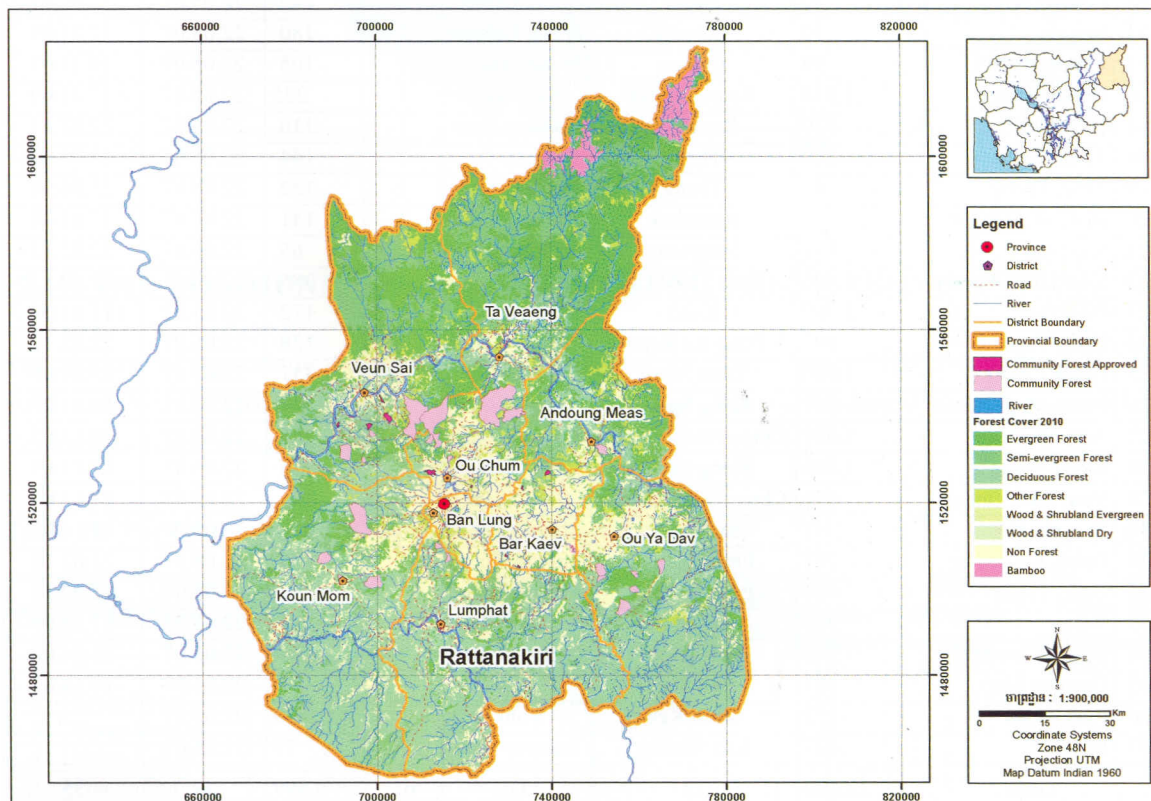
The Ministry of Agriculture, Forestry and Fisheries issued the Prakas No. 593ប្រក.កសក dated 30 September 2010, and No. 081ប្រក.កសក dated 19 February 2013 on The Establishment and Management of Community Forest area in Ratanakiri province.

Table 19: The CF Statistic in Ratanakiri Province, June 2013

No.	CF Name	CF Area (ha)	Commune	District	No. of village	CF Member (Family)	Date Approved by MAFF	Date CF Agreement
1	Phnom Roy	109	Kes Chong	Bor Keo	1	53	30.09.10	22.12.11
2	Phnom Teung Laiy	62	Lung Khung	Bor Keo	2	66	30.09.10	22.12.11
3	Phnom Kroun	20	Lung Khung	Bor Keo	1	40	30.09.10	22.12.11
4	Poum Kokpreov	119	Phnom Kok	Voeunsaïy	1	59	30.09.10	22.12.11
5	Khom Pong	300	Pong	Voeunsaïy	2	361	30.09.10	22.12.11
6	Pum Kokloak	54	Voeunsaïy	Voeunsaïy	1	77	30.09.10	22.12.11
7	Phnom Chra Phong	191	Ou Chom	Ou Chom	2	218	30.09.10	22.12.11
8	Phnom Krolach	19	Ek Pheap	Ou Chom	1	182	30.09.10	22.12.11
9	Pum Kamen	36	Samaky	Ou Chom	1	122	30.09.10	22.12.11
10	Pum Tropeng Chreas 2	636	TropeangChres	Kounmorm	1	324	19.02.13	
11	Phnom Toekchanh	85	Tropeang Chres	Kounmorm	1	262	19.02.13	
12	Kalaiy	230	Kalaiy	Ou Chom	1	120	19.02.13	
13	Yarkpoy	5,343	Poy	Ou Chom	2	325	19.02.13	
14	Veal Thmaromphlong	147	Ou Chom	Ou Chom	2	131	19.02.13	
15	Pomlaork	59	Laork	Ou Chom	1	120	19.02.13	

No.	CF Name	CF Area (ha)	Commune	District	No. of village	CF Member (Family)	Date Approved by MAFF	Date CF Agreement
16	Ondoung Phres neang	2,749	Kachoun	Voeunsaïy	5	273	19.02.13	
17	Yakaorl	3,060	Poy	Ou Chom	5	130	19.02.13	
18	Pom takorkchray	165	Borkham	Oyadav	1	62	19.02.13	
19	Tern	2,327	Tern	Konmom	5	345	19.02.13	
20	Pomloum	424	Maleck	Ordoung meas	1	98		
21	Tropeng Chreas 4	932	Tropeang Chres	Kornmorm	1	76		
22	Kachanh	193	Labang 2	Lomphat	1	147		
23	KaTieng	178	Labang 2	Lomphat	1	102		
24	Vealthomda	135	Ou Chom	Ou Chom	2	131		
25	Pril	553	Borkham	Oryadav	1	66		
26	Takokphnong	772	Borkham	Oryadav	1	93		
27	Pomdor	269	Yatong	Oryadav	1	92		
28	Pompek	187	Yatong	Oryadav	1	92		
29	Pomsous	412	Yatong	Oryadav	1	61		
30	Kalaisavong	155	PhnomKok	Voeunsaïy	1	31		
31	Kalaisapoun	113	PhnomKok	Voeunsaïy	1	59		
32	Teamkrom	803	PhnomKok	Voeunsaïy	1	82		
<b>Total</b>		<b>20,838</b>	<b>17</b>	<b>7</b>	<b>50</b>	<b>4,400</b>	<b>19</b>	<b>9</b>

Figure 19. The Map of Community Forest in Ratanakiri Province, June 2013





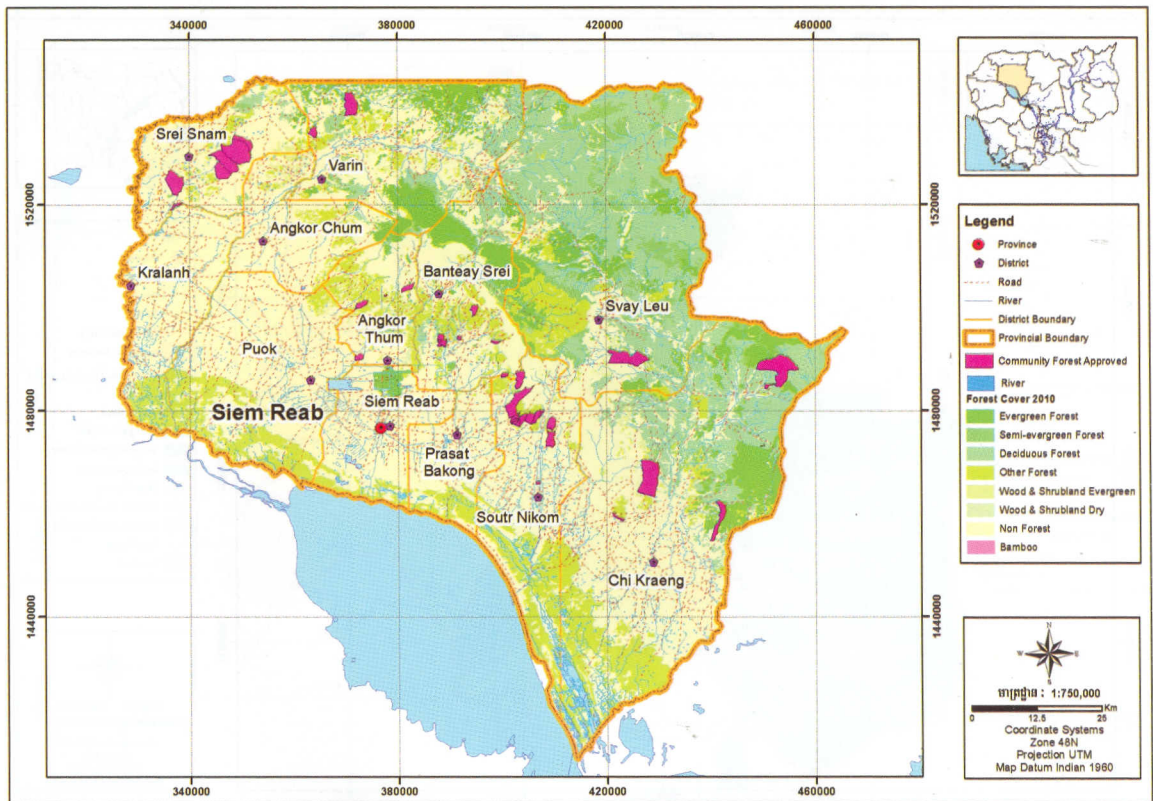
## 2.18. THE COMMUNITY FORESTRY IN SIEM REAP PROVINCE

The Ministry of Agriculture, Forestry and Fisheries issued the Prakas No. 145ប្រក.កសិក. dated 22May 2007on The Establishment and Management of Community Forest area in Siem Reap province.

**Table 20: The CF Statistic in Siem Reap Province, June 2013**

No.	CF Name	CF Area (ha)	Commune	District	No. of village	CF Member (Family)	Date Approved by MAFF	Date CF Agreement
1	Khnpouph	1,022	Khnpouph	Sothnikum	7	917	22.05.07	17.11.09
2	Bosthom	445	Khnpouph	Sothnikum	1	89	22.05.07	19.11.07
3	Popel	409	Popel	Sothnikum	5	1,015	22.05.07	17.11.09
4	Chansor Cheong	84	Chansor	Sothnikum	1	45	22.05.07	19.11.07
5	Chansor Thboung	94	Chansor	Sothnikum	1	66	22.05.07	19.11.07
6	Thnal	63	Chansor	Sothnikum	1	49	22.05.07	25.04.08
7	Chbar Lae	78	Chansor	Sothnikum	1	107	22.05.07	19.11.07
8	Chop	203	Chansor	Sothnikum	1	97	22.05.07	25.04.08
9	Chom	225	Chansor	Sothnikum	1	111	22.05.07	25.04.08
10	Kouk Teong	271	Chansor	Sothnikum	1	87	22.05.07	25.04.08
11	Beong Veau	37	Domdek	Sothnikum	2	268	22.05.07	22.02.11
12	Kreal Pong	61	Popel	Sothnikum	1	149	22.05.07	25.04.08
13	Popel Lech	330	Popel	Sothnikum	3	445	22.05.07	22.02.11
14	Steung	10	Bakong	Prasat Bakong	1	180	22.05.07	17.11.09
15	Kropae	99	Balang	Prasat Balang	1	105	22.05.07	19.11.07
16	Boeng Melea	1,514	Beung Melea	Svay Lae	1	225	22.05.07	17.11.09
17	Rumchek	330	Rumchek	Banteay Srey	1	110	22.05.07	22.02.11
18	Tbeng Lech	210	Tbeng	Banteay Srey	1	144	22.05.07	19.11.07
19	Skun/Tbeng	87	Tbeng	Banteay Srey	1	132	22.05.07	25.04.08
20	Roveang Tatum	59	Rumchek	Banteay Srey	1	141	22.05.07	17.11.09
21	Sangveuy	112	Sangveuy	Chikreing	2	65	22.05.07	22.02.11
22	Kok Thlok Lae	2,086	Kork ThlokLae	Chikreing	4	385	22.05.07	22.02.11
23	Pom Oe	2,367	Kvao	Chikreing	1	172	22.05.07	17.11.09
24	Dong Pao	697	Pong Ro Krom	Chikreing	1	128	22.05.07	22.02.11
25	Oetek Chenh	1,080	Tram Sasor	Srey Snom	2	357	22.05.07	25.04.08
26	Phnomdey	377	Sleng Spean	Srey Snom	1	447	22.05.07	19.11.07
27	AmpeovDeap	1,037	Chroy NeangNgurn	Srey Snom	1	287	22.05.07	19.11.07
28	Sleng Spean	1,794	Sleng Spean	Srey Snom	1	356	22.05.07	17.11.09
29	Yeay MeyThmey	656	Chroy NeangNgurn	Srey Snom	1	201	22.05.07	17.11.09
30	Svaychek	232	Svaychek	Angkor Thom	6	1,054	22.05.07	19.11.07
31	Preah Angcheng	207	Peak Snaeng	Angkor Thom	1	476	22.05.07	22.02.11
32	Preay Preah	16	Peak Snaeng	Angkor Thom	3	590	22.05.07	22.02.11
33	Varen	913	Varen	Varen	1	272	22.05.07	17.11.09
34	Reach Chunthul	215	Srae Kvao	Agkor Chum	1	136	22.05.07	25.04.08
35	Domrey Slap	103	Sen Sok	Kralanh	1	83	22.05.07	19.11.07
36	Prasat Cha	172	Doen Keo	Pouk	1	30	22.05.07	
37	Sanday	427	Kna Sanday	Banteay Srey	1	77	22.05.07	
<b>Total</b>		<b>18,122</b>	<b>23</b>	<b>11</b>	<b>62</b>	<b>9,599</b>	<b>37</b>	<b>35</b>

Figure 20. The Map of Community Forest in Siem Reap Province, June 2013



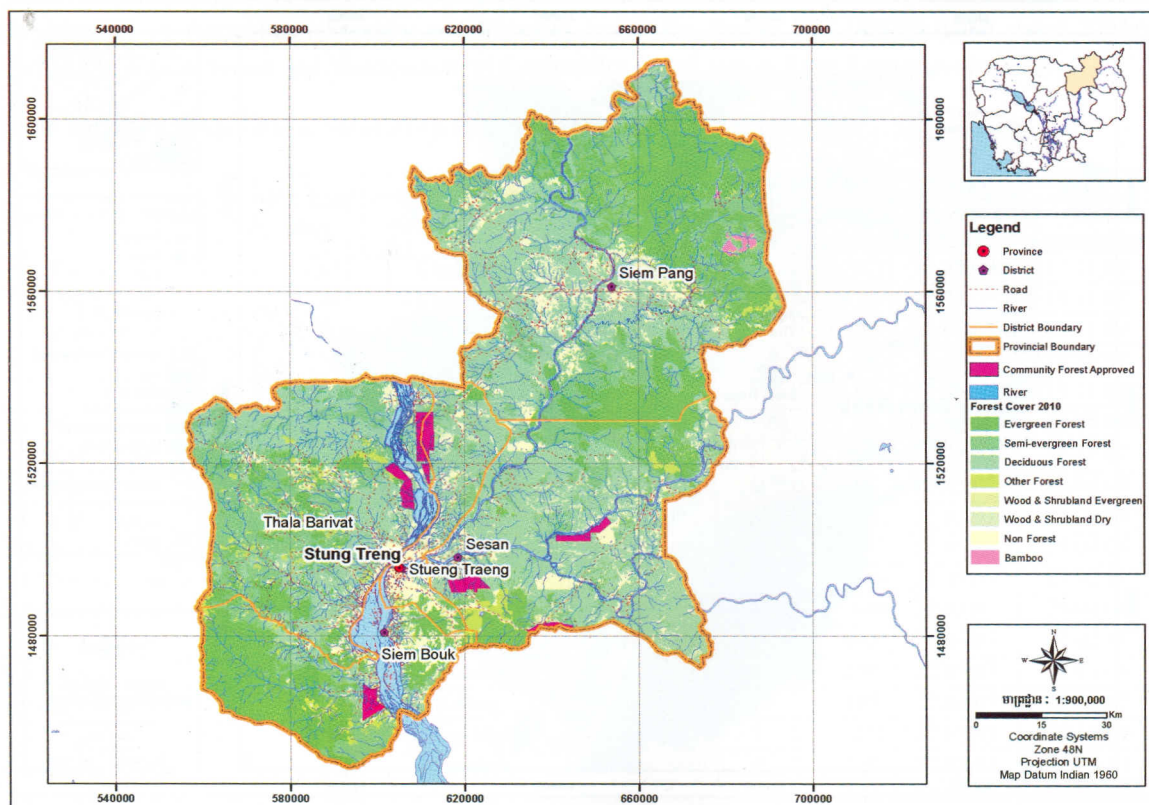
## 2.19. THE COMMUNITY FORESTRY IN STUNG TRENG PROVINCE

The Ministry of Agriculture, Forestry and Fisheries issued the Prakas No. 321ប្រក្រឹត្យកំណត់ dated 21 May 2012 and No. 077ប្រក្រឹត្យកំណត់ dated 19 February 2013 on The Establishment and Management of Community Forest area in Stung Treng Province.

Table 21: The CF Statistic in Stung Treng Province, June 2013

No.	CF Name	CF Area (ha)	Commune	District	No. of village	CF Member (Family)	Date Approved by MAFF	Date CF Agreement
1	Phum Krom	668	Preah Romkel	Thalaborivat	1	105	21.05.12	05.09.12
2	Krala Pheas	702	Preah Romkel	Thalaborivat	1	141	21.05.12	05.09.12
3	Borey Ousvay	4,383	Ousay	Thalaborivat	5	483	19.02.13	
4	Nakta Kakan	2,031	Sre Kor	Se San	2	285	19.02.13	
5	Phnom Romeat	546	Koh Sneng	Thalaborivat	1	70	19.02.13	
6	Chom Pech	2,875	Koh Sneng	Thalaborivat	3	284	19.02.13	
7	Ou Chap	2,572	Kampun	Se San	4	522	19.02.13	
8	Samaky	2,430	Siem Bork	Siem Bork	3	202	19.02.13	
<b>Total</b>		<b>16,208</b>	<b>6</b>	<b>3</b>	<b>20</b>	<b>2,092</b>	<b>8</b>	<b>2</b>

Figure 21. The Map of Community Forest in Stung Treng Province, June 2013



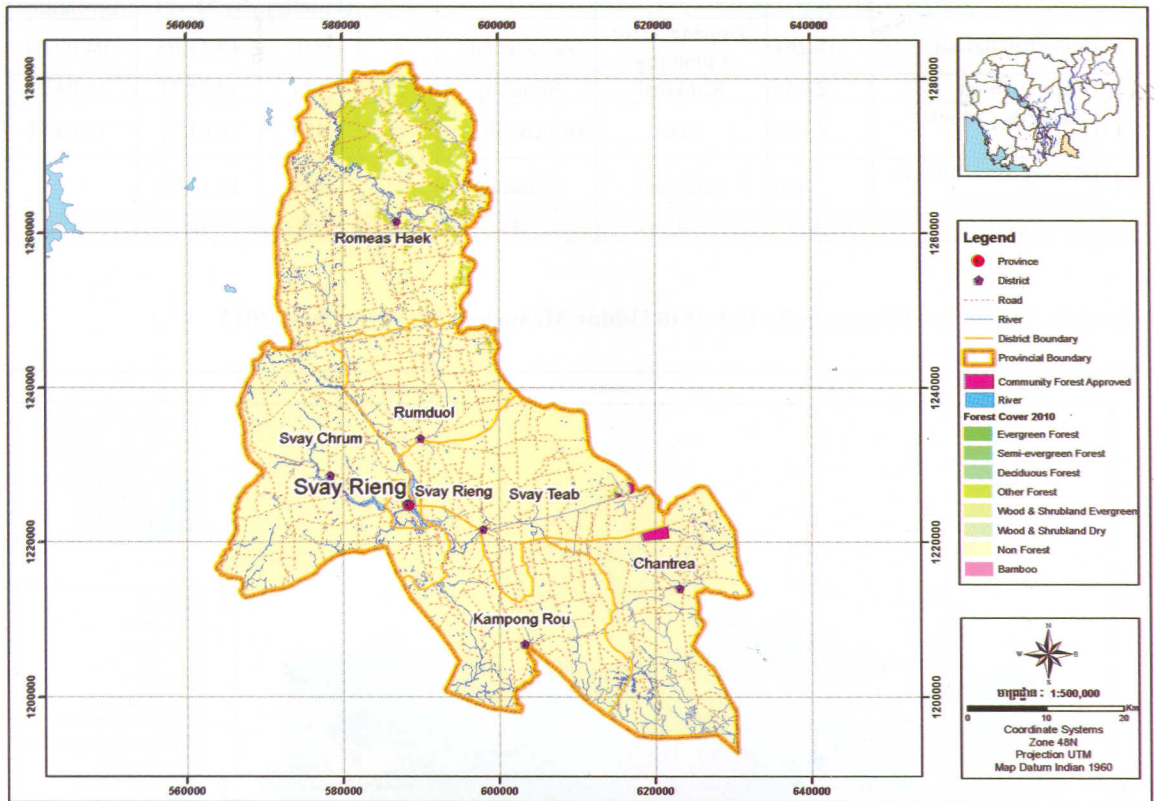
## 2.20. THE COMMUNITY FORESTRY IN SVAY RIENG PROVINCE

The Ministry of Agriculture, Forestry and Fisheries issued the Prakas No. 605ប្រកាស.កសិករ dated 15 December 2009 on The Establishment and Management of Community Forest area in Svay Reing province.

Table 22: The CF Statistic in Svay Rieng Province, June 2013

No.	CF Name	CF Area (ha)	Commune	District	No. of village	CF Member (Family)	Date Approved by MAFF	Date CF Agreement
1	Monorom	100	Monorom	Svay Teap	1	221	15.12.09	28.12.12
2	ChamKa Kon Korky	404	Bati	Bavet	5	740	15.12.09	28.12.12
<b>Total</b>		<b>504</b>	<b>2</b>	<b>2</b>	<b>6</b>	<b>961</b>	<b>2</b>	<b>2</b>

Figure 22. The Map of Community Forest in Svay Rieng Province, June 2013



## 2.21. THE COMMUNITY FORESTRY IN ODDAR MEANCHEY PROVINCE

The Ministry of Agriculture, Forestry and Fisheries issued the Prakas No. 487ប្រក្រតីកាតែងតែង dated 19 November 2008 and No. 008ប្រក្រតីកាតែងតែង dated 10 January 2011 on The Establishment and Management of Community Forest area in Oddar Meanchey province.

Table 23: The CF Statistic in Oddar Meanchey Province, June 2013

No.	CF Name	CF Area (ha)	Commune	District	No. of village	CF Member (Family)	Date Approved by MAFF	Date CF Agreement
1	Rotanak Rokha	12,872	Somrong, Konkreal	Somrong	16	763	19.11.08	04.05.09
2	Chouk Meas	383	Konkreal	Somrong	1	120	19.11.08	04.05.09
3	Oeyey Keo	960	Konkreal	Somrong	1	120	19.11.08	04.05.09
4	Rumduol Veasna	6,016	Punsay Rak	Somrong	4	371	19.11.08	04.05.09
5	Phnom Dangrek Somrek Prey Sros	1,604	Kok Kpuos	Banteay Ampel	2	223	19.11.08	04.05.09
6	Andong Bor	6,114	Beng	Banteay Ampel	8	426	19.11.08	04.05.09
7	Dong Beng	1,843	Beng	Banteay Ampel	4	300	19.11.08	04.05.09
8	Samaky	1,079	Tropeng Tao	Anlongveng	4	520	19.11.08	04.05.09
9	Oekokiri Prey Srong	6,344	Lomtong	Anlongveng	4	482	19.11.08	17.11.09
10	Samaky Songkruos Preaychoeu	4,151	Anlongveng	Anlongveng	3	938	19.11.08	17.11.09

No.	CF Name	CF Area (ha)	Commune	District	No. of village	CF Member (Family)	Date Approved by MAFF	Date CF Agreement
11	Sang Rukhawan	18,261	Tropeng Trao, Lomtong	Anlongveng	5	60	19.11.08	04.05.09
12	Roluos Thom	2,666	Konkreal	Somrong	2	144	10.01.11	12.04.11
13	Thmorda Outoek Khiv	2,025	Phao	Tropeng Prasat	4	429	10.01.11	12.04.11
14	Ressey Sros Somros Prasat Pa Ong	850	Konkreal	Somrong	2	195	19.11.08	
<b>Total</b>		<b>65,168</b>	<b>9</b>	<b>4</b>	<b>60</b>	<b>5,091</b>	<b>14</b>	<b>13</b>

Figure 23. The Map of Community Forest in Oddar Meanchey Province, June 2013

