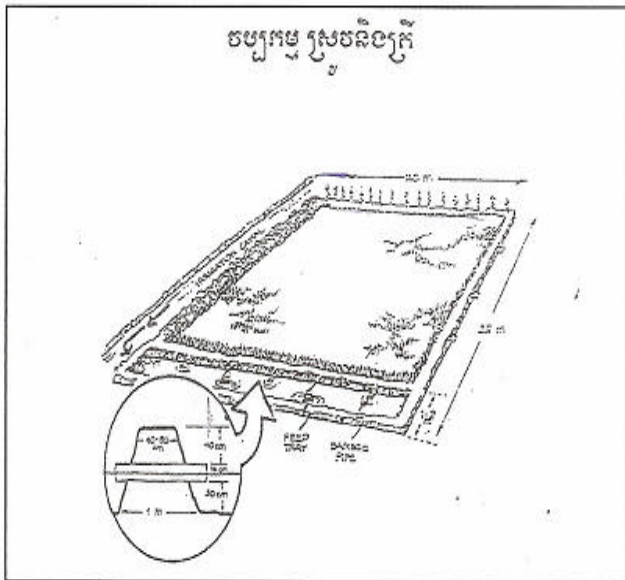


RbBhainatMedayykrSvCaeKaI

1- vb, kmp Rsv nigRtI

manngmkdI enkarGnurtpk_skmP TmbenAGaslu RtITk sabdCa RtGENg nigRtfs;)anI tI as;
 ygeKcINenAkjERS . RtI tI anH) ankrekiteT, bedayEKÉg edayKankardakcBam edaykskreT . kar
 eRbR)as; fAsW abkMatBBkstV t céRg)anbnRynU brimaNRTIEI amanenAkjERS .
 kgvb, Rsv nigRtUvapp; I TPaBedm, pl iteT, g nURtITk sab dCa RtI TIT, aby a qit nigkabsamBa@CamY
 RtGENg nigRtfs; RBmTajpI nUTipI xs; .



rbT13 bgEpscBamRtedayeFibT, ayenAxag

k- karCksamePaH

- cabepnCKenAmneBI manePogFakdMgenrdUvSa
- cBaHRTITIT, aby a RtGENg nigRtfs; samePaHRTUmanTTg 1.5m-2m nigCMA 1m -rbT11 ; .
- GacCKCaRSHragmU enAcMNP I ERskYanEdr -rbT12 ;



KINNTSKAI ENKARE-BSAMEPAH 3

- 1- eI PEMj ERS
 - 2- CksämePohenAKEngTabbMitéERS
 - 3- bBgögüCU RtUmanGgäpityagehacNas; 7 s:m
 - TikEdI hIFäkBbBgögüCU eTAsämePohRtUmanxüI RKbRkan;
 - bBgögüecj caMac, sbBgögüTikec j edm, hkSanUkMt TikEdI cg) anenAkögERS .
 - 4- CksämePohMytökERSEdI manTTög 30s:m nigCMA30s:medm, hapüRteTArksäm ePah.
 - 5- sbBgögüenRbPbcINU eygGacdaritav sENkKY nigbEnopSgenAel PIRsrbsybg .
- bEnpdm, bnByCtab Tik tamExSedkeybgminRtav RtggEngEdI dakbBgögüTikeT .



rbTB³ bgäj BIFöPaBsämePah nigdINahAtamPWS

saki viTuaI kPthinkskmp

x-kardakCkōsāmePāH

1-eBI NamanTikRkbRkanenAkōsāmePāH -TTV BITkePōg bRbT,ayerSacsRsB; Gnutpkar
dakCIsrragātōxagerKam³

-I amkmanRss; 0>3 K-Rk¼1m²

-I amkRCkRkom 0>5 K-Rk¼1m²

-I amkRkbRss; 0>5 K-Rk¼1m²

-I amkeKaeRkom 1>0 K-Rk¼1m²

2-dakChyExmpg rēBI NaEdI manTikBNēbtgmin)anyt . TikBNēbtgbBaRfamanCI
FmCatRkbRkan;-bōgtg; sMabRtEdI cBānenAkōsāmePāH .

3-viFsaRspnkarGnutp³

-)ac BrayI amksMabRtab)at eRkayeBI CksāmePāH

-dak;I amkenAkō)av rēdakvaeTAKōsāmePāHkōCMA 15-20 s:m Bēpftik

-eygGacdak;I amkecal enARCgmgēnsāmePāH

K-kardakcBān

1-dakkōsāmePāHnUkbRtITIT,abya: Tōjn; 3-4 Rkam kōry³eBI 15 éFtōnbBkardak;I amk
ngGnutp³tambTōsndtōxagerKam³

-kūRtmyk,aysMabēpftik 1m² b=10 000¼h>ta edayKpnkareGaycINbEnfn .

-kūRtBrk,al sMabēpftik 1m² b=20 000¼h>ta edayeGaycINbEnfn .

2-RbsnGnutp³amEbbcBānRchmx bTōsnenkardakcBānRtU³

-TIT,abya: 75-85°

-kab 10-15°

-RtGENg bRtts;5-10°

X-karerbctāI nigsūj

saki viTuaI kYPhinkskmp

klt nigeBl evI aenkaeGaycINP

- 1- kINtnUbrimaNcINEdI RtUeGayRtI tamry³Gegã CakEsgjeBl eGaycINmly² sMab; ExTI1 RtI100k,al kãmlyéf(GaycINI1-2Tkéd.
- 2- eGaycINBrdg kãmlyéf(BI RBk nigeBl I qç Rbshebcayac;

kINtsMal³

- 1- sMab,dlNaNsUEdI eFVtmYdgrkSakarcBaRtIt²eRkayeBl RbmU pl edayerbR)as; ERsTajmU RbshebenAmanTikI mRKbRkan;
- 2- begItE,gnUkEngmlybEnBn sMab,PaSkbRtITIT,abya nigkab -3m x 5m; edm,tkSa BCénkURtIEdI manKINPaBSMokarcBaRtenAeBl GnaKt .
- 3- RtGENg nigRtfsGacpasbT(kEng)an. vaGacrksaTkkjERS bsämePahehlyRtU bnptI cINeGaydI ya . kbRtITIT,abyaCacINIsMabRtIGENg nigRtfs; ehlyGPEdI CarKÇatIdC CartkhbRtavenACWij sämePaGacCYbnRykarcakecj rbsRtBlsämePaH.

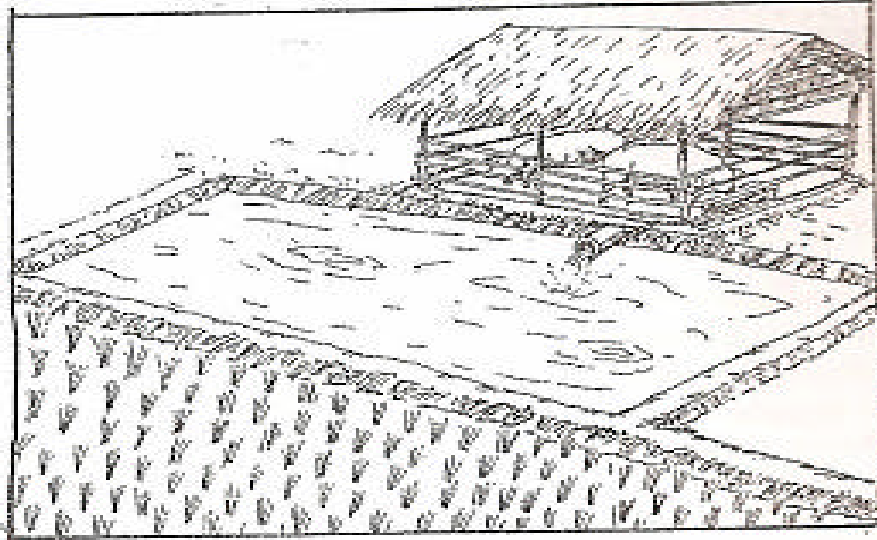
2-vb,kmpsv-RCik nigRtI

RbPBedmévb,kmpnHmanedmkNitenA RbeTsch bfin bcb(nänH)anrksayPayenA RbeTs hU Bh nigRbeTsmlychthenATbGasu. I kN³Béssénvb,kmpnH KWTVI R)akcINU eRchtamkarcBaR RCik-RtInigdNaNsUedayerbR)asnU amkstvedm,begInKINPaBdERSnaBGayeygTTYI)anTnpI xs; .

k-karsgRTgRCk

1-KMtagTmly

sgRTgRCkenAepkxs,CabPW ehlyEk,rsämePaH .)atRTgRtUamnsPaBeTeTArksämePaH ehlyKYEtRkal smg; beakebtg. RtUdakbRggbgöcj mlyedm,habarFatsINI ; nigI amkeTAKj sam ePaheBl eygl agsBatRTg .

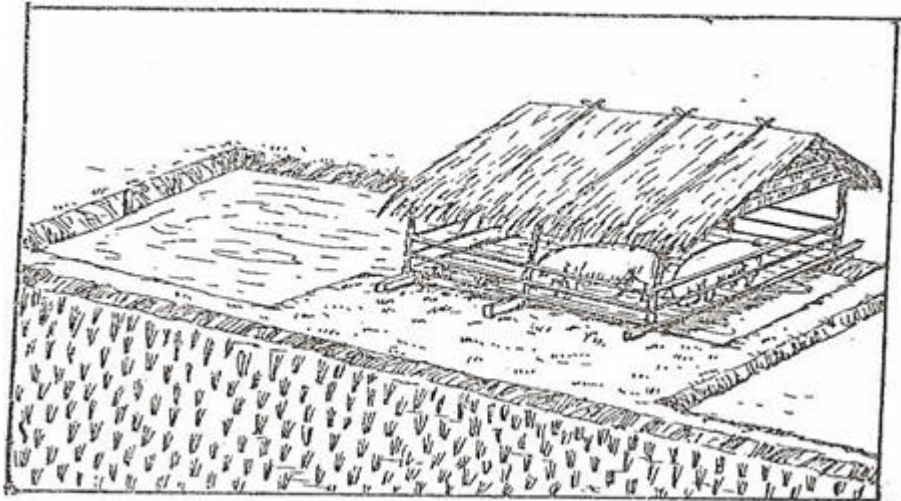


rbT1³ bəbəj Bvb, kmpsv - Rk nigrtI

2-KMagTBr

-sgRTgenABeI IsämePaHEtmj

-)atRTgrkaI edaybnhrnabb.šI edayTkrbeT, aHl medm, eGayI amkFəkeTAKj särePaHl .
eCosvagkTkrbeT, aHFəBk vaGacbnaj eGayeCgRCk manrbSeBI FəkdI .



rbT2³ karsgRTgRCkeI RšcBaRtkjRS

x-dINakkal sMan² kjkabeghRbBvb, kmp

1-kareFIsärePaHl

saki vifual yPthinkskmp

CksämePähenAepikTabéndERSmanépb70-80 s:m² -sMabkarcBamRCKmYk,al ;

-bBaP TikköjsämePährhtmanCMA 60-100 s:m

-sMabdERS TMM500 m² RtUmanbBgbgÜCU nigRckbgÜecj enAtambeNpyPabngsämePäH nigRbT,ay.

2-TitadRTgRCK

RTgRCKRtUsgenACit bBel IsämePäH . CaKMTgmanTMM1m x 1.5m sMabCBamRCK 1k,al .

3-kardakcBam

-RtI

dakcBamRtköjsämePäheBl manTikRkBRkan; . bTdsjn bMtenkardakcBam³

+ cBamEtmYRbePT³

dakcBamRtmYk,al manTjnrs; 3-5Rkam sMabépb11m² .

+ cBamRchRbePTcMka³

-TIT,abya: 75-85° -Tjnrs 3-5 Rkam;

-RtIGENbg bRtr; 5-10° -Tjnrs; 1-2 Rkam;

-kabsamBa010-15° -TjnRss; 3-5 Rkam;

-RCK

dakcBamRCKpcedah Tjnrs; 8>10 K Rk cMh 1k,al sMabRTg; 1m x 1.5m .

4-karel kPMS

-cabepmeI kPMS erkayeBl PüdERS

-TMMhPü)aterkam 1m xgeI 140-50s:m kMS; 75-80 s:m RBmTaldakbBgsmabbgÜtik

cU nigbBgsmabbgÜtik ecj BERS .

5-karerdobcll

cabepmeFVKMbgénrdUvSa edm,pt eBl evI arKbRkandI karel kPMS

6-kardakCl nigkarsüj

k-sMabkareFMMNarsUel kclngel épb1500 m² ERSRtUdakCKhmycMEdI GaRSkyeTAngCl Catdl nigRbePTdl .

saki viTuaI kYPhinkskmp

-Gyer: 5-10 K&K

-15-15-15 3-4 K&K

-bnBynUKMt bërmaNénkareRbR)as,CeI bERS eRkayeBI daMSURC .

x-bgÜCII amkstK&K² cU eTAKÜERS .

K-cabepmsÿeRkayeBI erobcM nigkardak,CRTab;)at .

7-karebkMhPW

k-eRkayBIsÿ)anmyExRtUebkMhPW 3-4 kEng RtgkEngsämePaH edm,eGayRtD)anpäs;TI
cU ERSrkcMI.

x-EFTaM&S;Tik 10-15 s&m nigbeghK&S;TikrhIdI; 20-25 s&m bnabBIsnÿEbKkm<
CaGtbrma .

8-karbmU pl

k-RtI

RbmU pl RtF&I bnabBcBañ)anry³eBI 120 -150éfFedayeF&karbgÜT&ecj BIsämePaH .
rkSaT&RtIt&² s&abkarcBañenArdUeRkay .

edm,rkSaT&RtIt&denHeyÿgRtUCKR&S&M&odakRtIT&I,abya nigkabsamBaD I manT&M
3m x 5m x 1m edm,pl ;I Te&BeGayvaBgehÿ RtUÿkcitF&kdakÿÿkarcBañB&ssk&RtI .

x-RCK

-I kRCKeRkaycBañ)anry³eBI 6-8 Ex

-ekas bekorecj kaksIN&sr&ag&I manenAkÿRTgRCKeRbR)asCaC&M&bdM&N&S&U .

3-vb,kmpM R&V-bg&R

T&Ed I manenAt&N;tamQ&ÿsm&T K&CarCneT,ÿkÿÿk&M,ÿgeBI Ed I manT&C&harx&sb&dtB&sm&T .
enArdUR)ab&PaB&RbCaF&mtax&S,Cag 5 PaK&Ban; eh&tenHval ERS&CaerChRtU)anT&kecal edayK&pankardab&M .
enAkÿExEd I manF&keP&ÿg Cat&RbRtU)an)atbg; d&denHdM&N&S&U&Gacda&M)an . enARbeTseVotNam&sk&r
Ed I rsenAt&N,Q&ÿsm&TPaK&xagt,ÿ manC&vPaBr&senAx&Stex&SayCag&ks&krEd I rsenAkÿt&N;T&ksab
d&ch&I RbB&K&skmpM&N&S&U&CamÿÿkarcBañ&bg&R&K&v&F&E&t 1 Kt; s&ab&begh&C&vPaB&ks&kr&enAt&amQ&ÿsm&T .

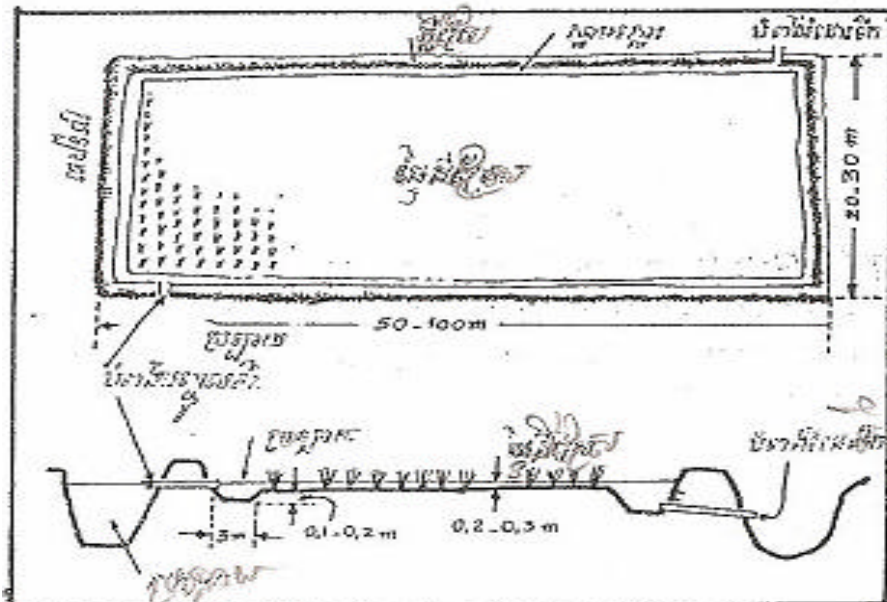
saki vifual kPthinkskmp

kareCserisTltad³

- val ERSKYenACit sly Tendb=ERBk
- eRCiseriskEngTmab nigTlmMtd l p n edm, gayTTV ykTkköjeBl manTkkCtharxsBlsm&T.
- eCosvagnUdEd l manCatGaslt sll patxodj.

karel kPWnigCkRbT, ay³

- TmktERsBl 1 000-3 000m²
- RbT, ayenAköERSmanTTng 2m-3m CMA 0.8 m-1m Ed l GacerBR)asGsépbBl 10 -20 °én dERsTaldmU .
- kMtkkBsPRsyagehacNasköGaymankBs; 20 s mxsCagkMtkkBs; TikCtharCaerogral qäM
- dakbBgbaP TikBl 2-3 nigbBgbeBaP TikmlycMh -mkkatbBgmin tCag 20 s m; eFBedmdj bedmeQl . bBgbaP TikRtU)aneKdak, mbBaP TiköjERS enAeBl Ed l TiksmTeCar bBg; beBaP TikeRbIs mbBRgk TikBkögRbT, ayénERseBl ebkclh .
- bBg;TaldBrbePTenHKYmanRkT, asINaj karBarkMGaystéERG -stVlogá, cu)an .
- RKbeTaeI épénRbT, ayköERSedayerbEmkeQl brkÇatikMak . l . enAtambeNpyénRbT, ay KYmandak, sM bönarkarBarBlkar l t cab; .



rbTt1³ KMsbnBy sánPaERS

saki vifual $\frac{1}{2}$ Pthinkskmp

dgstén kardakbgárcBam³

-dak kbgárc Tik sabEdl manTihRTIs²bnpc nigmankM abj l enAkögkMt BI 1-2 k,al $\frac{1}{4}$ 1m²-kth
bgárcKmanTijn,yagticBI4-5 Rkam $\frac{1}{4}$ 1 k,al ;.

-dak kbgárc enAkögERserKayBI s³)an 10-15 éf η

-kbgárcRtUeRCiserIsTihbm²Ka nigx η kas η habpgEdr .

kINtsMal ;³

1- ebsitCadg η stbgárcel BI 1 k,al $\frac{1}{4}$ 1m²enaHkarp η cINRtUetmanCacaMaceh η Tih η pkT,aén
RbT,ayB η z η Wj ERsK η EtmanTihM IsBI10° énép η ERS .

2- ebsinBmanRbPBTikshabeFKarp η s η b η ET minRtUdakbgárcBamGayel IsBI1k,al $\frac{1}{4}$ 1m² eT.

karp η cINI³

-bgárcGacs η cINFM η catEdl manenAkögERS CaB η ssERSEdl mandakCII amkstV η ekMisp

-cINEdl RtUpp η eGayman³ knk/ RKabGgá/ sacd η s η / edmdM,úeQV emSAeBat/ s η kk η m/
s η kkbgárc/ eh η ngemSARTl .

-cINp η eGayCaerogral éf η enAkögkMt 5° énTijnbgárc -ebK η ndakCII amkstCamm η ; enAkögkMt
2-3° -cb η h η karcBamEdl mandakCII amkstCamm η ; .

-cINEdl RtUdakRtUl ayTikshCad η MU² r η dakeT η el IfascINI

-kareRbR)as;fasdakcINI K η dm,lgayRsv Rt η Bhitú η cINI bgárcRtUkarCacaMac; nigeCosvagkarEdl
nabGayRkxk;Tik .

-dakcINI2dg $\frac{1}{4}$ éf η dak; $\frac{1}{3}$ énbrmaNsr η ok η geBI Rbl m eh η ycINenAs l ; $\frac{2}{3}$ dakenAeBI
l η .

-Rt η Bhitú η kardakcINCaRbcaMedm,kINtbrimaNcINEdl bgárcRtUkarCacaMac; xagerKamenHCarb
m η ay η INIs η abkarcBambgárcenAkögERS³

k>5° knk; begGgá b η Kabc η Ggá

x>20-30° dM,úeQIb η INkRKabeBatkn

K>20° knk;emSARTl k η TCs η kkbgárc b η kakRKab;l η x η

saki viTuaI kYPhinkskmp

Ex		1	2	3	4	5	6
5°	karpl cINIsMabépl100m ² -K:Rk;	0>5	0>6	0>4	1>0	1>7	1>5
2-3°	karpl cINIsMabépl100m ² -K:Rk;	0>3	0>4	0>5	0>6	0>8	1>0

karKarBarstcég ³

stEdI sbgArCaGaharman ³ RtIsMRT/ RtITIT, abya/ RtrS; ehlyngRtERBepSg² eTotEdI cab; bgArSdCaGahar . karSbMaj BstcéRgGackatbnRyThpI rbsbgArYagxéU .

mneBI dakbgArCBaRtUGnutpTanrebobdtxagerkan ³

-hal dERSeGayS^U ehlydakK^UarenAk^UKMt 10 K:Rk ¼ 100m² GacdakBI15-20 K:Rk sMab; dEdI manCatGasItSul pat .

-El gstVaclU eTAK^UERSCaerChéF^U.

k^UKM,geBI énkarcBaR ³

dakmgk^URbT, ayénERS edm, cabstV ItcéRg -sbgAr; EdI bmbgsbgAr .

karKbRkg nigEFTaM ³

-karposb^UTik K^UakarSMan; edm, pl GksEsn eTaeGaybgAr nigposb^Uecj nUPaBRkxKEdI manenAk^UTik rebobenHKYEtGnutpGay)an 2 dg ¼ 1Ex . ktpclUgEfmeTotK^UWkRtU)aneKposb^U eGaySmRsbstMabbgArI tI asFMat;)anqabrH^US .

-karposb^UTikGacbeghpgEdrnUKMt ebhas; enAk^UERS CaBesseTaeI RbePTdGasItSul pat .

-P^URskb, C^US^U nigS^UatCaerogral p^U

-bit^Urn^UapmenAtamP^URseGayCit

-edm, karBakarh^UerCaHTik^Uecj

-RtItBhitüCarbocA^UTaeI sMaj enAk^Ubg^Ug^UbcU nigecj .

karRbmU pI ³

-eybgGacRbmU pI bgArBI5-6ExerKayBéBI RbmU pI RsUr^U .

-ebkclm^UbgbeBay^UbBa^UTikEdI enAep^UkTabCageK edm, BRg^Uval ERs nigRbT, ayGmP^U

-edRbmU erIsbgAredayédenAel épERS nigERbS^UMaj GIsenAtamRbT, ay .

-RbmU pI EtbgArF^U -F^Uag 15 Rkam¼1k, al ; c^UBaHbgAr^Ut²RtUdakcBaR^URtomcBaR^Ubnp.

saki vifual kypthinkskmp

cINaM³

-bBaibogartit² CablaneTAcBaikogahab)a: -es,mgcBaikobogar! edm,rkSabogarsMabcBaipenA
eBI bnpbBaibogarfM eGay)anqabeTAeGayGikEdl RtUkar brkSavaTkenAkogTkkk eFiyagenHGaCrkSa
bgareGayenARssdEdl .

karerobcMbhlyngkarsijRsv³

-eRbR)asBCRSUfji bBCRSUKogRsk karsijKVEteFET,genAeBI Edl CatERbomankMtTabCag
5PaKBan;.

-PönigraseGay)anm:tct;l #nongsbj

-sijBI10-15efQRkayeBI sabcbBaHBCfjng 30-40efQRkayeBI sabcbBaHBCogRsk .

kardakCI³

-dakCGamij hnsil pat 50 K&rk nigCil amkstV5etankogmyhicta mmeBI PÜ

-dakCGyer: bMreI kT2 cMh 50 K&rk

karkMatsttEg³

-minGacerbfalsM abstV it b#falsM abespeTAKogRbBzenkarcBaibogarCamYdINaMSU)aneT,ly .

-eRbR)asBCRSUEdl Fnngstlmacetat

-Edl gTaFMyry³eBI 1Excll eTAKogERS edm,eGayslsttEgGahar BessBBkmmac -mmeBI
dakbgarcBaip! .

cINaM³

enAkogkrNEdl minGaceCosvag)anBkareRbfalMmenah minng)aj falygRtUBRgTkkogERseGay
Gs;edm,eGaybgarrtcll eTAenAkogRbT,ayry³eBI BI3-4efQj

karcBaibogarenArdVR)adl³

-edmcak nigedmdogbgaj eGaydogfatMnenahmankMtCatERbticCag 10 PaKBan; nigedlmekgkag
bBaReGaydogfatMnenahmankMtCatERberchCag 10 PaKBan; .

-kogM,geBI enrdVR)adlEdl kMtCatERbxssmin smRsbshdbdINaMSU l t l aseybgaccBaip
bgareEtmymbaNÄH .

saki viTuaI kPthinkskmp

-ekGacBanbgár Tik sab)anebsinCakMtCatèRbminxS;Cag 10 PaKBan; . KMagénkarcBanKVa
RbhakRbEhI KánkgarcBanenArdUvSsaEdr . enAeBI EdI kMtCatèRbxS;Cag 10PaKBanbgár Tik sab
ngéTACaRkhninGacI tI as;)aneT .

-bgáexa nigbgáreck -bgár TikéRb; GacRtU)aneKcBanKjERseBI EdI kMtCatèRberch 10 PaK
Ban;enAkjrdUR)akj .

k-dgsbténkardak;cBan 1 k,al $\frac{1}{4}m^2$

x-TikMhbgárRtUdak; 2 Rk $\frac{1}{4}m^2$

K-kMténkarpl cINI 2-3° énTjnbgár

X-rbmn;cINI³

-knk;bæggá 50°

-emSARTV kMtckbm b=kakRKab;I gxtj 50°

g-eBI evI aénkarcBanBI5-6 Ex

c-KMagkargarepSg²eTot KbhakRbEhI nigkarcBanbgár Tik sabEdr .

4-vb,kmßSV-RtI nigTa

deFIRsmancMh 3 hicta dak;TayksaccMh 40 k,al kjmlyhicta nigRtI 10 000k,al
kjmlyhicta .

k-TMjbecReTs

enAeBI PèRScael lgerKayRtUdakCII amkman; b# amkRCK CkMskjgkMt 20-30 K-Rk
 $\frac{1}{4}100m^2$ nigCII amkeKa I amkRkblkjgkMt 30-40 K-Rk $\frac{1}{4}100m^2$. eRkayBlSnj)anry³eBI 10-15
éffcmkTikKjERscabepnfá nigrkSaTik kjERskEnøEdI rak,CageK manCMAYagtic 10 s#m eygykkh
RtEdI manTMM10-15s#m ykeTAEI gkjERsehlyngbeghrhUdI kßS;TikKjERS)anCMA 25 s#m
eGayRsbng eBI CamlysnjEbkKm&aGtbrma .

-kURTBcmRbEI gRtUeFkarpSaMhAkjha)æGay)an 10-15 éf¶

-kURTEdI RtUykmkcBanmanBORTbjá 40 ° TIF,abya 40° nigRtkabsamBa020°

saki viTuaI kPthinkskmp

-eRkayBdakarRtrCmk)anry³eBI 2-3 éfñrCmkeygykTa EdI manGayu30 éfñkEI g
bBaP eTAKgERSerogral éfñ.



rtT1³ karcBaTApMamyRsv

x-karEFTaM

-Caerogral éfñygrtUedfBnitüemil CMij PRRskarBarmineGayTikhdecj

-mnngeFKar)aj; fñMmsM abstV t RtUbgñTkecj eGayGsBkñERSedayeFñyagNaeGay
RtcHeTAKgRbT,ayTajGs; . kñry³eBI enaHTaminGacRbEI gclU eTAKgERS)aneT,ly . eRkayeBI)aj;
fñCry³eBI BI2-3 éfñTbBaP Tik eTAKgERSvij eGay)ankMtdtedmvij .

k-karRbmU pI Rtl

eRkayBRbmU pI RsvrCeybgcabepñ bgñTkeGayRtcU eTAKg kñRbT,ayedm,bFKarRbmU
pI RthmngcabepñPñraseFñRsmpeTot .

pI Rtcab)ankñ1qññ1hicta-mlyqñFñRS 2 dg;

-RtkabsamBa0200 K-Rk

-RtITIT,abya 300 K-Rk

-Rtbja 400 K-Rk

-Rtbk;RtRkaj ;RtGENg >>>80 K-Rk

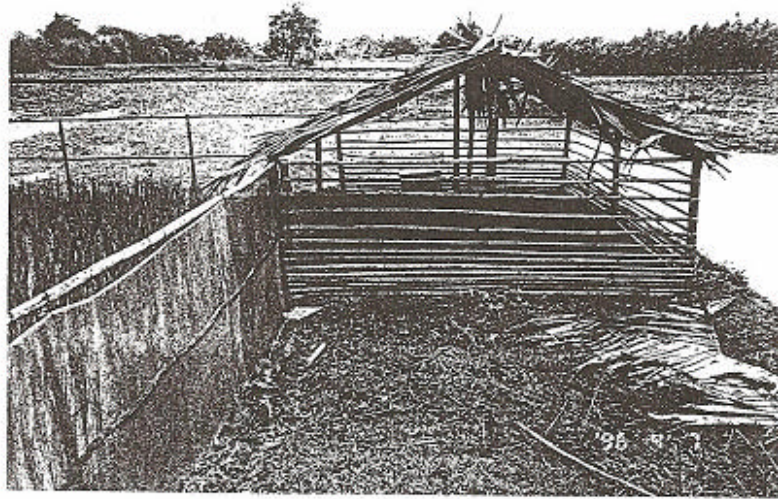
X-GtñbeyaCn_

-RtITIT cñNedaypñ nigRbeyal Bll amkTa

-RteFñGaydERSFñRsvl tI as;l Rbest

-RtingTasbstV tEdl bMaj dNARSU

-pl RsUekhet, gxs; .



រូបភាពទី ៤ : ទ្រុងសម្រាប់ទាញទឹកចេញពីស្រែ ក្នុងករណីពេប្រពៃនទាទាំងថ្ងៃទាំងយប់



រូបភាពទី ៥ : ទិដ្ឋភាពស្រែសម្រាប់ពិសោធន៍ប្រព័ន្ធ ទា-ស្រូវ