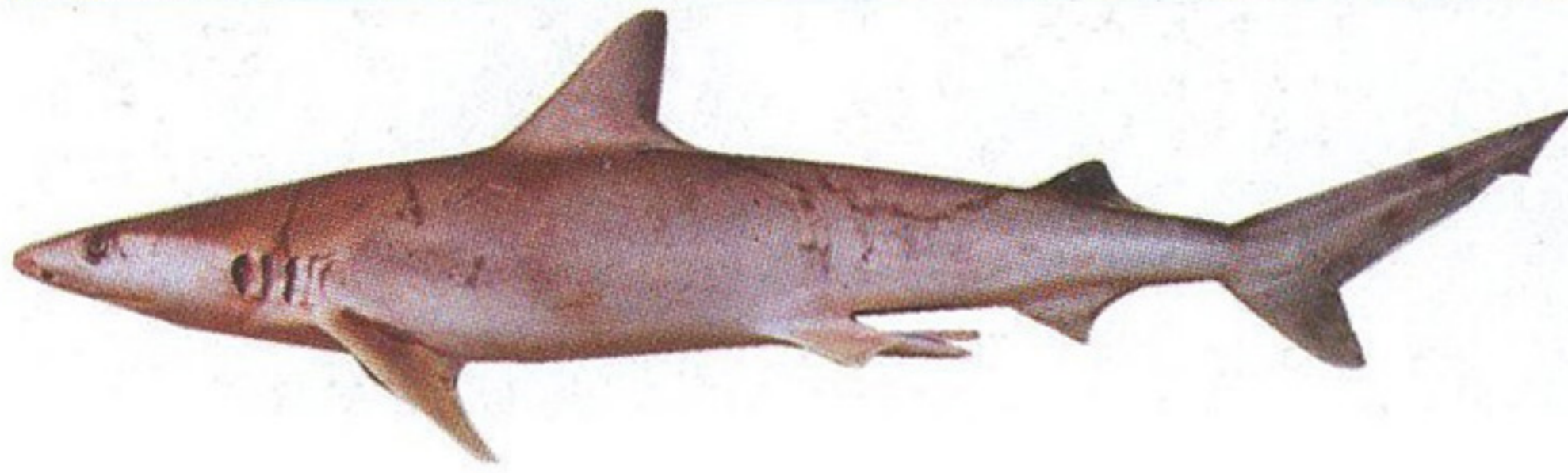
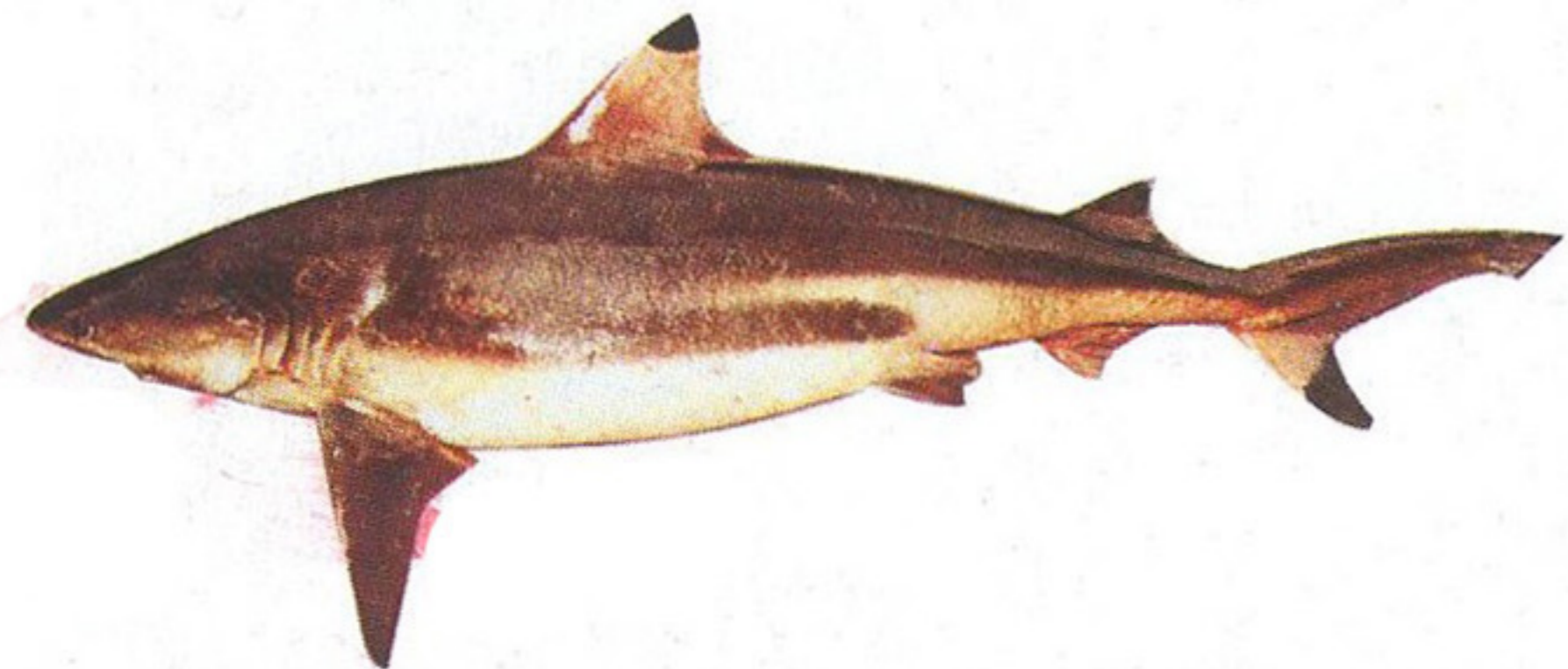


ប្រភេទត្រីសមុទ្រនៅព្រះរាជាណាចក្រកម្ពុជា
MARINE FISHES IN THE KINGDOM OF CAMBODIA

អង្គ្រូង CARCHARHINIDAE



ត្រីមស *Carcharhinus dussumieri*
Whitecheek shark (Max. 75 cm)

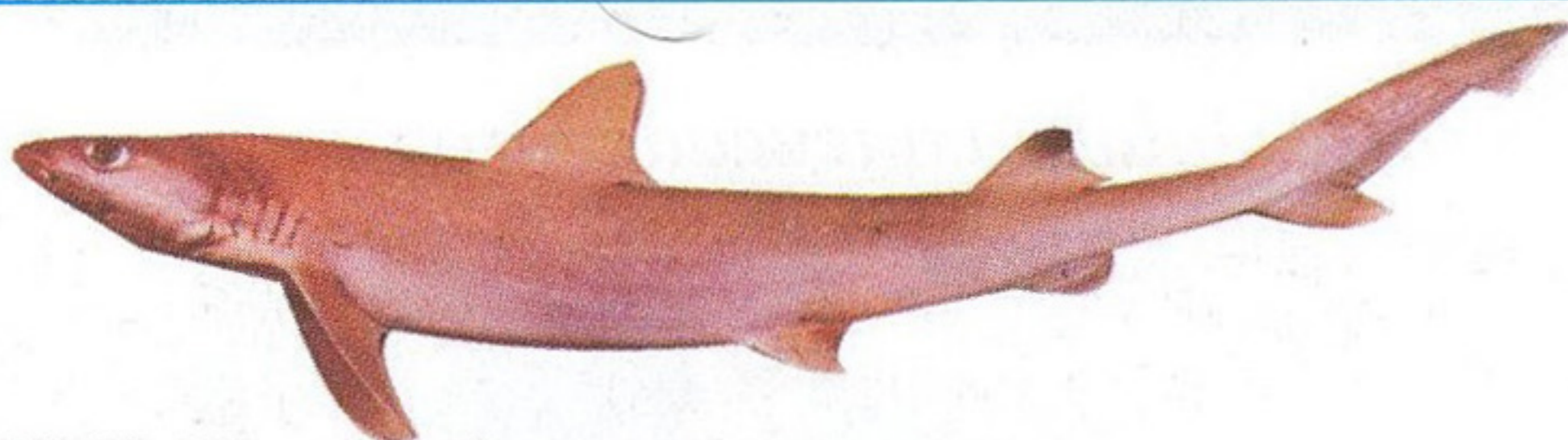


ត្រីមព្រុយខ្មៅ *Carcharhinus melanopterus*
Blacktip reef shark (Max. 120 cm)



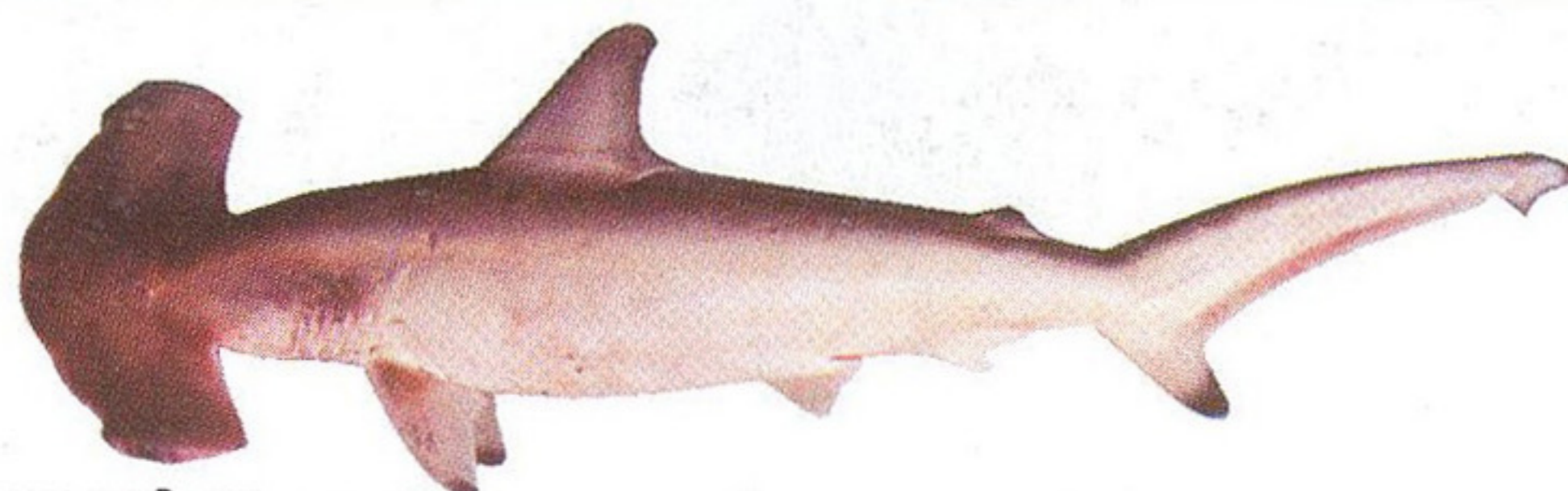
ត្រីម *Carcharhinus sorrah*
Spottail shark (Max. 58.6 cm)

អង្គ្រូង HEMIGALEIDAE



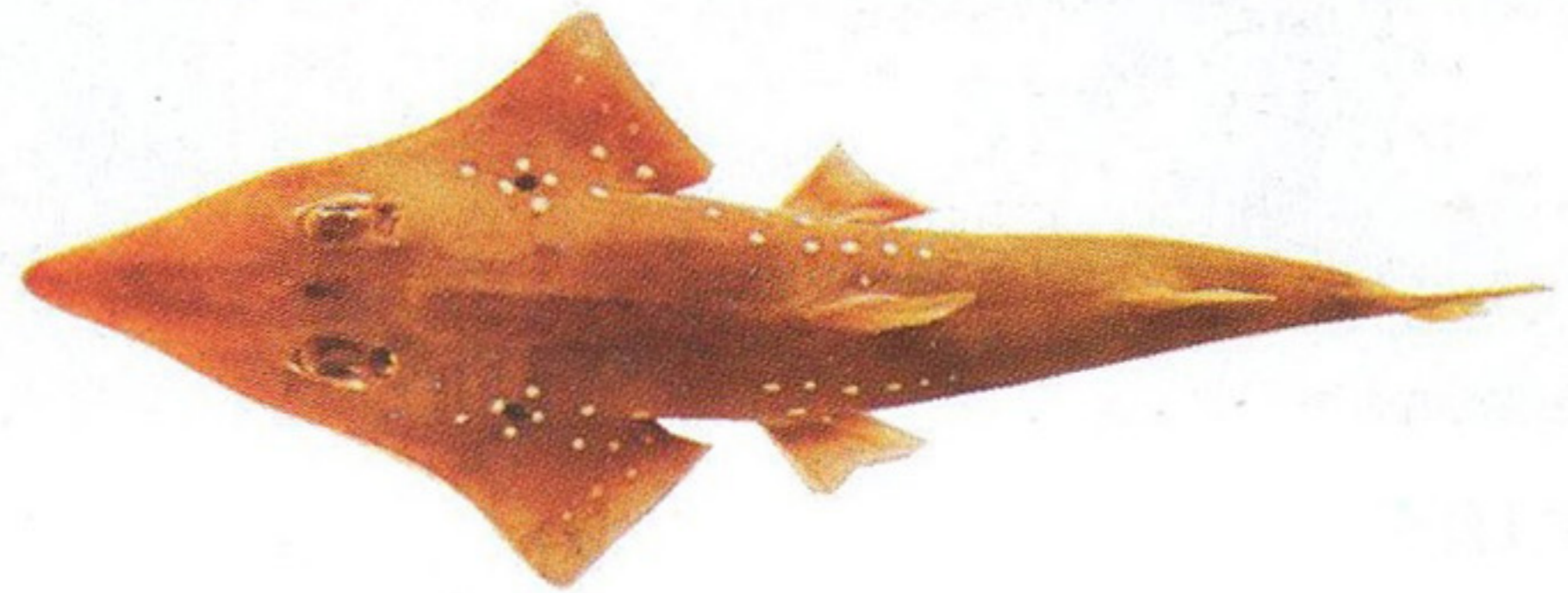
ត្រីម *Hemigaleus microstoma*
Sicklefin weasel shark (Max. 55 cm)

អង្គ្រូង SPHYRNIDAE



ត្រីមឯក *Sphyrna mokarran*
Great hammerhead shark (Max. 49.5 cm)

អង្គ្រូង RHINOBATIDAE



ត្រីមគ្រួច *Rhynchobatus* sp.
Whitespotted guitarfish (Max. 47.2 cm)



ត្រីមគ្រួច
Rhynchobatus sp.

អង្គ្រូង ORECTOLOBIDAE



ត្រីមគីង្កក់ឬត្រីមឆ្លូត *Chiloscyllium griseum*
Grey bambooshark (Max. 49.1 cm)

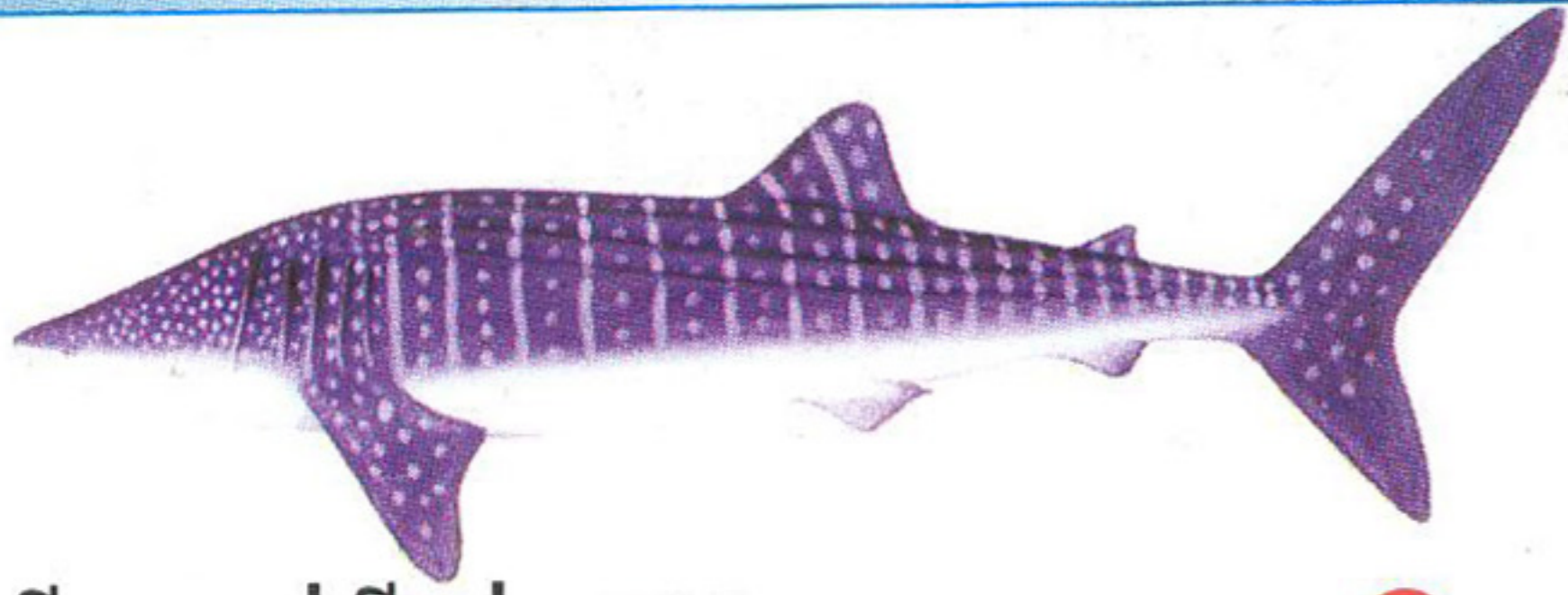


ត្រីមឆ្លូត *Chiloscyllium punctatum*
Brownbanded bambooshark (Max. 71 cm)



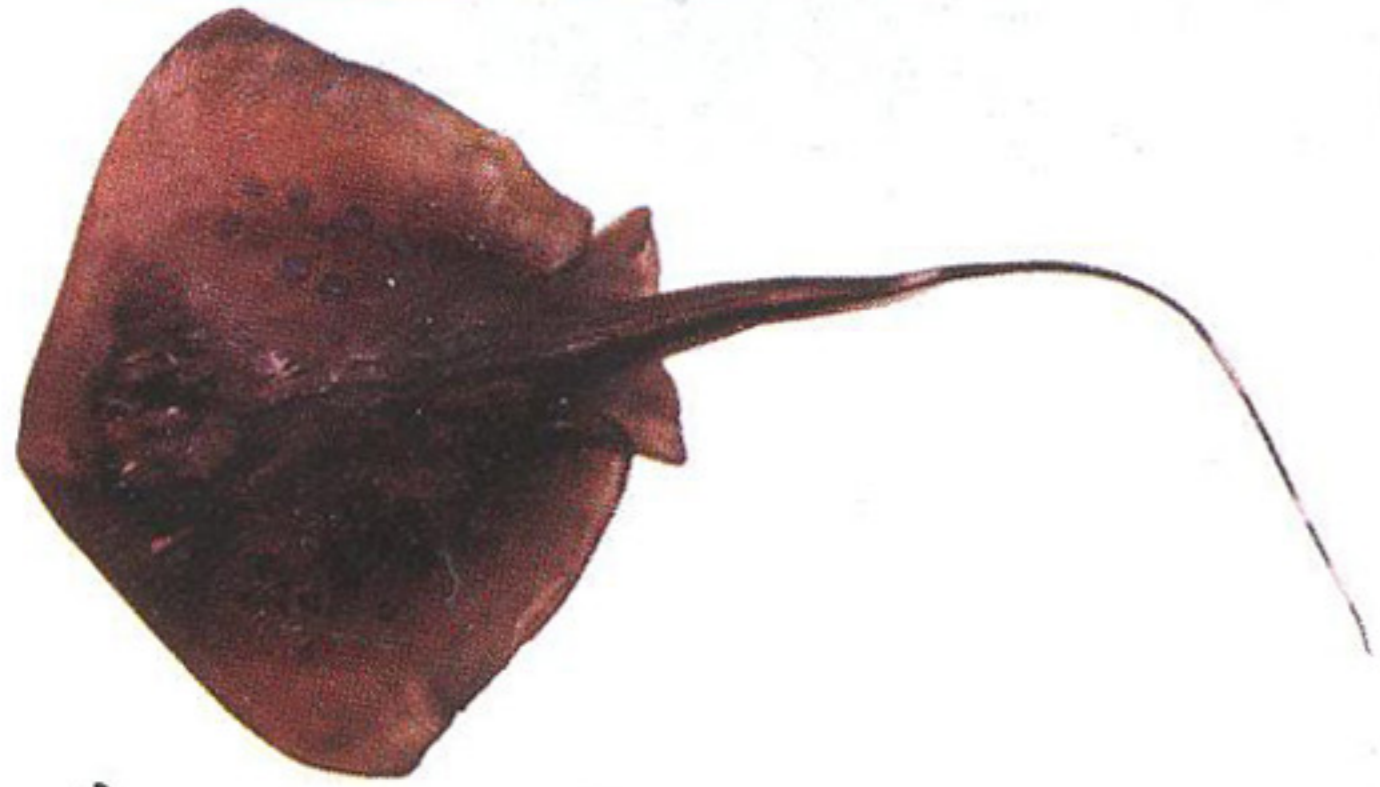
ត្រីមខ្លា *Stegostoma fasciatum*
Zebra shark (Max. 32 cm)

អង្គុះ RHINCODONTIDAE

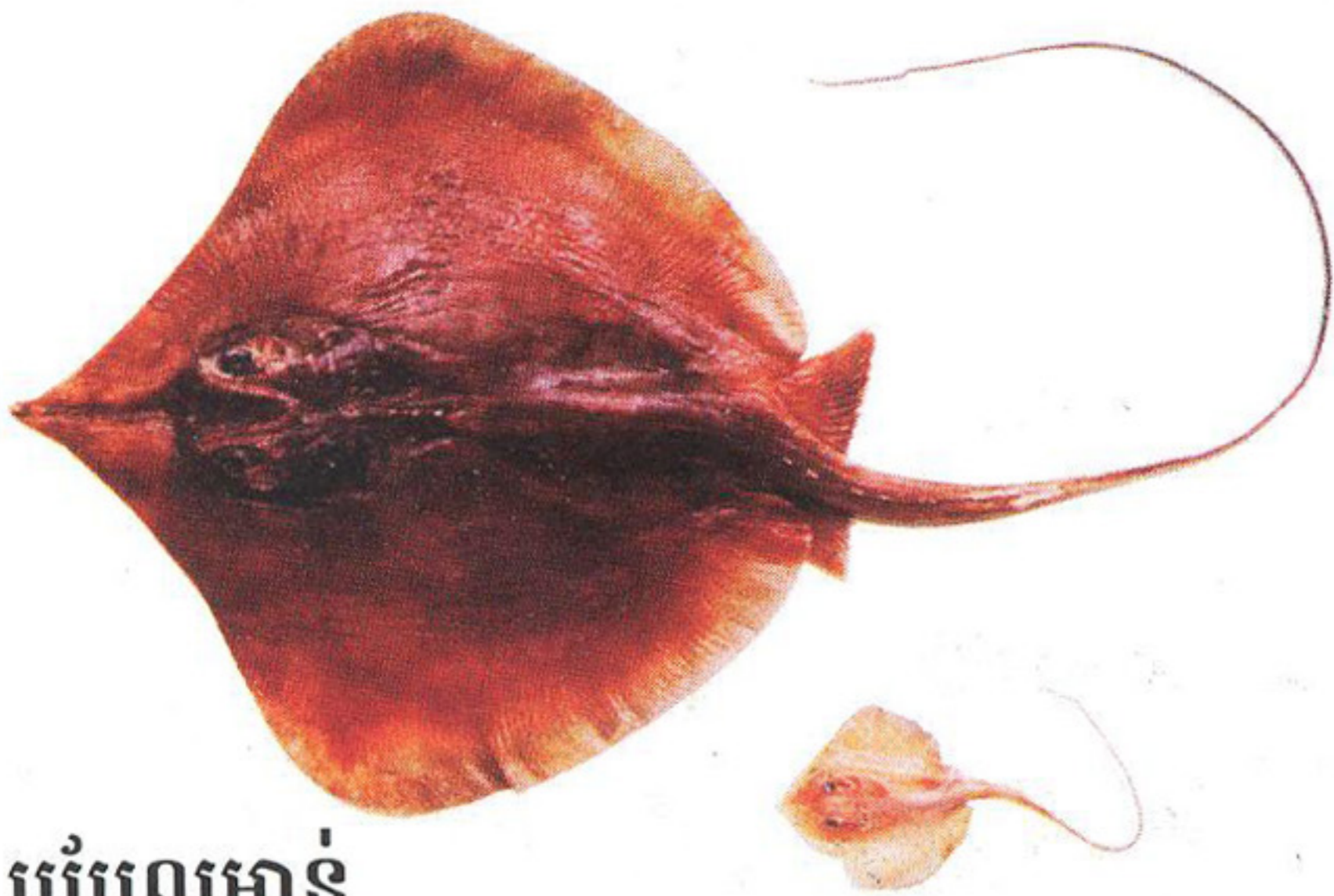


ត្រីបាណន់គីង្កក់ *Rhincodon typus* ③
Whale shark

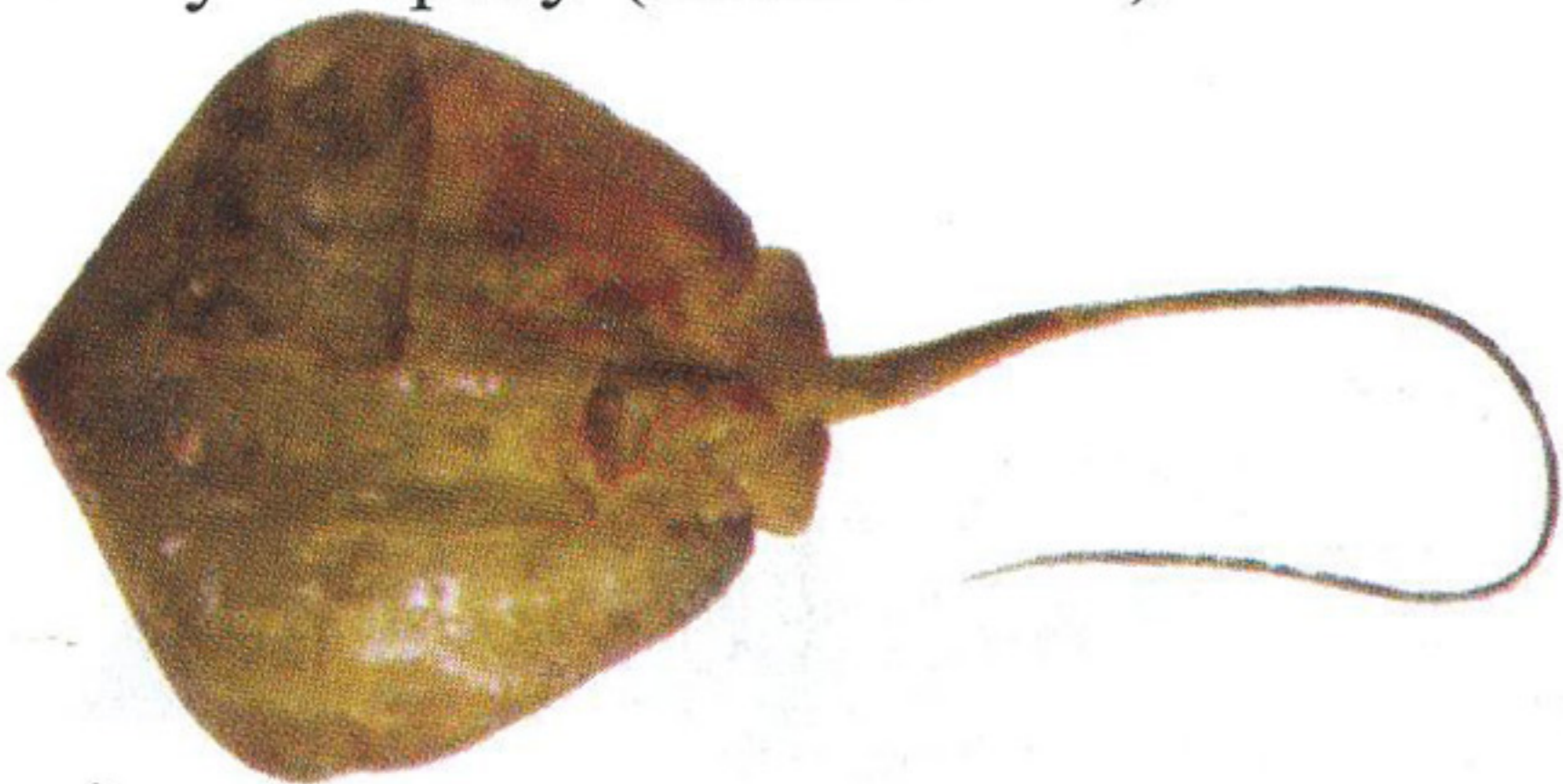
អង្គុះ DASYTIDAE α



បំបែលក្រឡាត *Dasyatis kuhlii*
Bluespotted maskray (Max. 15.3 cm)



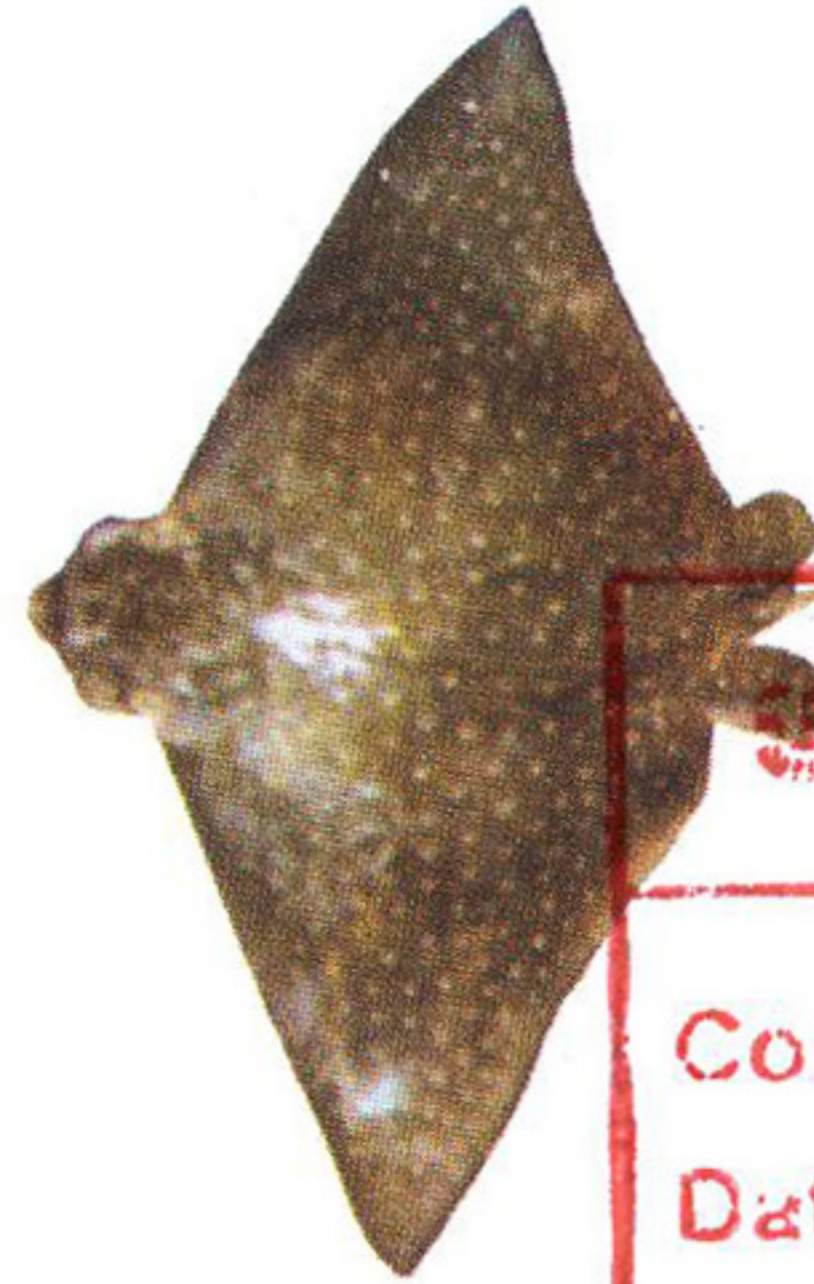
បំបែលមាត់ *Himantura imbricata*
Scaly whipray (Max. 18 cm)



បំបែលយាន *Taeniura lymma*
Bluespotted fantail ray



បំបែលខ្លែង
ឬ បំបែលអកក្របី
Mobula japonica
Spinetail mobula



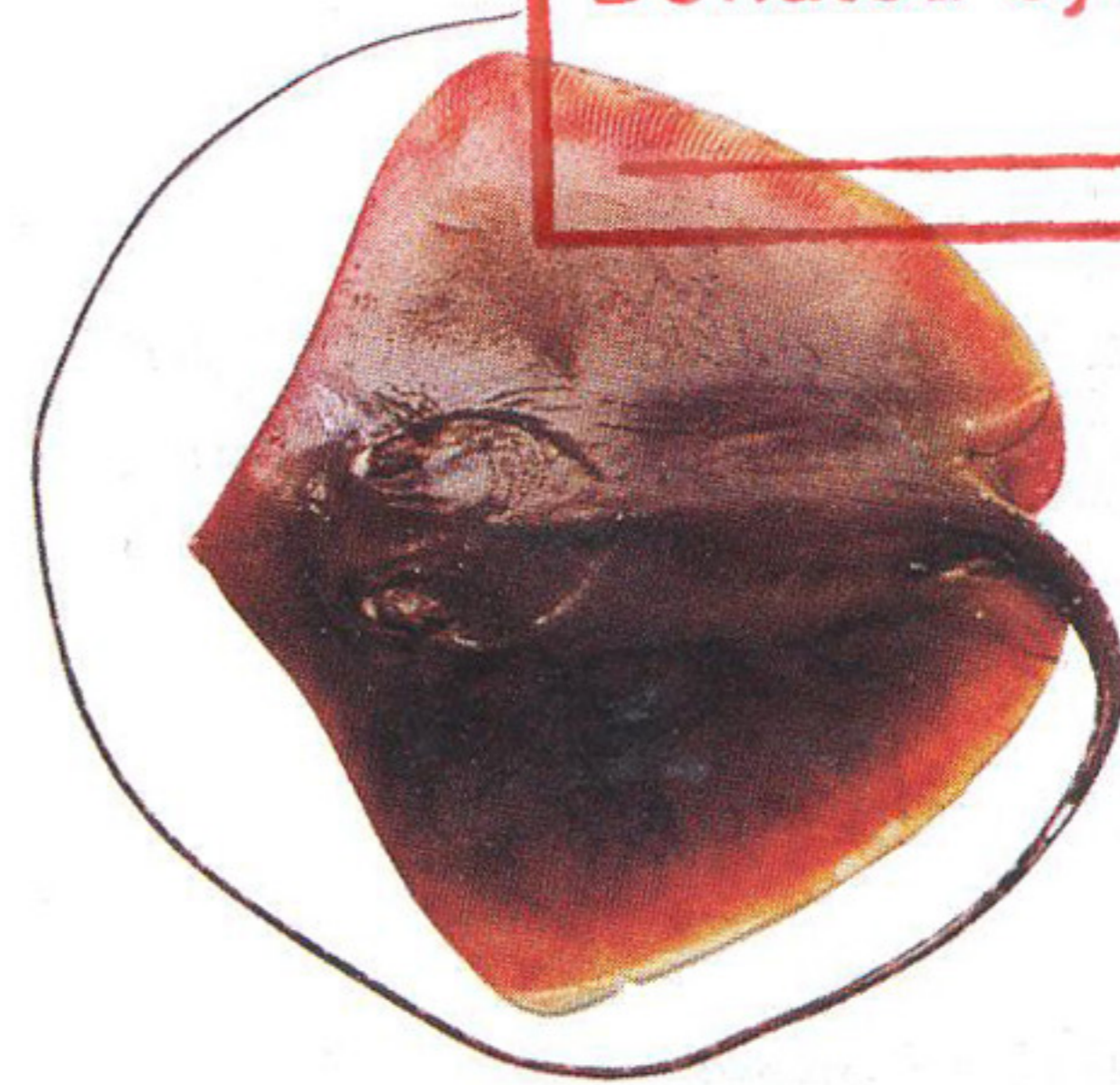
បំបែលអក
Aetobatus narinari
Spotted eagle ray

អ.ព.ជ.ក AIDOC

Code: _____

Date: _____

Donated by: _____



បំបែលសាច់អុជ *Himantura gerrardi*
Whitespotted whipray (Max. 17.2 cm)



បំបែលស្ពាន់ *Himantura* sp.

អង្ស្យ MEGALOPIDAE

♂



ត្រីព្រុយវែង *Megalops cyprinoides*
Indo-Pacific tarpon (Max. 35.2 cm)



ត្រីគូន *Hilsa kelee*
Kelee shad (Max. 17 cm)

អង្ស្យ ALBULIDAE

♂



ត្រីបេក *Albula neoguinaica*
Sharpjaw bonefish (Max. 20.1 cm)



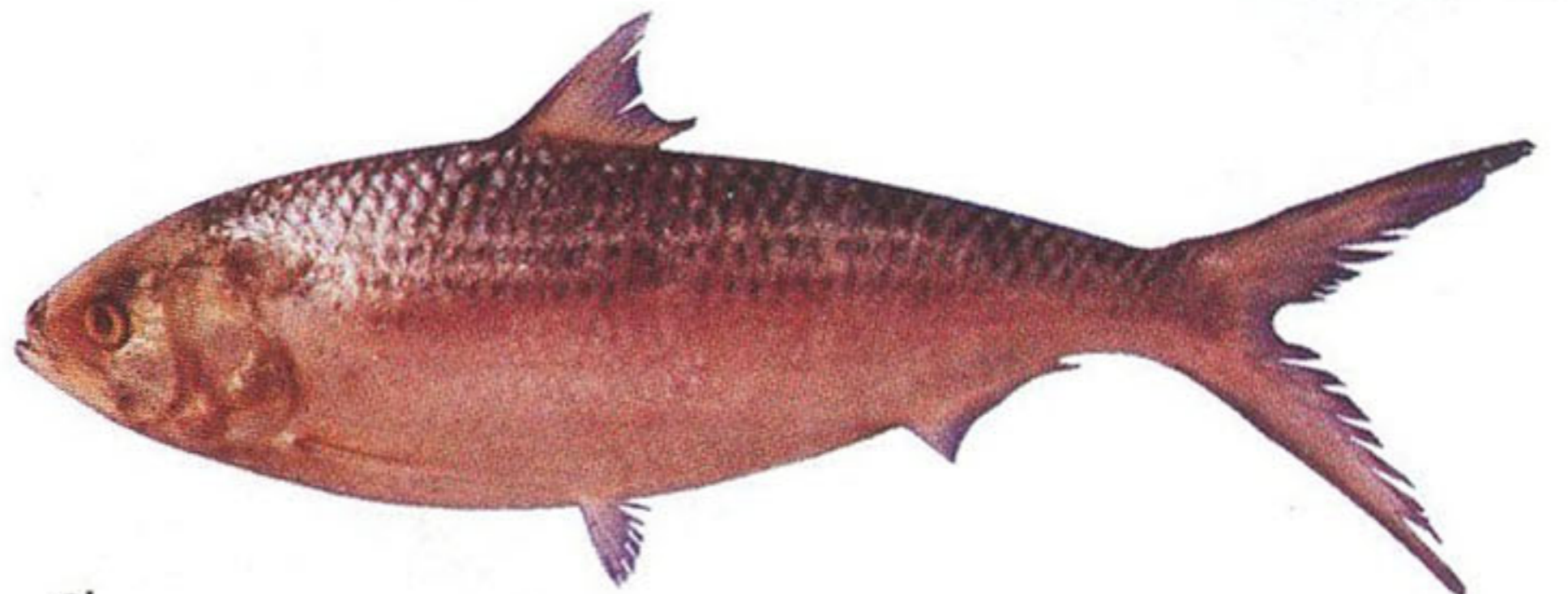
ត្រីគូន *Sardinella gibbosa*
Goldstripe sardinella (Max. 16.5 cm)

អង្ស្យ CLUPEIDAE

♂



ត្រីគូន *Amblygaster leiogaster*
Smoothbelly sardinella (Max. 24.6 cm)



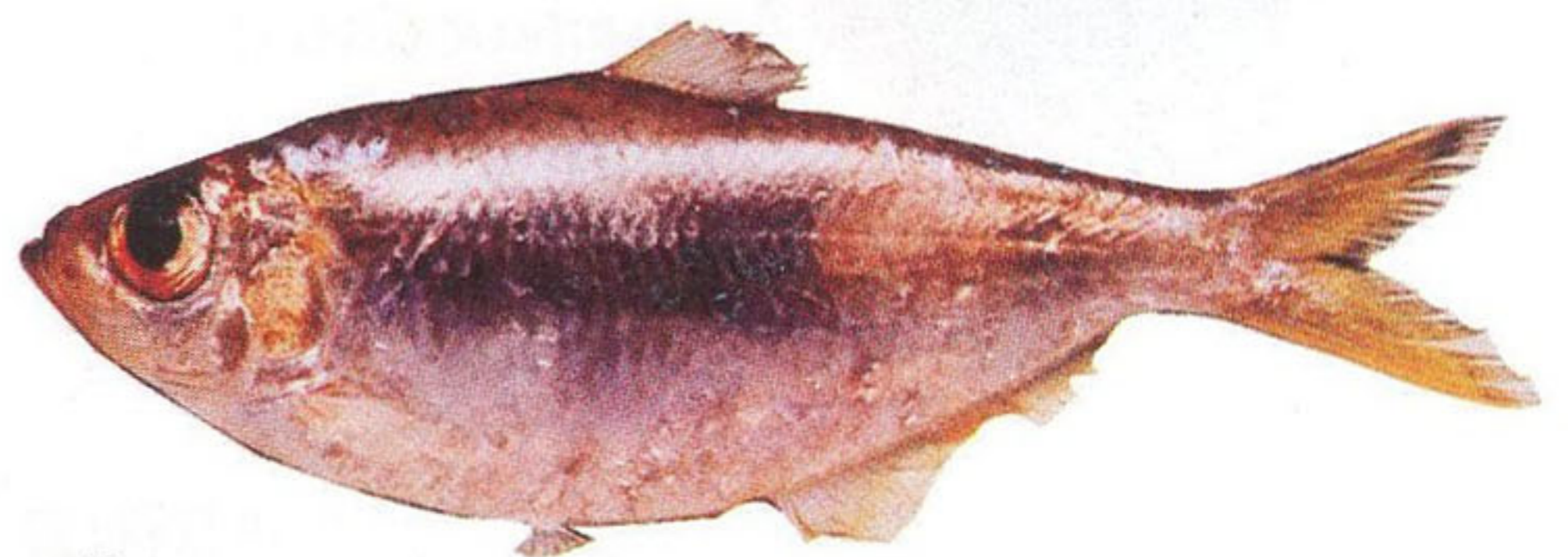
ត្រីកាឡុមពុក *Tenualosa toli*
Toli shad (Max. 44.6 cm)

អង្ស្យ PRISTIGASTERIDAE

♂



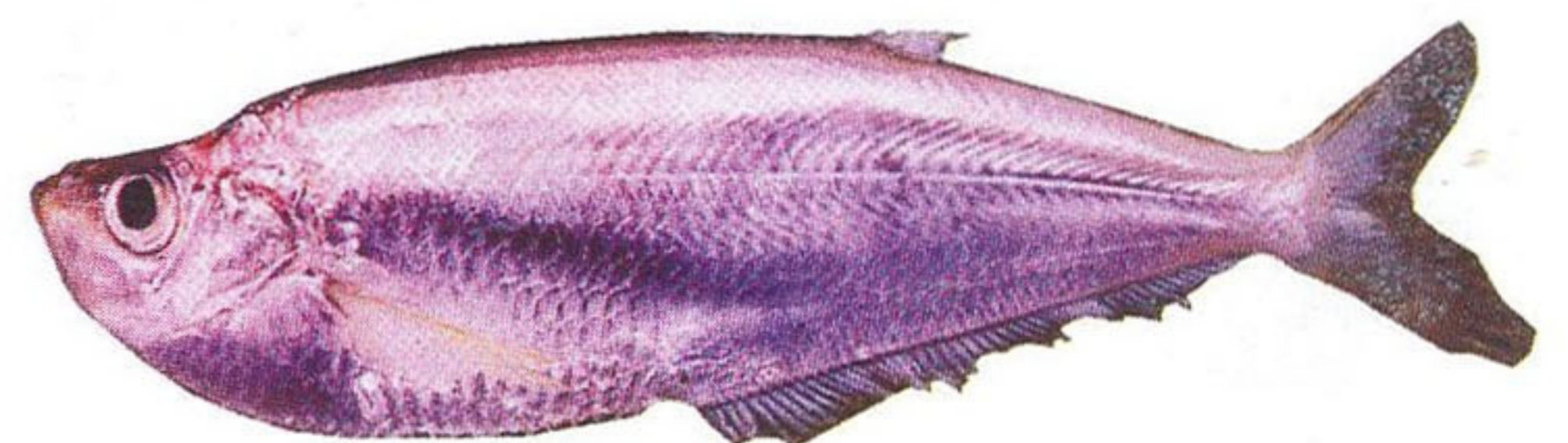
ត្រីគូនចារាំង *Amblygaster sirm*
Spotted sardinella (Max. 13.5 cm)



ត្រីឆែឡាន *Ilisha melastoma*
Indian ilisha (Max. 11.8 cm)



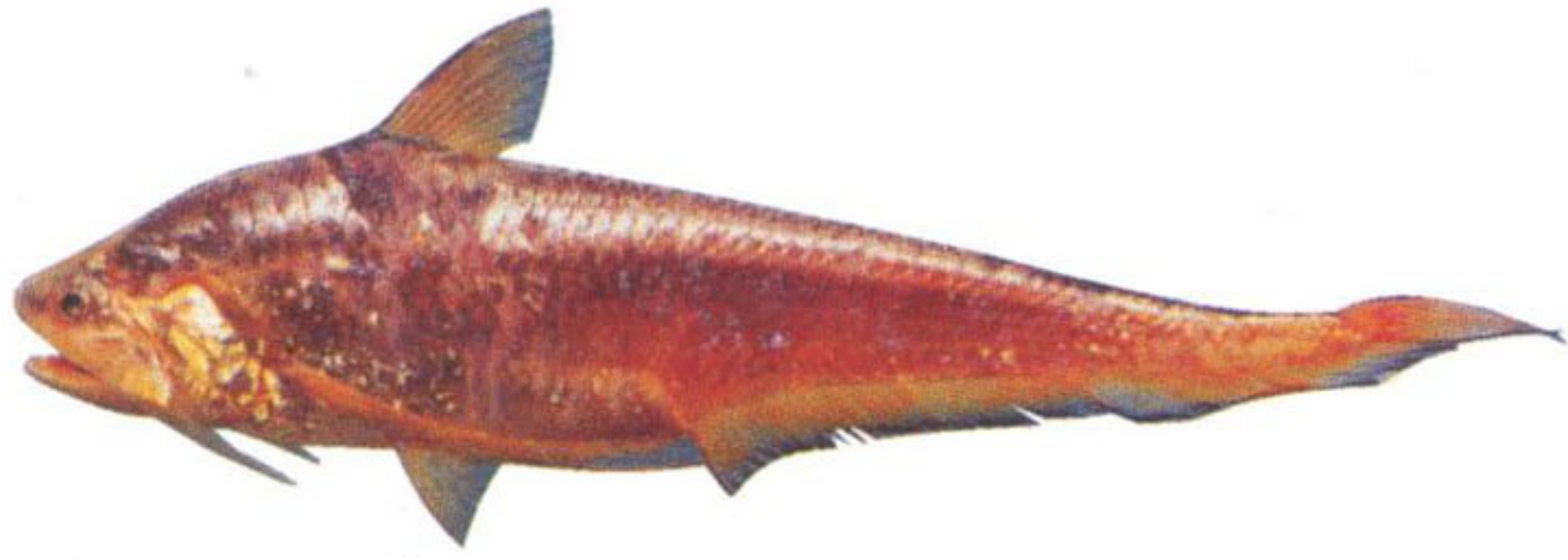
ត្រីកាម៉យ *Anodontostoma chacunda*
Chacunda gizzard shad (Max. 15.5 cm)



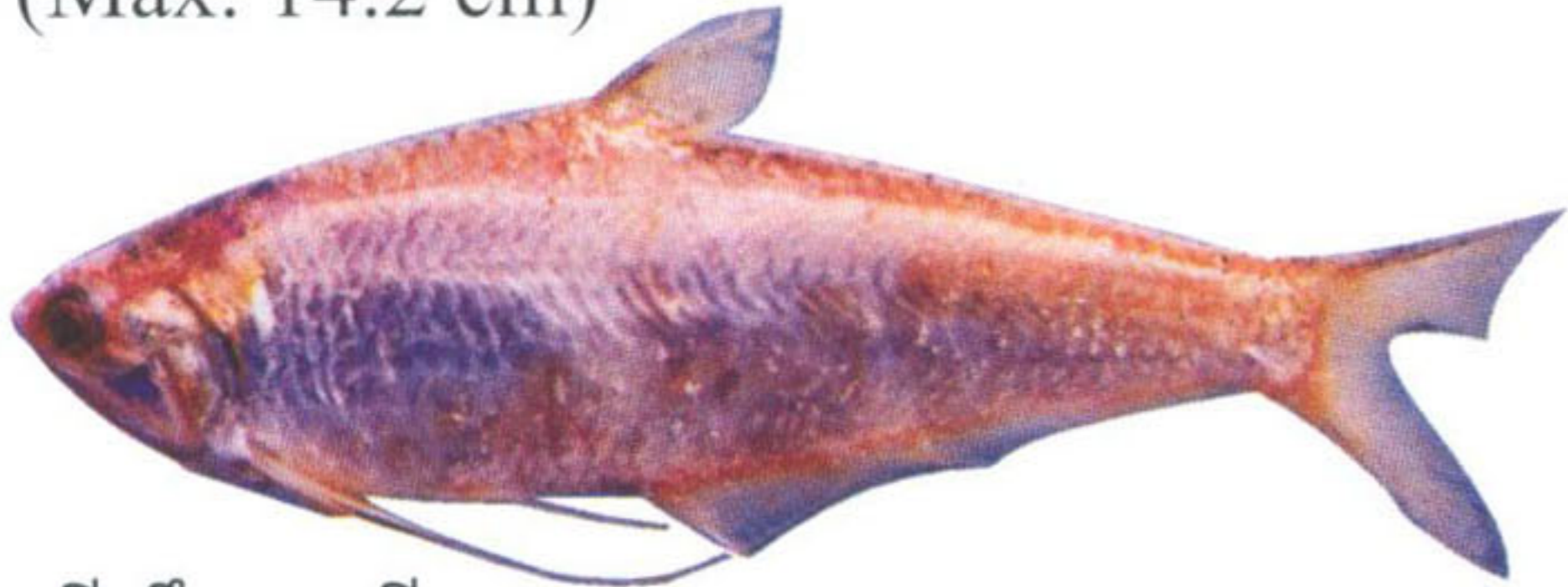
ត្រីឆែឡានងើយ *Opisthopterus tardoore*
Tardoore (Max. 14.8 cm)

អង្ស្យ ENGRAULIDIDAE

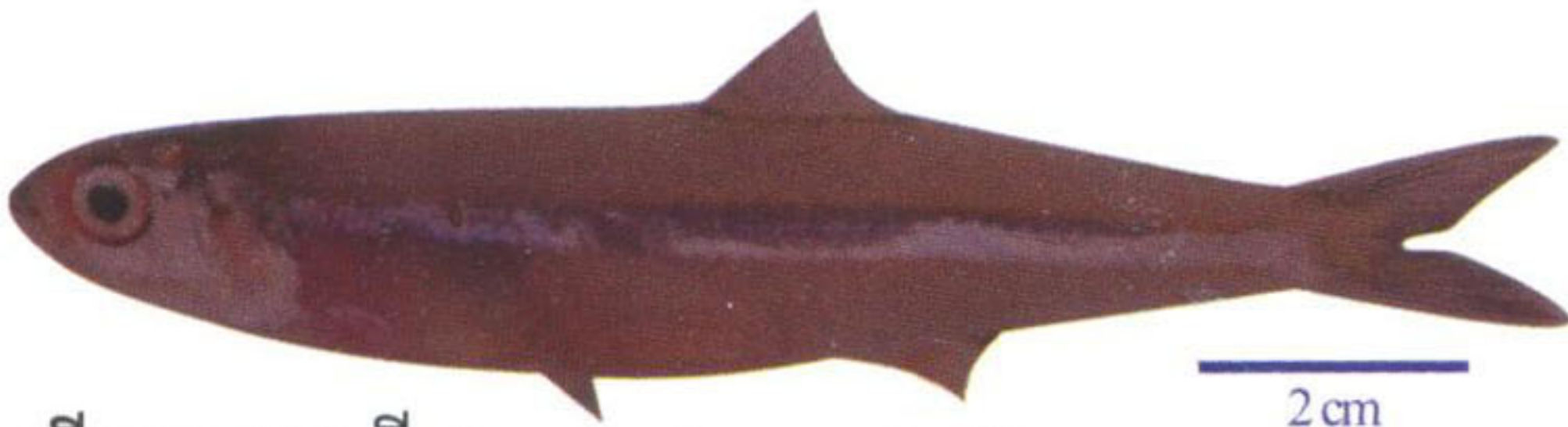
X



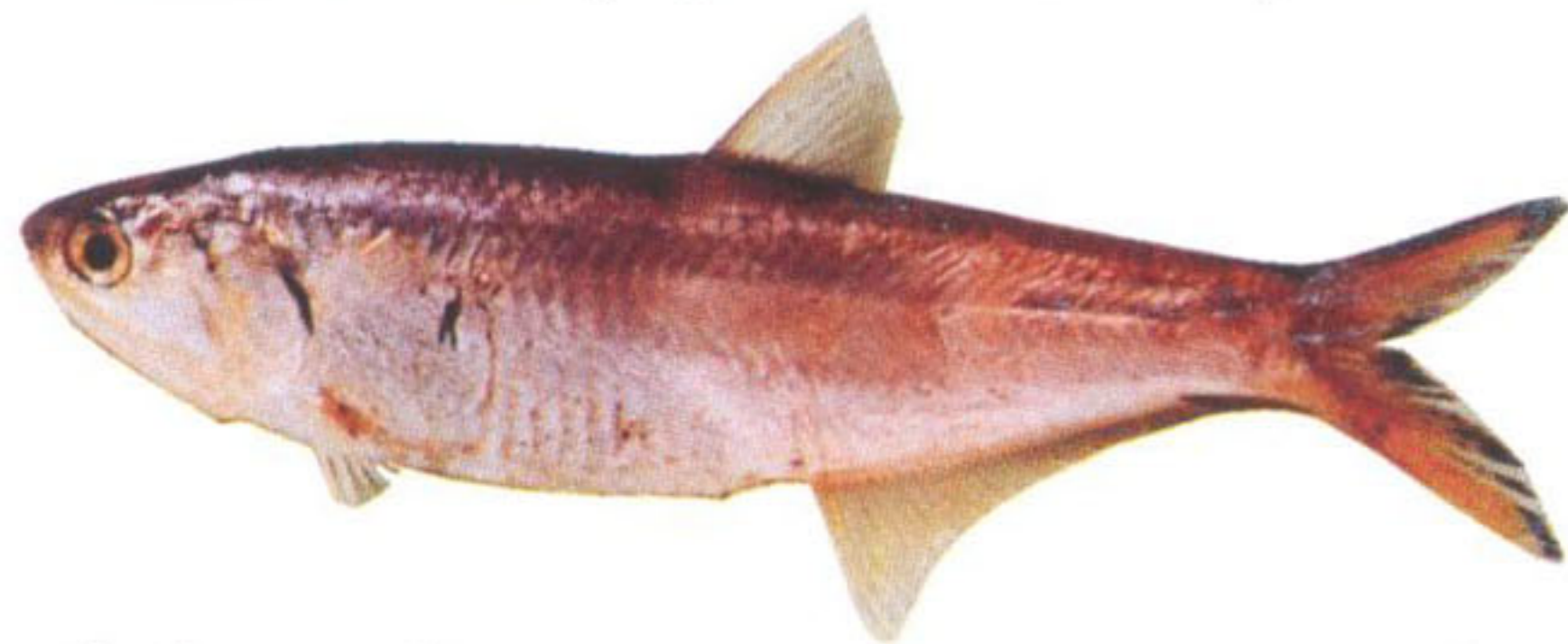
ត្រីជន្លូញមាន់ *Coilia macrognathos*
Longjaw grenadier anchovy
(Max. 14.2 cm)



ត្រីស្លឹកឫស្សី *Setipinna taty*
Scaly hairfin anchovy (Max. 15.8 cm)



ត្រីក្រចកក្របី *Stolephorus indicus*
Indian anchovy (Max. 15.7 cm)



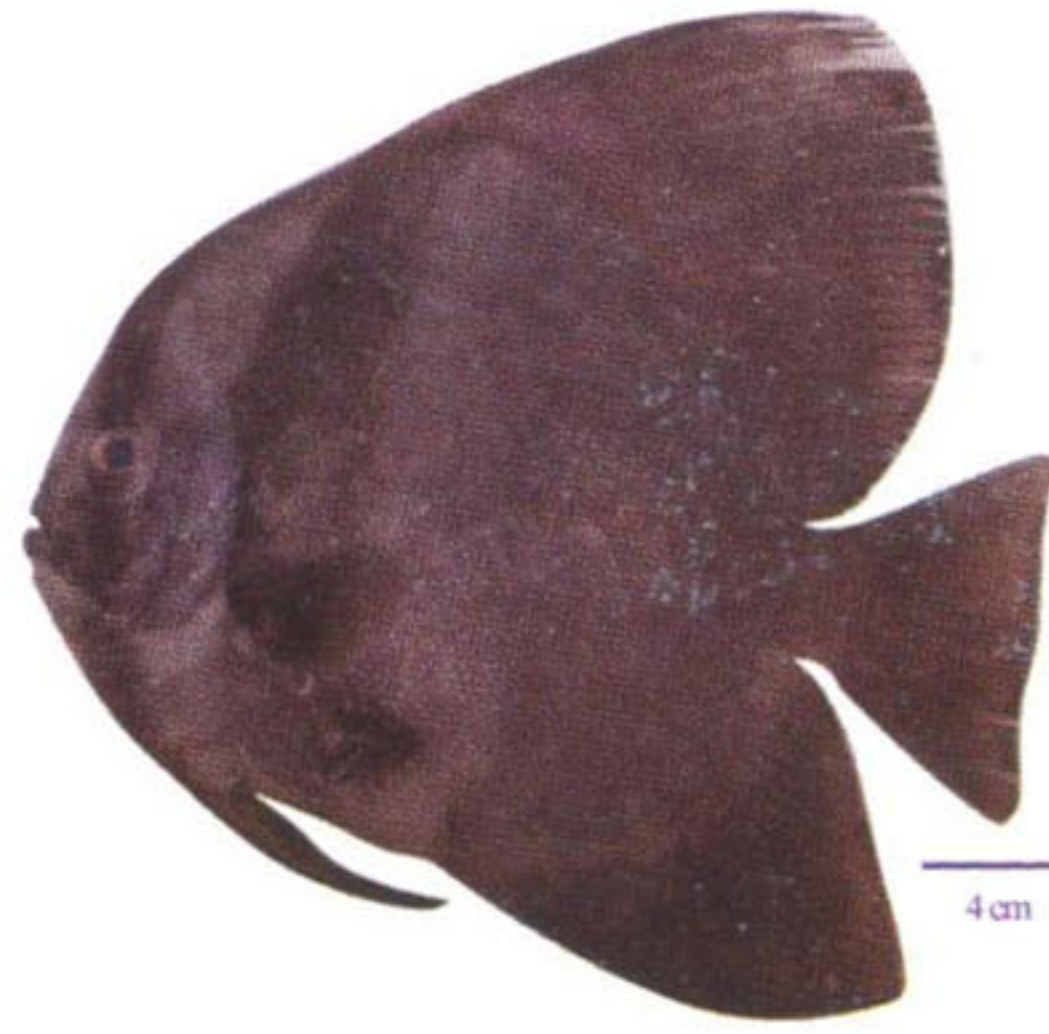
ត្រីស្លឹកឫស្សី *Thryssa hamiltonii*
Hamilton's thryssa (Max. 14.7 cm)

អង្ស្យ EPHIPPIDAE

X



ត្រីយុត ឬ ត្រីចៀកដំរី
Ephippus orbis
Spadefish
(Max. 13.3 cm)



ត្រីចៀកដំរី
Platax teira
Spotbelly batfish
(Max. 52 cm)

អង្ស្យ GERREIDAE

X



ត្រីដូរអង្ករ *Gerres abbreviatus*
Deepbody silverbiddy (Max. 13.3 cm)



ត្រីដូរអង្ករ *Gerres filamentosus*
Whipfin silverbiddy (Max. 13.5 cm)



ត្រីដូរអង្ករ *Gerres oyena*
Common silverbiddy (Max. 19 cm)



ត្រីព្រុយវែង *Pentaprion longimanus*
Longfin silverbiddy (Max. 15 cm)



ត្រីកញ្ចក់ស្លា *Pomadasy argenteus*
Silver grunt (Max. 20.4 cm)



ត្រីក្រឡកខុប *Pomadasy kaakan*
Javelin grunter (Max. 15.5 cm)

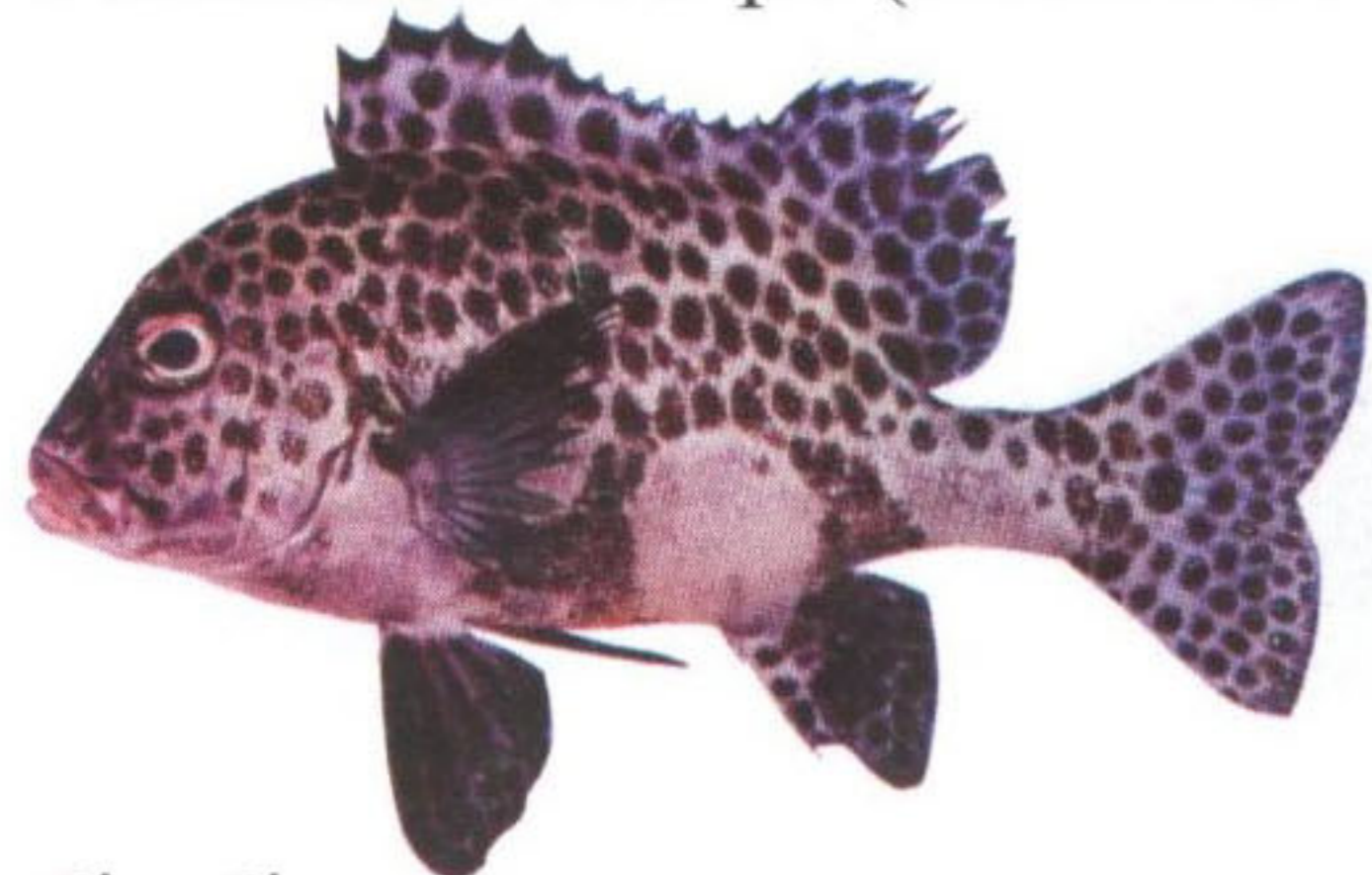


ត្រី ១ *Pomadasy maculatum*
Saddle grunt (Max. 18.3 cm)

អង្ស្យ: HAEMULIDAE ♀



ត្រីកាជី *Diagramma pictum*
Painted sweetlips (Max. 16.7 cm)



ត្រីកាជីអុច *Plectorhinchus chaetodonoides*
Harlequin sweetlips (Max. 26.6 cm)

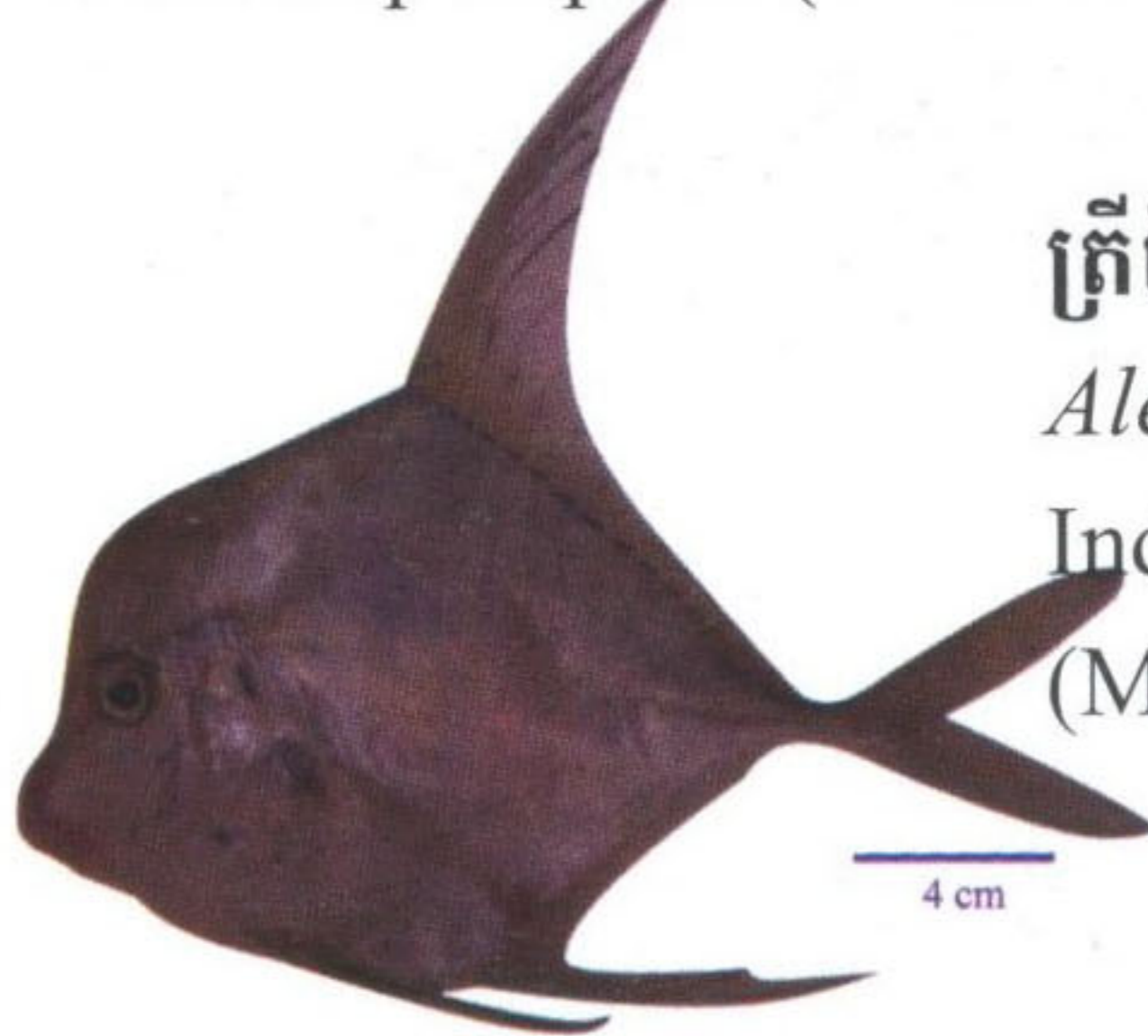


ត្រីបែកឆ្នាំង *Plectorhinchus gibbosus*
Harry hotlips (Max. 27 cm)

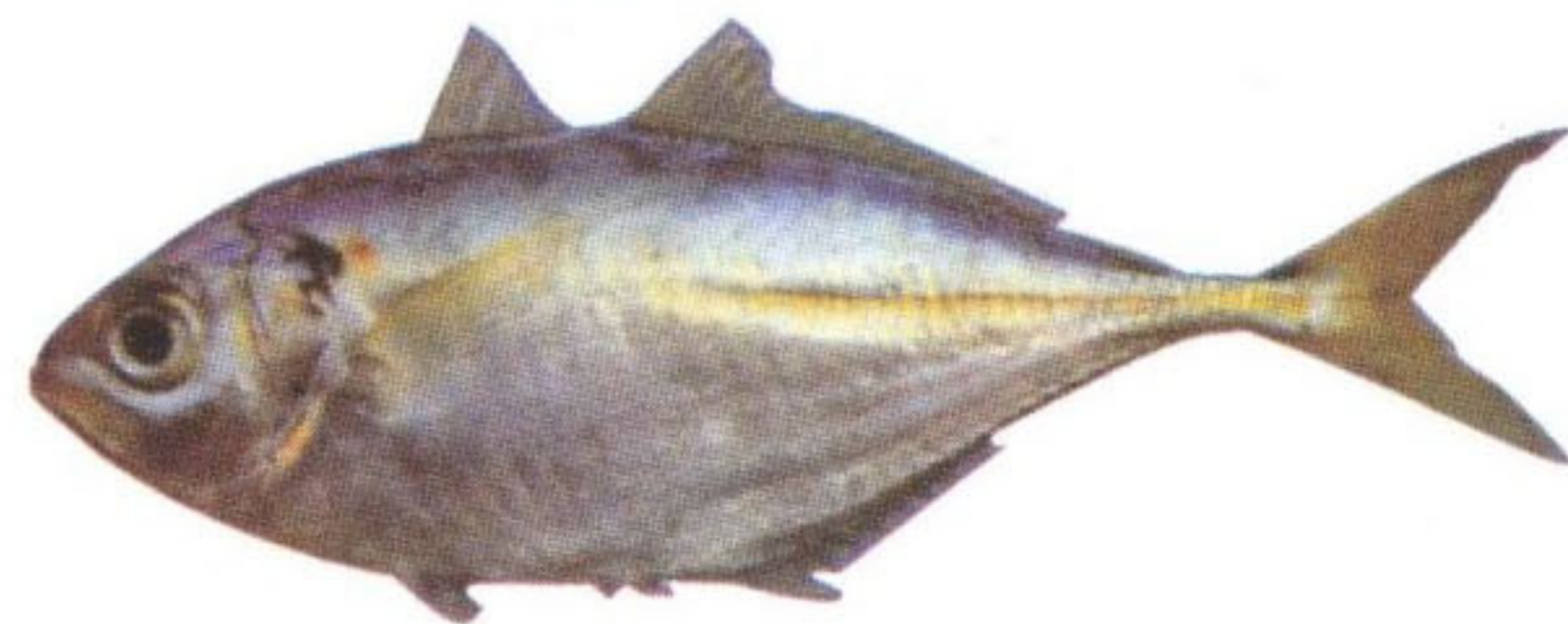
អង្ស្យ: CARANGIDAE ✕



ត្រីចិនចាស់ស *Alectis ciliaris*
African pompano (Max. 71.2 cm)



ត្រីចិនចាស់ខ្មៅ *Alectis indica*
Indian threadfish
(Max. 82.6 cm)



ត្រីកាំតូច *Alepes djedaba*
Shrimp scad (Max. 16 cm)



ត្រីកាំតូចព្រុយខ្មៅ *Alepes melanoptera*
Blackfin scad (Max. 19.1 cm)